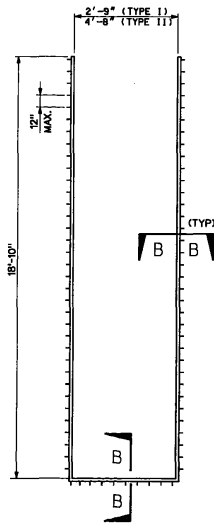
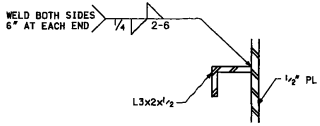


STEEL STOPLOG

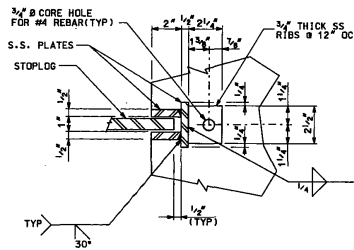


STAINLESS STEEL STOPLOG NOTCH

STEEL STOPLOG AND STAINLESS STEEL STOPLOG NOTCH (TYPE I & II)



SECTION A-A
3'-11'-0"



SECTION B-B (B)
3'-11'-0" (S-16)

NOTES:

1. ALL STAINLESS STEEL SHALL BE TYPE 316L. VARIATION FROM STRAIGHTNESS OF ASSEMBLED NOTCH SHALL NOT EXCEED 1/4".
2. ALL STOPLOGS SHALL BE COATED IN ACCORDANCE WITH SECTION 310-5.8 OF THE AMENDMENTS TO THE STANDARD SPECIFICATIONS FOR PUBLIC WORKS CONSTRUCTION.
3. CONTRACTOR SHALL FIELD VERIFY ALL DIMENSIONS PRIOR TO FABRICATING ALL LOGS AND NOTCHES.
4. THE STOPLOGS SHALL BE MARKED AT THE TOP AND MIDDLE OF BOTH SIDES WITH STEEL RAISED WELD BEADS TO DESIGNATE THE LOCATION AND POSITION AS DIRECTED BY THE ENGINEER. THE SCREENING STRUCTURE STOPLOGS SHALL BE MARKED AS FOLLOWS: TYPE 2 STOPLOG - "SC-T2" AND TYPE 3 STOPLOG - "SC-T3".
5. THE STOPLOGS SHALL BE INSERTED INTO THE STOPLOG NOTCHES WITH THE SMOOTH SIDE OF THE STOPLOG AGAINST THE WATER.



8/30/07

WARNING 1" IF THIS LINE IS NOT 1" LONG THEN DWG IS NOT TO SCALE.

COUNTY SANITATION DISTRICT NO. 14 OF LOS ANGELES COUNTY, CALIFORNIA DESIGNED: R. LUGERO DRAWN: J. RODRIGUEZ CHECKED: J. L. [Signature] REVIEWED: C. [Signature]	AUG 2007 AUG 2007 AUG 2007 AUG 2007	INITIALS DATE REVISIONS NO.
	REVISIONS NO.	INITIALS DATE
	REVISIONS NO.	INITIALS DATE