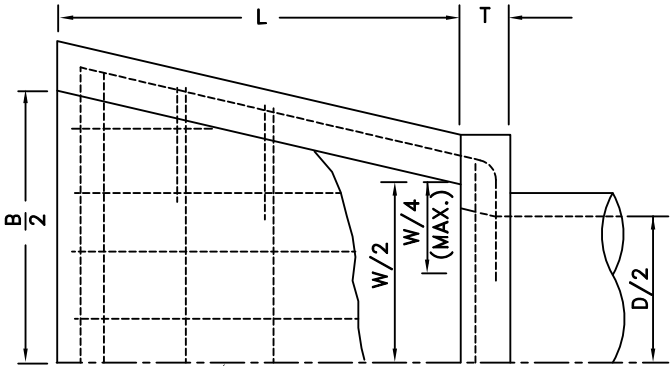
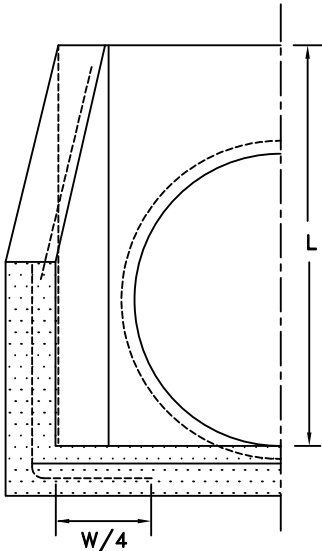
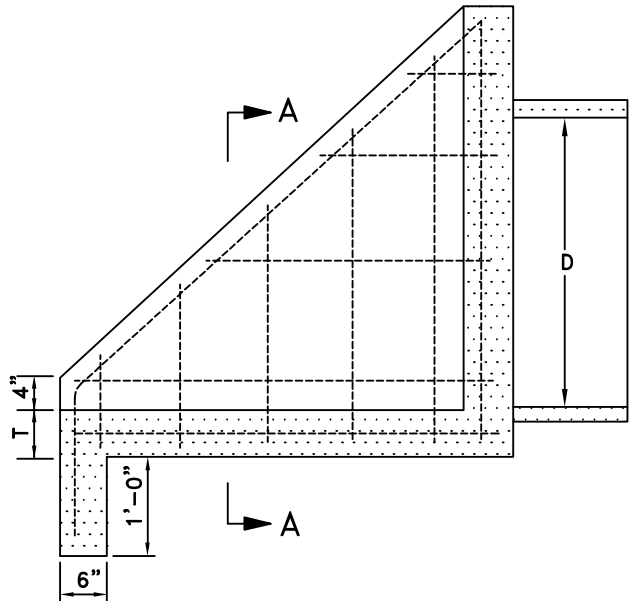


DIMENSIONS & REINFORCING

D	W	B	L	T	ALL REINFORCING
33"	3'- 5"	5'- 3"	4'- 0"	6"	# 5 @ 12"
36"	3'- 8"	5'- 8"	4'- 2"	6"	# 5 @ 12"
42"	4'- 4"	6'- 4"	4'- 8"	6"	# 5 @ 12"
48"	4'-10"	7'- 2"	5'- 2"	8"	# 6 @ 12"
54"	5'- 4"	8'- 0"	6'- 0"	8"	# 6 @ 12"
60"	6'- 0"	8'-10"	6'- 6"	8"	# 6 @ 12"



SYMMETRICAL ABOUT C/L



HALF SECTION A-A

NOTES:

1. "B" MAY BE REDUCED IF REQUIRED BY CHANNEL DIMENSIONS
2. REINFORCING BAR SPACING SHOWN IS MAXIMUM SPACING.
3. USE CLASS 'A' CONCRETE, 6 SACK.
4. SEE CST, DR-13 FOR TRASH RACK

ROB JENSEN
DIRECTOR OF PUBLIC WORKS/CITY ENGINEER



DEPARTMENT OF PUBLIC WORKS

PIPE INLET STRUCTURE

SCALE: NONE
REVISED: MARCH 2007
DRAWN BY: STAFF
APPROVED BY: R JENSEN

DR-13