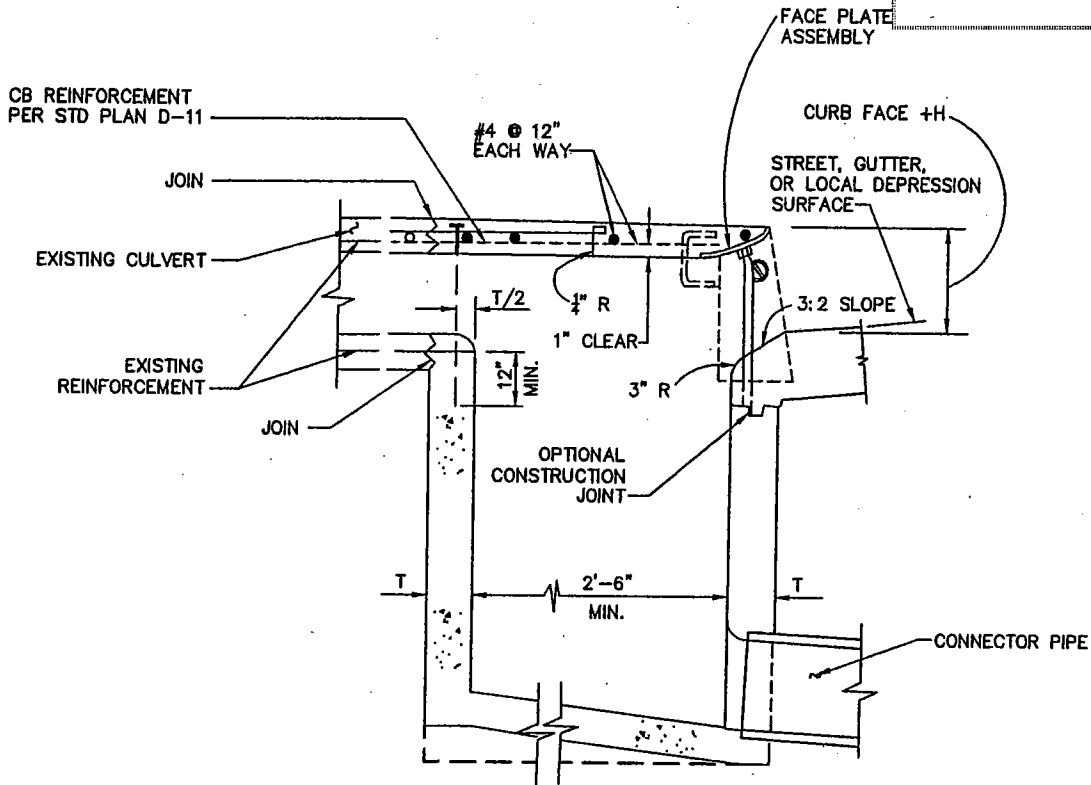


DRAFT



SECTION

CASE 3

**CATCH BASIN MODIFICATION
WITH REAR CULVERT ENTRANCE**

NOTES:

1. CONCRETE SHALL BE CLASS 560-C-3250 WITH A MAXIMUM SLUMP OF 5", FC'=3250 P.S.I. COMPRESSIVE STRENGTH AT 28 DAYS, UNLESS OTHERWISE NOTED ON THE CONTRACT PLANS, REINFORCING STEEL IF REQUIRED SHALL BE DEFORMED REBARS WITH Fy EXCEEDING 60,000 PSI, ASTM A615 AND ASTM A706, GRADE 60. PLACING OF REINFORCEMENT AND SPLICING LENGTHS SHALL CONFORM TO ACI CODES 318-13.
2. THE FOLLOWING STANDARD PLANS ARE INCORPORATED HEREIN:
 - D-10 MONOLITHIC CATCH BASIN CONNECTION
 - D-11 CATCH BASIN REINFORCEMENT
 - D-12 CATCH BASIN FACE PLATE ASSEMBLY AND PROTECTION BAR
 - D-14 CATCH BASIN MANHOLE FRAME AND COVER
 - D-16 STEEL STEP

THE PORT OF LONG BEACH ENGINEERING DIVISION

REVISIONS		MODIFICATIONS FOR CURB OPENING CATCH BASINS	STANDARD PLAN
NO.	DATE		D-9
△			
△			
△			
APPROVED BY: _____		R.E. NO.: _____	DATE: _____
CHIEF HARBOR ENGINEER			3 OF 3