

REVISIONS

APPROVALS

DESCRIPTIONS

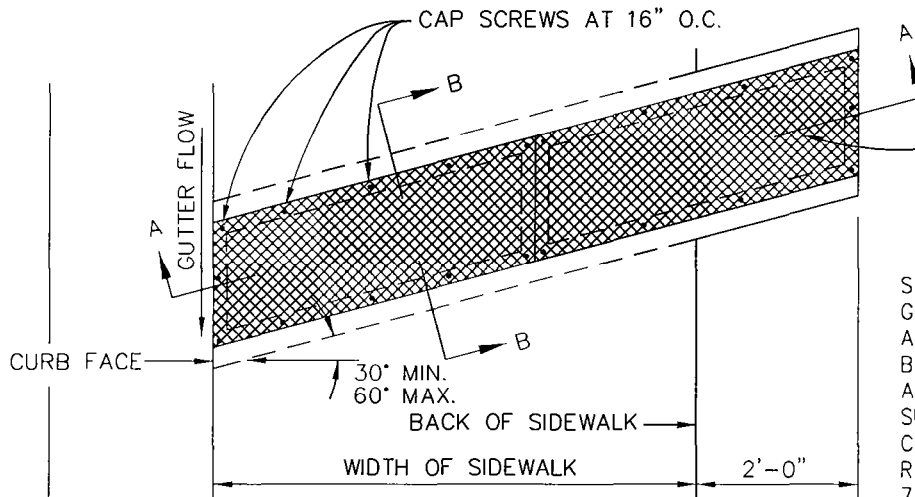
BY

DATE

APPROVED

COUNCIL RESOLUTION NO. 26-92

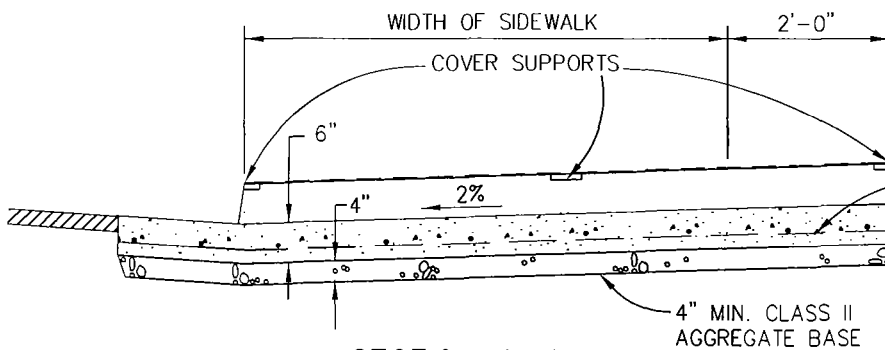
3/10/92



PLAN

"DIAMOND PLATE" STEEL PLATE, 1/4" THICK, TWO EQUAL LENGTH PLATES.

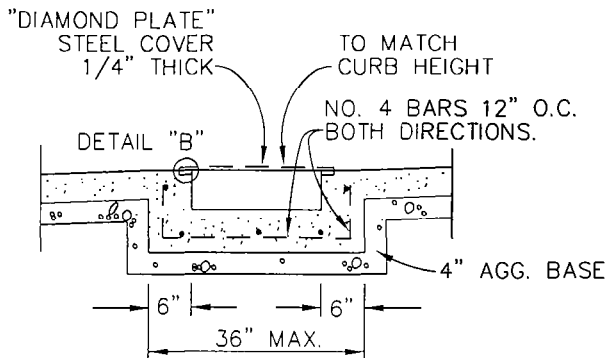
STEEL PLATES SHALL BE GALVANIZED. ALL CORNERS AND SHARP EDGES SHALL BE GROUND SMOOTH. ALL ABRADED AND DAMAGED SURFACES SHALL BE COATED WITH A ZINC-RICH PAINT, AS PER 75-1.05 OF THE STATE STANDARD SPECIFICATIONS.



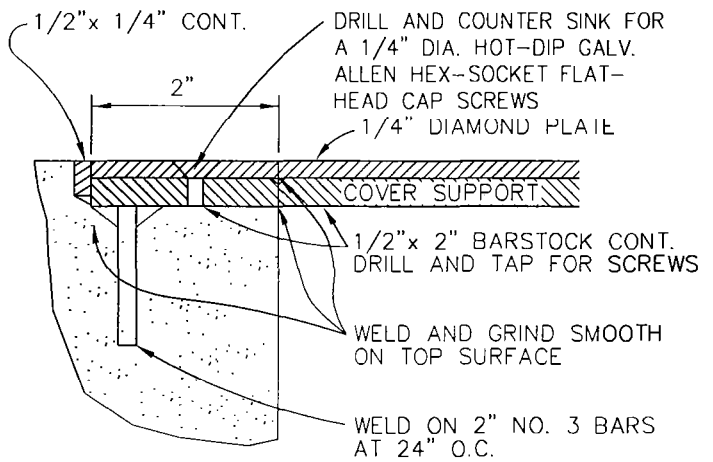
SECTION A-A

P.C.C. FLOOR WITH NO. 4 BARS BOTH DIRECTIONS, 12" O.C.

4" MIN. CLASS II AGGREGATE BASE



SECTION B-B



DETAIL "B"

DRAWN BY:
C.A.C.
DESIGNED BY:
S.J.S.
DATE:
2/27/92
FILE NAME:
AT510.DWG

CITY OF ATASCADERO
ENGINEERING DEPARTMENT

DRAWING NO.

SIDEWALK UNDERDRAIN,
STEEL COVERED

510