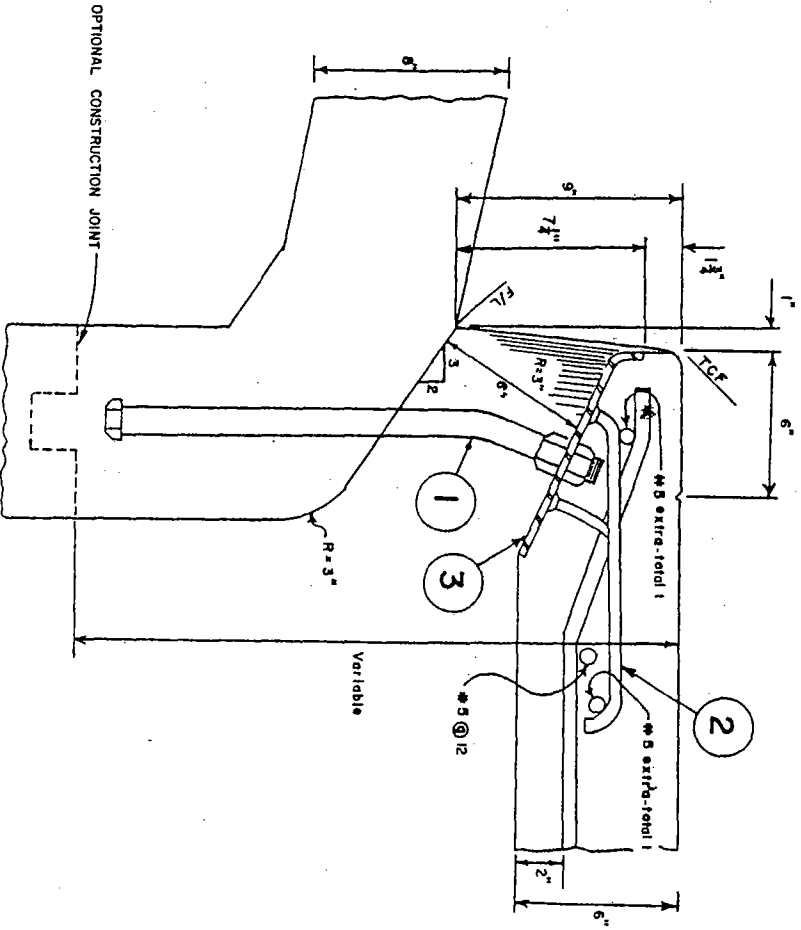


NOTES

1. CURB SUPPORT BOLT SHALL BE INSTALLED WHEN THE LENGTH OF THE CURB OPENING EXCEEDS 4'. THE BOLTS SHALL BE SPACED EVENLY AT INTERVALS NOT EXCEEDING 3'-6" CENTER TO CENTER.
2. THE 1/2" STEEL ANCHORS SHALL BE INSTALLED AT EVEN INTERVALS, NOT TO EXCEED 3'-6".
3. WHEN REQUIRED BY THE LENGTH OF THE OPENING, THE CURB SUPPORT PLATE MAY BE DELIVERED IN SECTIONS AND BUTT WELDED IN PLACE. ALL FIELD WELDS, AFTER CLEANING, SHALL BE PAINTED WITH 2 COATS OF ZINC RICH PRIMER, ORGANIC VEHICLE TYPE.
4. ALL EXPOSED METAL PARTS SHALL BE GALVANIZED AFTER FABRICATION.
5. ADJUSTING NUTS SHALL BE TIGHTENED AND SECURED IN PLACE WHEN THE CURB SUPPORT PLATE IS IN POSITION.
6. THE CURB SUPPORT PLATE SHALL BE EMBEDDED 3" INTO THE SIDEWALLS.
7. CURB SUPPORT PLATE MUST CONFORM WITHIN 1/2" OF THE SPECIFIED CURB RADIUS AT ALL POINTS.



COUNTY OF SANTA BARBARA, CA. - DEPARTMENT OF PUBLIC WORKS - ROADS DIV.

Approved by

2-030

CURB SUPPORT PLATE

Charles Wagner
DIRECTOR OF PUBLIC WORK
DATE 4/1/87