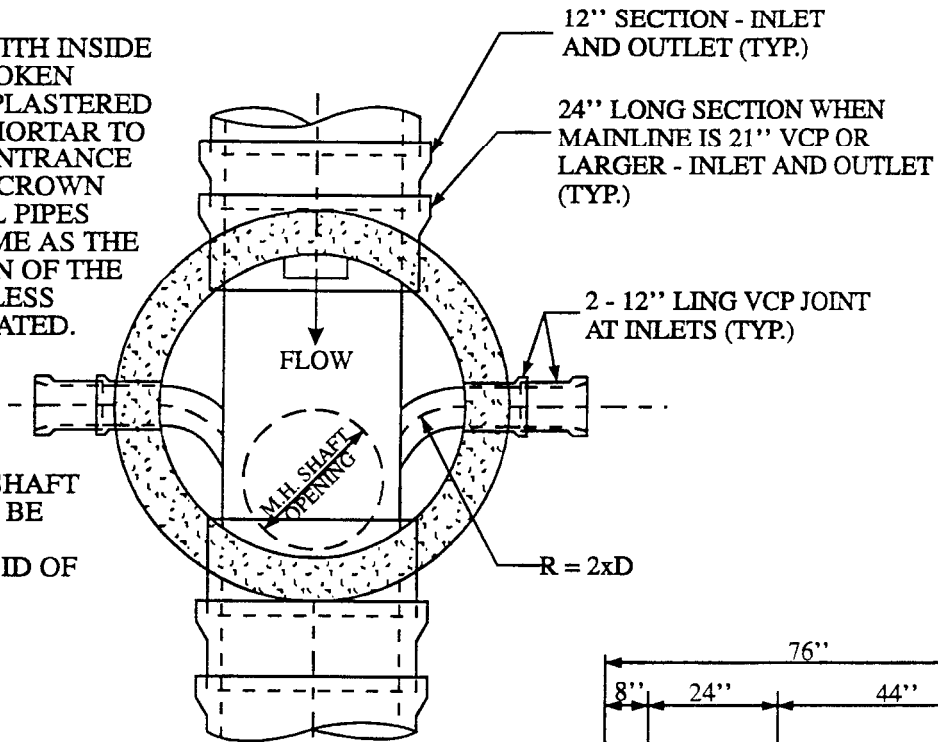
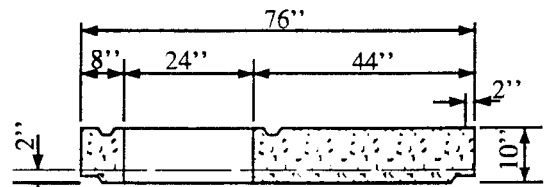


CUT PIPE FLUSH WITH INSIDE OF MANHOLE. BROKEN EDGES SHALL BE PLASTERED WITH A CEMENT MORTAR TO GIVE A SMOOTH ENTRANCE TO THE PIPE. THE CROWN ELEVATION OF ALL PIPES SHALL BE THE SAME AS THE CROWN ELEVATION OF THE LARGEST PIPE UNLESS OTHERWISE INDICATED.

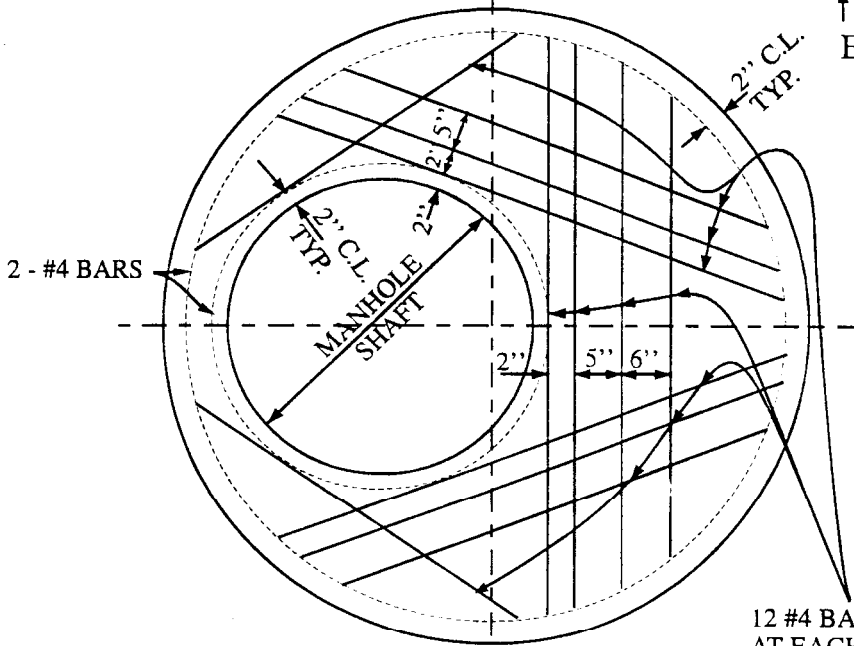
THE MANHOLE SHAFT OPENING SHALL BE PLACED ON THE DOWNSTREAM SID OF THE MANHOLE.



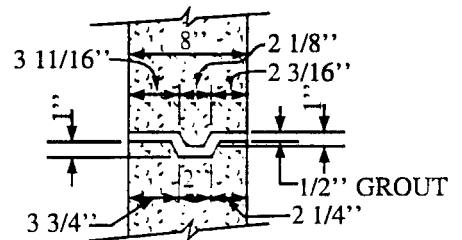
PLAN



ECCENTRIC FLAT TOP DETAIL



ECCENTRIC FLAT TOP



JOINT DETAIL

12 #4 BARS HOOKED AT EACH END

City of San Juan Capistrano



REVISIONS

60" MANHOLE

STANDARD PLAN NO.

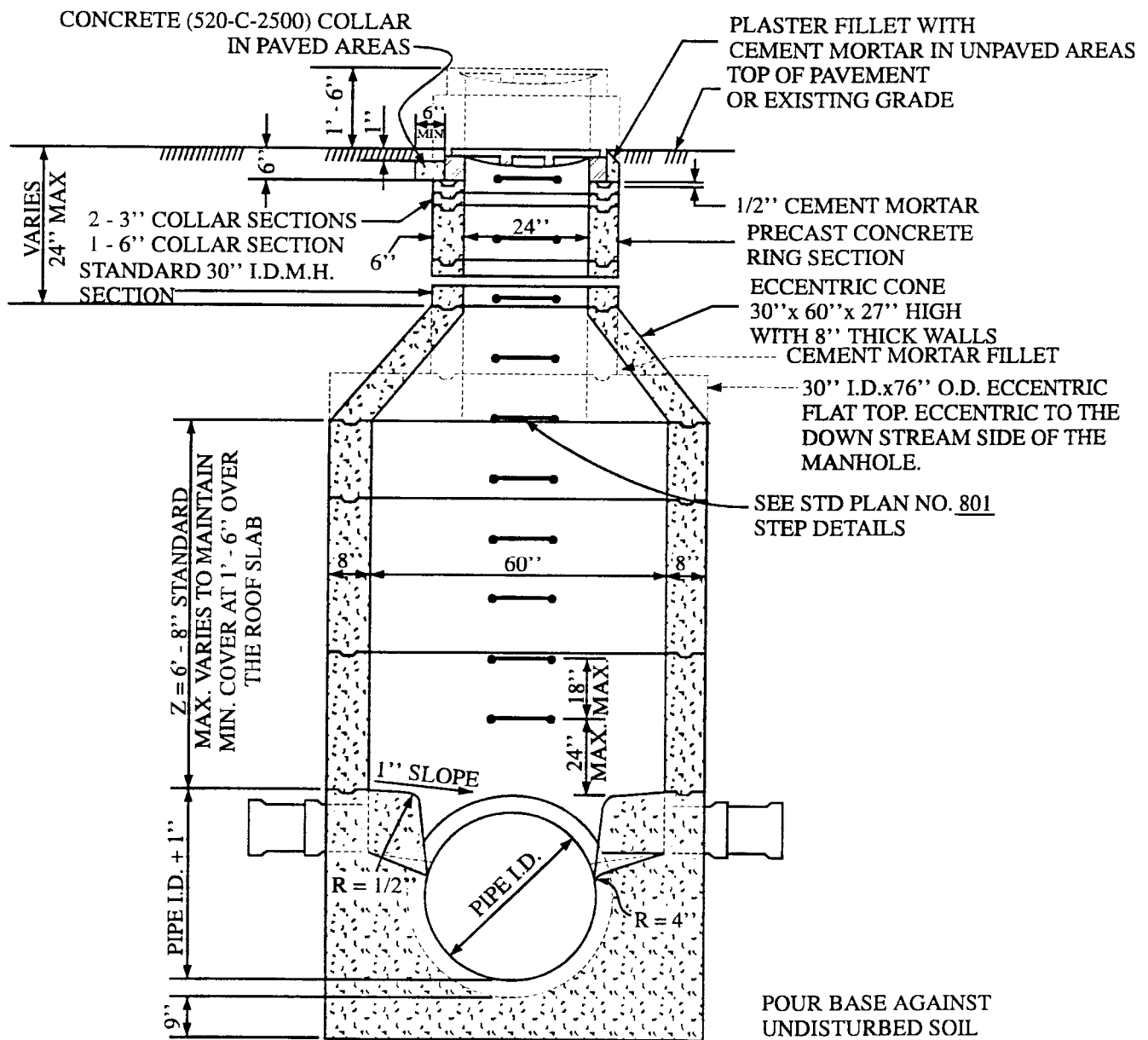
802

William M. Huber

7/20/95

APPROVED BY CITY ENGINEER, WILLIAM M. HUBER R.C.E. 31785 DATE

SHT 1 OF 2

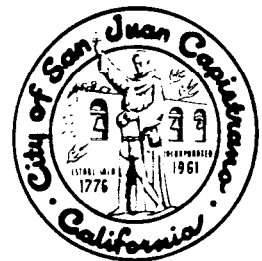


NOTES:

ELEVATION

1. THE STANDARD 60 INCH MANHOLE SHALL BE USED ON SEWERS 24" IN DIAMETER AND LARGER, OTHER SPECIAL CASES, OR WHEN Z IS 12' OR GREATER.
2. SEE STD. PLAN NO. 807 FOR FRAME AND COVER DETAILS.
3. MANHOLES IN UNPAVED AREAS ADJACENT TO TRAVELLED WAYS SHALL BE PROTECTED BY METAL POSTS SET IN CONCRETE TO THE CITY'S SATISFACTION.
4. MANHOLES IN UNPAVED AREAS SHALL HAVE FRAME AND COVER 1'6" ABOVE EXISTING GRADE.

City of San Juan Capistrano



REVISIONS

60" MANHOLE

STANDARD PLAN NO.

802

William M. Huber

7/20/95

APPROVED BY CITY ENGINEER, WILLIAM M. HUBER R.C.E. 31785 DATE

SHT 2 OF 2