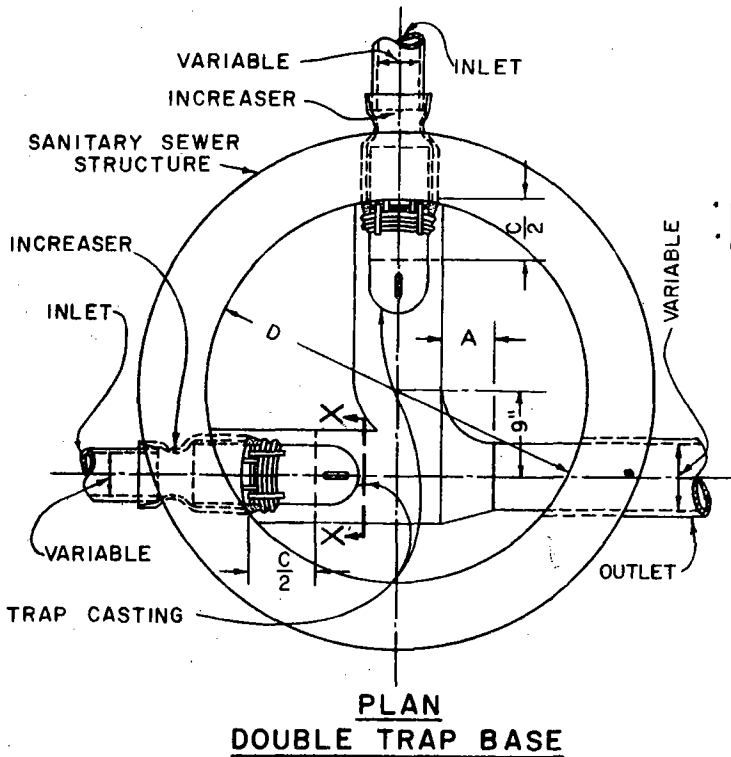
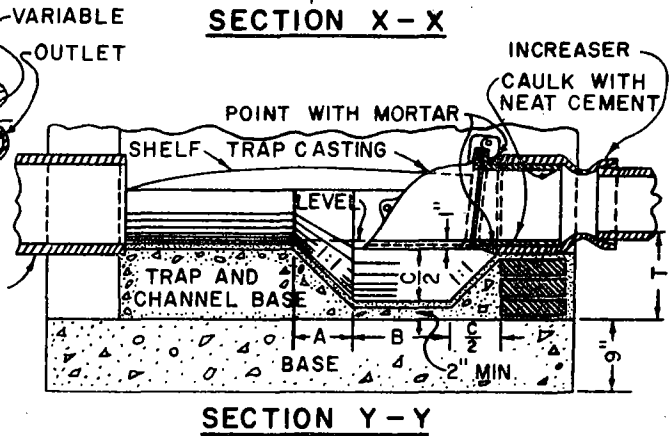
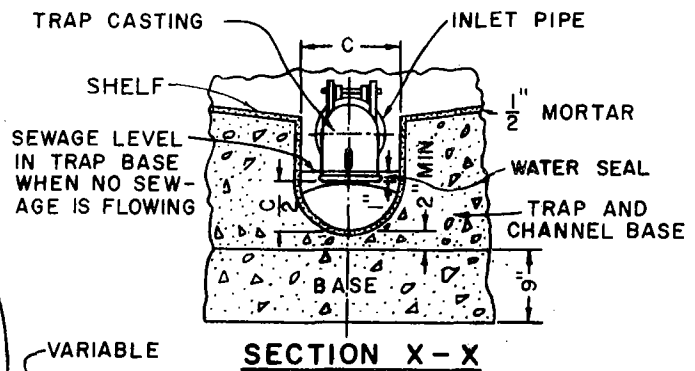
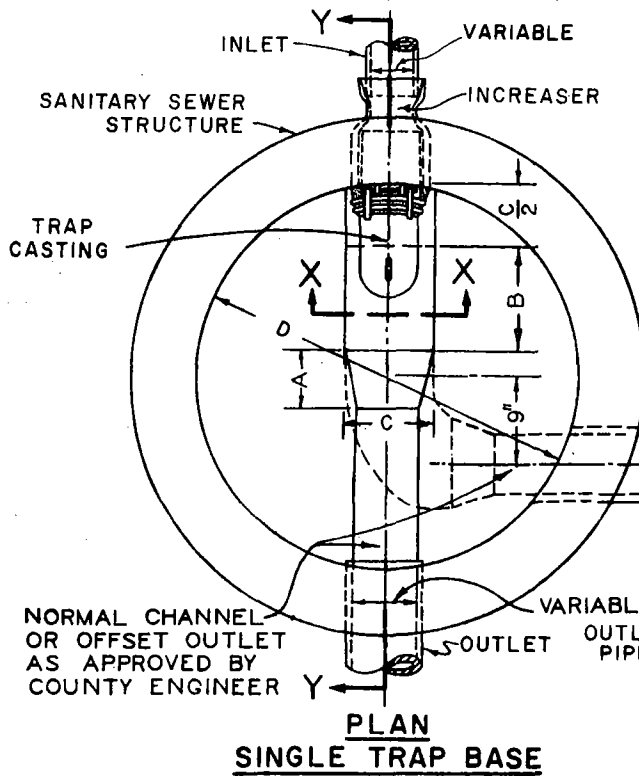


# TRAP MANHOLE BASE

## FOR TRAP CASTING S-18



### TRAP BASES

INLET DIAM.	INLET INCREASER	TRAP SIZE	TRAP PER	DIAM. OF MANHOLE BASE (D)		
				OUTLET DIAMETER		
				8"	10"	12"
8"	8" X 10"	10"	S-18	4'	4'	4'
10"	10" X 12"	12"	S-18		4'	4'
12"	12" X 15"	15"		SEE S-11		

(FOR 15" INLETS AND LARGER SEE S-11; NO INCREASER REQUIRED)

### BASE DIMENSIONS

TRAP DIAM.	A	B	C	A+B+C/2	T MIN.
10"	7 1/2"	14 1/2"	13"	28 1/2"	9"
12"	8 1/2"	16 1/2"	15"	32 1/2"	10"
15"	SEE S-11				

### NOTES

- WHERE A TRAP IS NECESSARY IN AN EXISTING STRUCTURE, BREAK OUT CONCRETE AND CONSTRUCT NEW BASE.
- FOR OTHER MANHOLE DETAILS, SEE PLAN NO. S-3 OR S-36.
- ALL CEMENT MORTAR SHOWN HEREON SHALL BE CLASS "D" PER SECTION 201-5.1.
- WATER SEAL SHALL BE 1" MINIMUM.

DEPARTMENT OF COUNTY ENGINEER-COUNTY OF LOS ANGELES  
SANITATION DIVISION

*Richard E. Kelso*  
DIVISION ENGINEER

APPROVED

*John G. Lanier*  
COUNTY ENGINEER

COUNTY ENGINEER  
STANDARD

**S-10**

DATE: OCTOBER 1964

REVISED TO: 3-70, 9-70