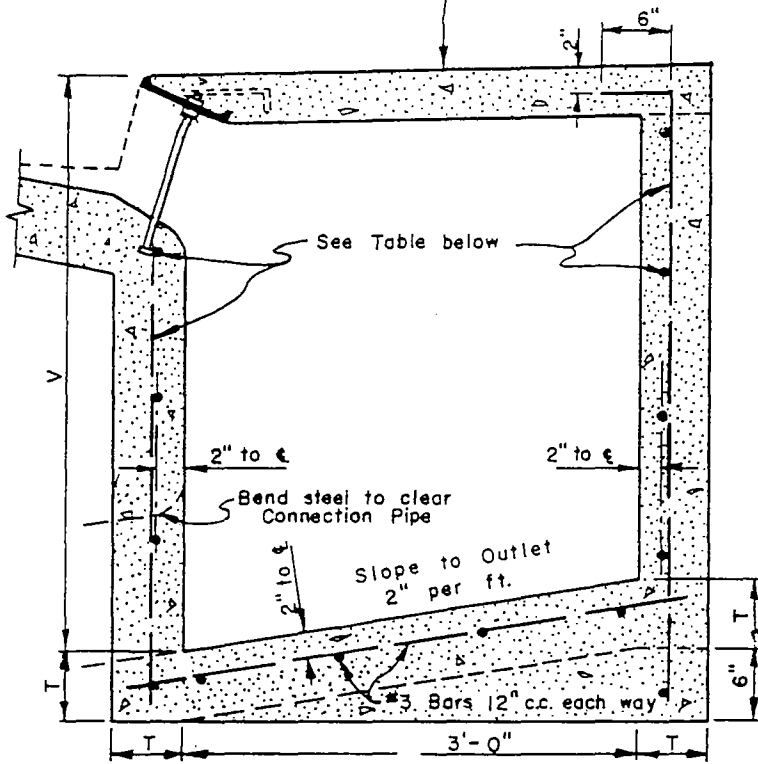
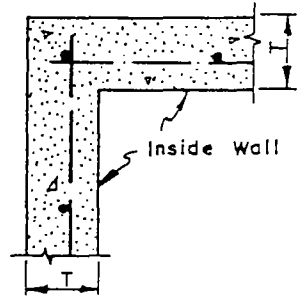




For deck reinforcement see Sheet 1.



TYPICAL SECTION



SECTION B-B

V OF CB.	T	WALL RE-INFORCING (each way)
4' or less	6"	#3 at 12"
4' to 8'	8"	#4 at 12"
8' or more	10"	#5 at 12"

WALL DIMENSIONS & REINFORCEMENT

CITY OF COLTON PUBLIC WORKS DEPT.		
STANDARD CURB INLET CATCH BASIN		
DRAWN BY G.W.A.	SCALE N.T.S.	DRAWING NO.  200
CHK'D <i>DWB</i>	DATE OCT. 1963	
APP'D <i>G. H. Hamilton</i>		