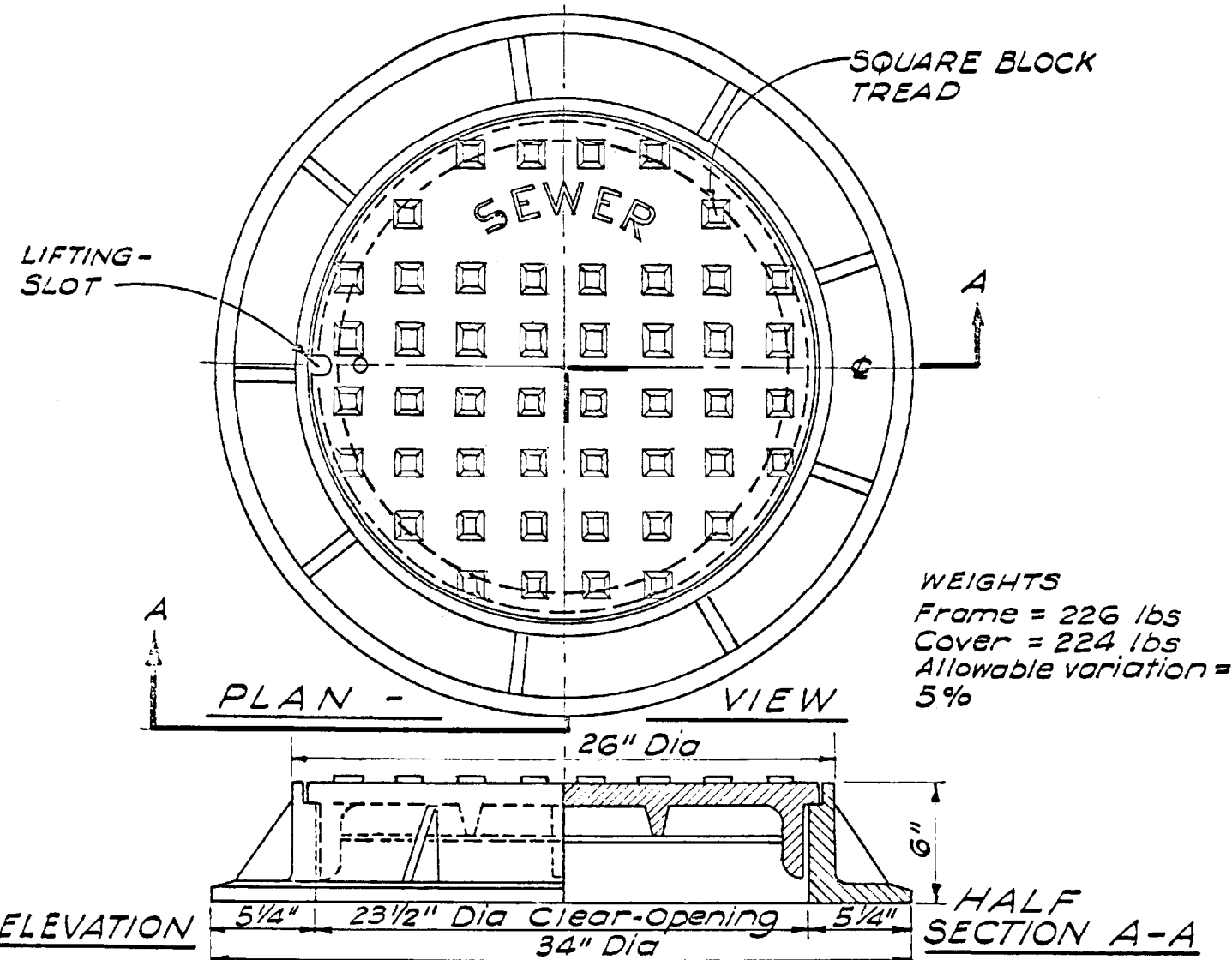


SUPERSEDED BY S-175 DATED: 4-23-47  
 REV: 12-1-69  
 SIMILAR TO EXCEPT AS INDICATED  
 ORANGE CO NO. 510  
 STATE OF CALIF.



- UNLESS OTHERWISE SPECIFIED ON PLANS AND SPECIFICATIONS:**
1. All manhole frames and covers shall be set to finish grade.
  2. Where pavement is involved; the improvement will not be accepted until finish pavement is in place and final inspection is made.
  3. See STD 512, for parkway frame and cover.
  4. Specify cover lettering, if other than SEWER.

APPROVED SOURCE			
TRAFFIC - Regular Size (Pictured)			
NOM DIA	NUMBER	NAME	ADDRESS
24"	A-1270	Alhambra Foundry Co., Ltd	1147 Meridian Ave, Alhambra
24"	M-1270	E B Moritz Foundry	627 E Washington Ave, Santa Ana
24"	X-108	Long Beach Iron Works, Inc.	2100 W. Anaheim, Long Beach
TRAFFIC - Large Size (Not Pictured)			
36"	A-1251	Alhambra Foundry Co., Ltd	1147 Meridian Ave, Alhambra
36"	M-3644	E B Moritz Foundry	627 E Washington Ave, Santa Ana
36"	X-106A	Long Beach Iron Works, Inc.	2100 W. Anaheim, Long Beach
clear opening	overall Base	Frame Height	WEIGHT ± 5%
36"	44"	6"	Cover 370 Frame 290 Total 660

CITY OF BREA

*Sedney L. Lowry* CITY ENGINEER

STANDARD

**MANHOLE FRAME & COVER - TRAFFIC**

**408**