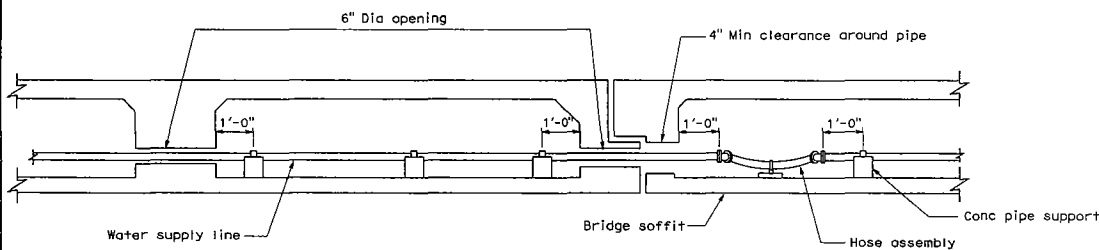
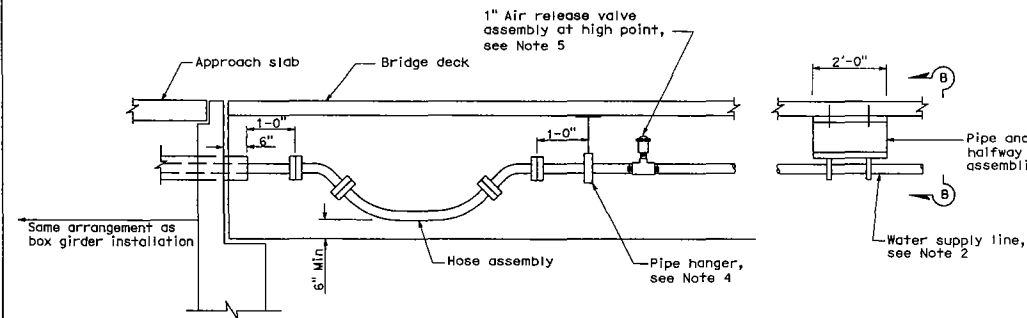


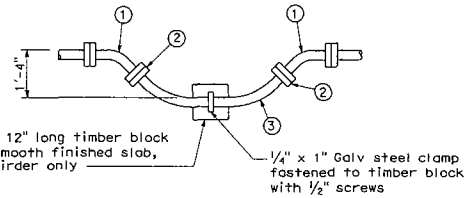
BOX GIRDER INSTALLATION



PIPE INSTALLATION AT HINGE
Same for hanger type installation



INSTALLATION FOR OTHER STRUCTURE TYPES



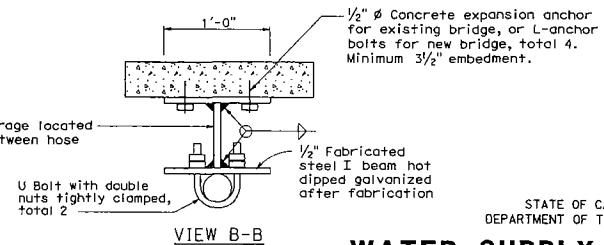
**VIEW A-A
HOSE ASSEMBLY**

NUMBERED ITEM

- ① 45° flanged elbow with insulated flange connection
- ② Flanged hose fitting
- ③ Hose 6'-6" in length (size shall be same as pipe)

NOTES:

1. Extend pipe 5'-0" beyond the edge of shoulder or as shown on bridge plans. Terminate in a pull box as shown on Standard Plan B14-3, Detail B.
2. Water supply line shall be installed parallel to bridge soffit or deck.
3. For concrete pipe support, pipe shall be tightly clamped at the pipe support located halfway between hose assemblies. At all other supports, pipe clamp shall be shimmed with steel washer plate to provide 1/4" clearance between pipe and clamp.
4. Maximum spacing between pipe hangers or supports shall be 10'-0" unless otherwise detailed on the plans.
5. Install air release valve using threaded tee or pipe saddle.
6. Openings through diaphragm and bent caps shall be 6" diameter unless otherwise detailed on the plans.
7. For details of pipe hanger and concrete pipe support see Standard Plan B14-5.



VIEW B-B

**WATER SUPPLY LINE (BRIDGE)
(PIPE SIZES LESS THAN 4")**

NO SCALE

DIST.	COUNTY	ROUTE	POST MILES TOTAL PROJECT	SHEET NO.	TOTAL SHEETS
May 1, 2006 PLANS APPROVAL DATE					
The State of California or its officers or agents shall not be responsible for the accuracy or completeness of electronic copies of this plan sheet.					
To get to the Caltrans web site, go to: http://www.dta.ca.gov					