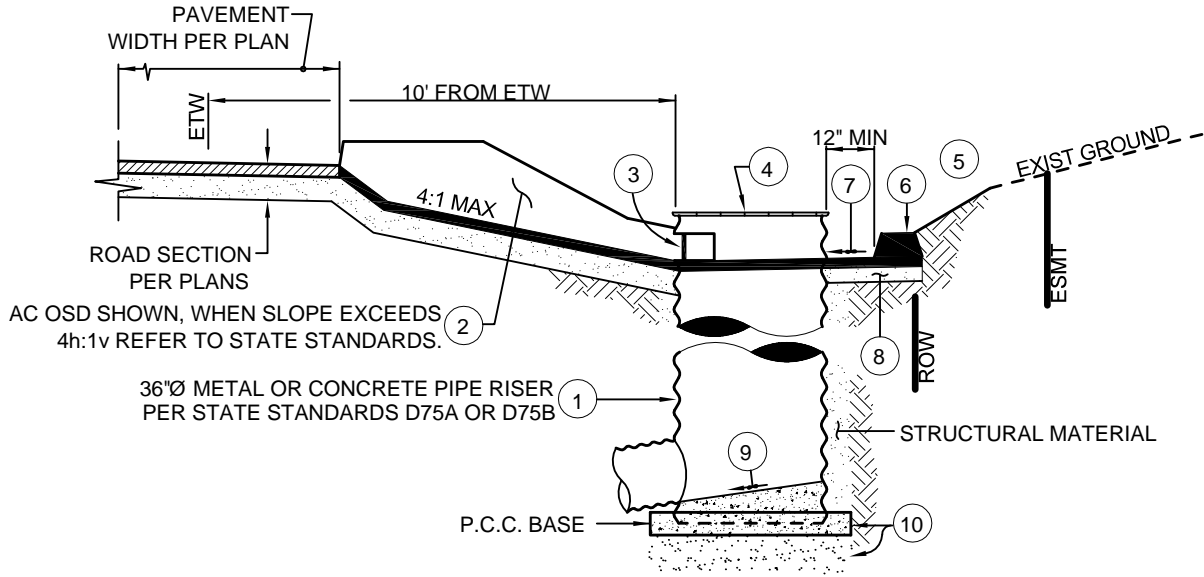


Revisions

Description	Approved	Date	Description	Approved	Date

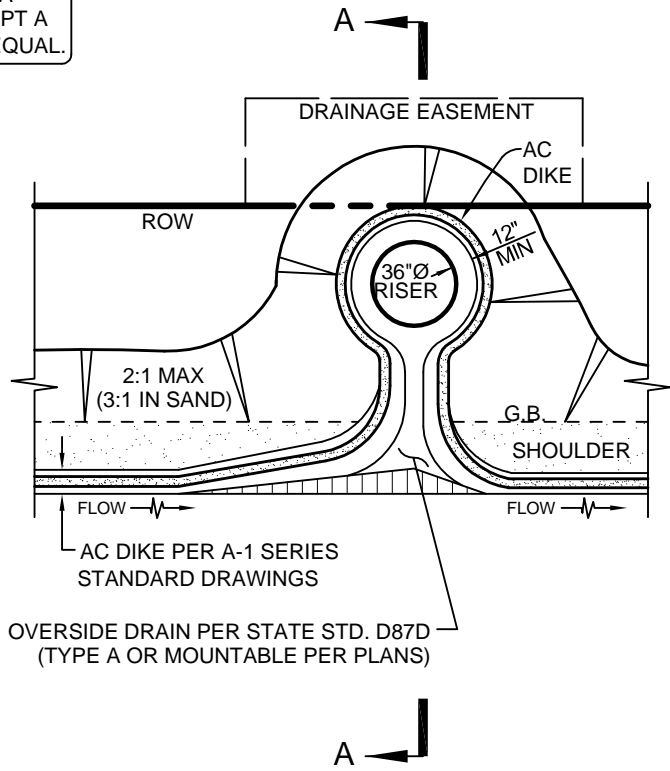


SECTION A-A

ALL CATCH BASINS SHALL BE EQUIP WITH A STAINLESS STEEL FRAME DESIGNED TO ACCEPT A "DrainPac™" STORM DRAIN FILTER INSERT, OR EQUAL.

NOTES:

1. REFER TO THE 2006 STATE STANDARD PLANS D75A OR D75B FOR PIPE RISER DETAILS. THE PROJECT ENGINEER SHALL PROVIDE ALL DESIGN SPECIFICATIONS ON THE PLANS (RISER TYPE, LID, GRATE, PIPE SIZE, ETC).
2. REFER TO THE 2006 STATE STANDARD D78D FOR AC OVERSIDE DRAIN DETAILS AND SPECIFICATIONS. THE PROJECT ENGINEER SHALL PROVIDE ALL DESIGN SPECIFICATIONS ON THE PLANS.
3. CONSTRUCT TRASH RACK PER THE 2006 STATE STANDARD PLAN D75C.
4. A LID MAY BE USED WHEN THE RISER NOT LOCATED IN SUMP CONDITIONS, OTHERWISE USE TYPE "GMP" OR "GCP" GRATE. PROJECT ENGINEER SHALL PROVIDE HYDRAULIC CALCULATIONS.
5. MINIMUM CUT SLOPE SHALL BE 2 HORIZONTAL:1 VERTICAL (3h:1v IN NATIVE SAND).
6. TYPE "A" AC DIKE PER DRAWING C-3..
7. SLOPE TO DRAIN TOWARDS RISER OPENING.
8. 2-INCH MINIMUM ASPHALT CONCRETE OVER 6-INCH MINIMUM COMPACTED AGGREGATE BASE.
9. RISER FLOOR SLOPED TO DRAIN AT 4h:1v TOWARDS OUTLET, PROVIDE WOOD FLOAT FINISH.
10. PORTLAND CEMENT CONCRETE BASE PER STATE STANDARD D75A OR D75B, OVER 6-INCH MINIMUM CLASS II AGGREGATE BASED TO 95% RELATIVE COMPACTION.
11. ALL EXPOSED STEEL SHALL BE COLD GALVANIZED.
12. A DRAINAGE EASEMENT SHALL BE OFFERED TO THE PUBLIC WHENEVER THE IMPROVEMENTS EXTEND BEYOND THE RIGHT-OF-WAY.
13. MODIFY AS REQUIRED FOR SUMP CONDITIONS.



PLAN
REDUCED SCALE



SAN LUIS OBISPO COUNTY DEPARTMENT OF PUBLIC WORKS
RURAL CATCH BASIN
ASPHALT DIKE CONDITION

Scale: NTS	Issued: Aug. 2006
Drawing No: D-2b	
Sheet No:	1 OF 1