

NOTES:

1. MANHOLE FRAME AND COVER SHALL BE MADE OF GRAY CAST IRON CONFORMING TO THE LATEST A.S.T.M. STANDARD A48, CLASS 30 OR BETTER. PRESSURE PLATE SHALL BE STEEL.
2. ALL PARTS OF THE MANHOLE FRAME AND COVER EXCEPT MACHINED SURFACES SHALL BE COATED WITH ASPHALTUM PAINT.
3. MANHOLE FRAME AND COVER SHALL BE TESTED FOR ACCURACY OF FIT AND SHALL BE MARKED IN SETS BEFORE DELIVERY. THE COVER SHALL FIT THE FRAME SNUGLY BUT NOT TIGHTLY.
4. WEIGHTS OF FRAME, COVER, AND PRESSURE PLATE SHALL NOT VARY MORE THAN TWO PERCENT FROM THOSE GIVEN HEREON.
5. THIS STRUCTURE SHALL BE USED WITH STANDARD PRESSURE MANHOLE SHAFT. IT MAY BE USED FOR HYDROSTATIC HEADS UP TO 25 FEET ABOVE STEEL PLATE.

APPROVED: PUBLIC WORKS DIRECTOR

*James W. Rodkey Jr.* DATE *9/7/00*  
 JAMES W. RODKEY, JR.

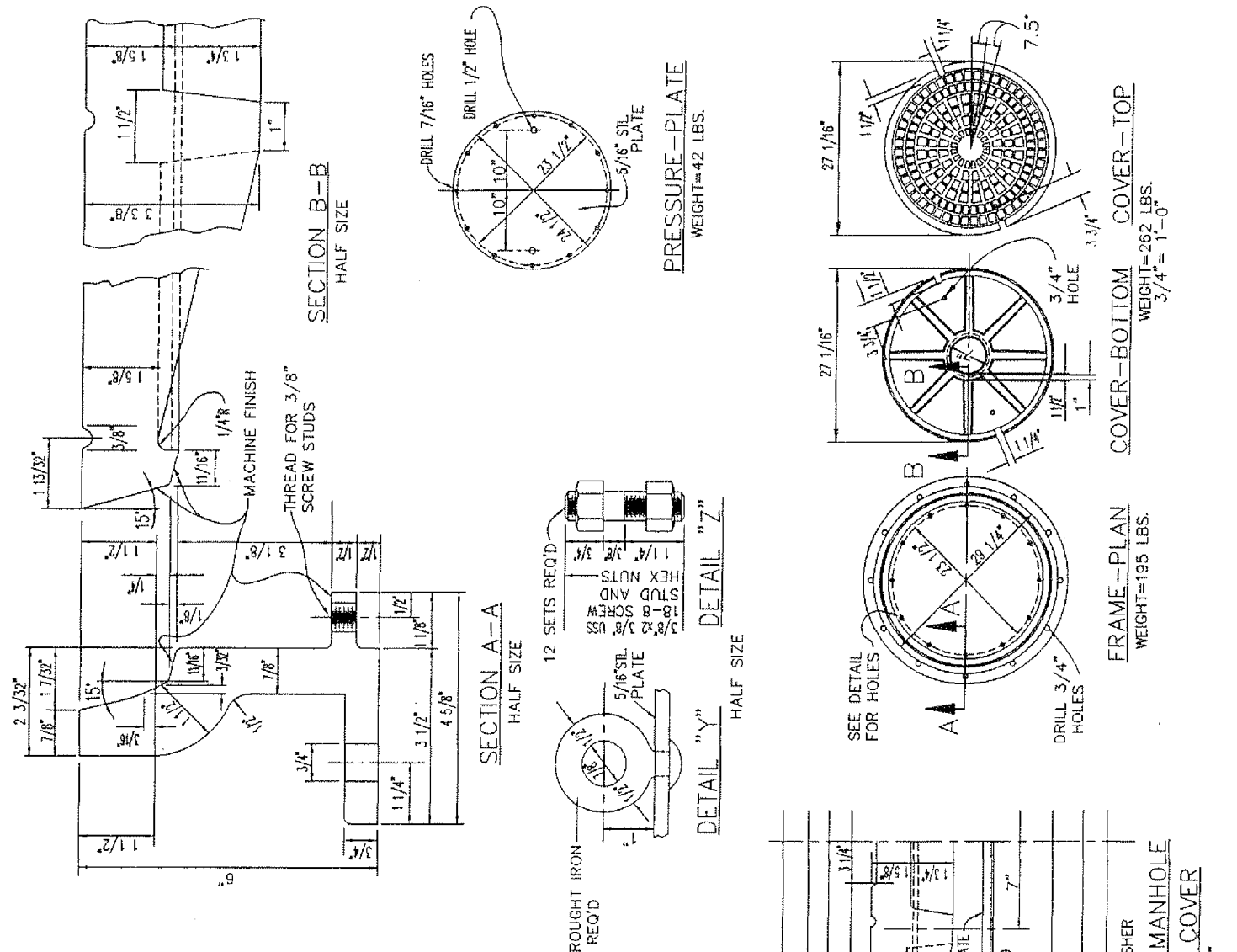
APPROVED: CITY ENGINEER  
*Robert K. Holt* DATE *9/13/00*  
 ROBERT K. HOLT, P.E.

REVISION	BY	DATE

# CITY OF BLYTHE

## MANHOLE FRAME & COVER PRESSURE TYPE

STANDARD DRAWING NO. SD-520



NOTES:

1. MANHOLE FRAME AND COVER SHALL BE MADE OF GRAY CAST IRON CONFORMING TO THE LATEST A.S.T.M. STANDARD A48, CLASS 30 OR BETTER. PRESSURE PLATE SHALL BE STEEL.
2. ALL PARTS OF THE MANHOLE FRAME AND COVER EXCEPT MACHINED SURFACES SHALL BE COATED WITH ASPHALTUM PAINT.
3. MANHOLE FRAME AND COVER SHALL BE TESTED FOR ACCURACY OF FIT AND SHALL BE MARKED IN SETS BEFORE DELIVERY. THE COVER SHALL FIT THE FRAME SNUGLY BUT NOT TIGHTLY.
4. WEIGHTS OF FRAME, COVER, AND PRESSURE PLATE SHALL NOT VARY MORE THAN TWO PERCENT FROM THOSE GIVEN HEREON.
5. THIS STRUCTURE SHALL BE USED WITH STANDARD PRESSURE MANHOLE SHAFT. IT MAY BE USED FOR HYDROSTATIC HEADS UP TO 25 FEET ABOVE STEEL PLATE.

# CITY OF BLYTHE

## MANHOLE FRAME & COVER PRESSURE TYPE

STANDARD DRAWING NO. SD-520