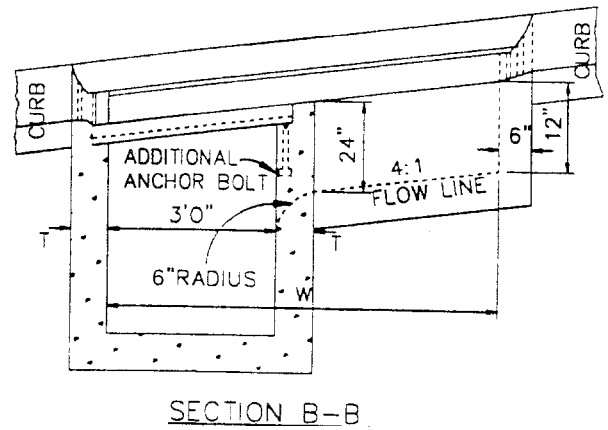
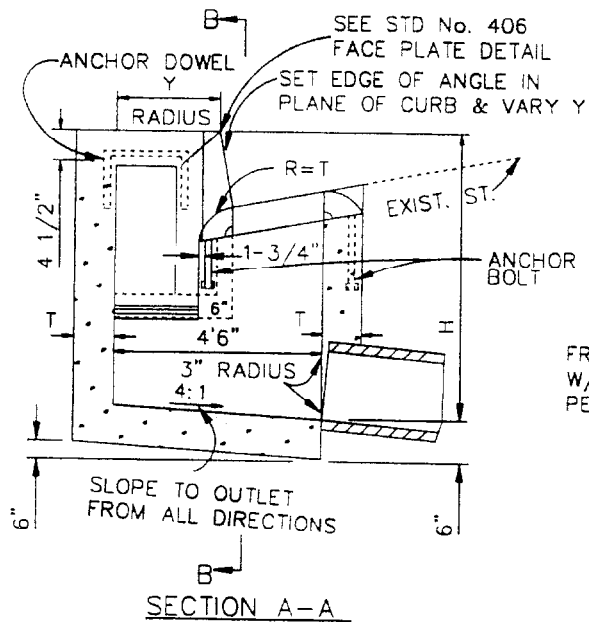


THE OUTER EDGES OF THE WALLS SHALL CONFORM TO THE STREET OR LOCAL DEPRESSION SURFACE. THE GRATING SHALL BE LAID IN THE PLANE OF THIS SURFACE. SEE STD. NO. 424 CASE B FOR GUTTER DEPRESSION.

PLAN



FRAME & GRATING W/ ANCHOR BOLTS PER STD. NO. 407



CITY OF MURRIETA
 DEPARTMENT OF DEVELOPMENT SERVICES

REVISIONS	
5/92	APPROVED

COMBINATION INLET
 CATCH BASIN NO.1

STD. NO.
403a