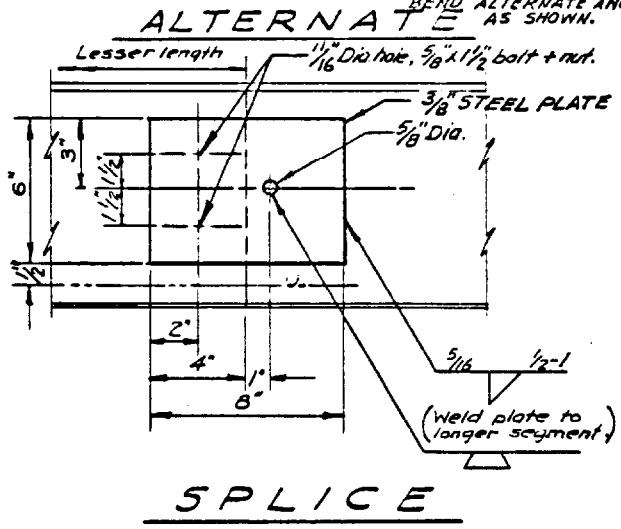
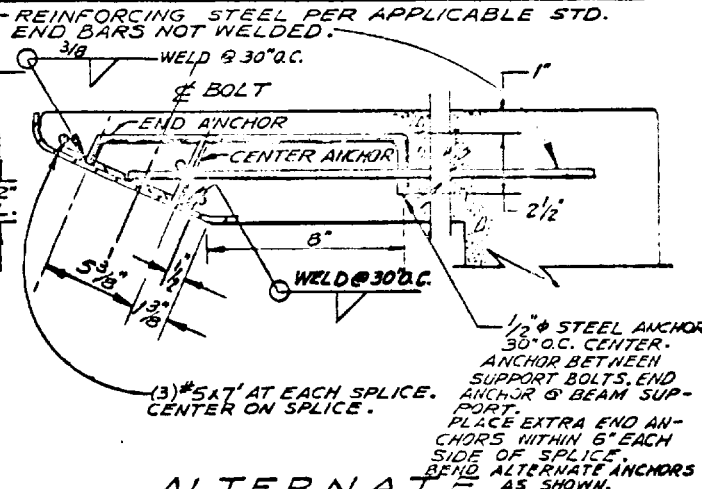
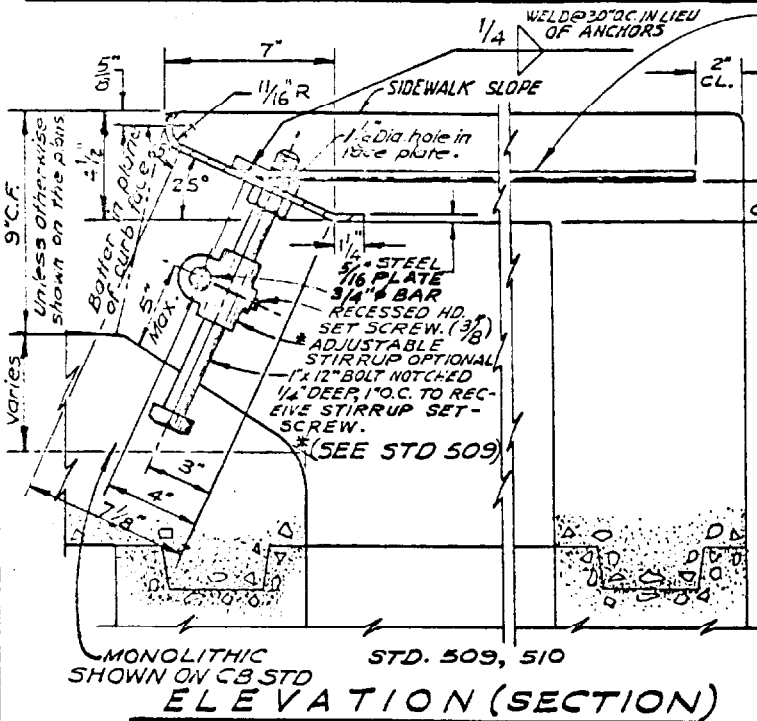


UNLESS OTHERWISE SPECIFIED ON PLANS & SPECIFICATIONS



1. Protection bar shall be installed per Std. 509.
2. All metal parts shall be galvanized after fabrication.
3. When catch basins are constructed on curves, the maximum face plate chord length shall not exceed one inch from the arc measured radially. If more than one chord is required, lengths shall be equal.
4. When face plate is between 22 and 41 feet long, two sections may be used. Exceeding 41 feet, three sections may be used. Splices shall be placed one fourth the distance between supports.

SIMILAR TO EXCEPT AS UNDERLINED
 ORANGE CO. NO.
 STATE OF CA.
 THIS ---
 THIS ---
 DATE: 12-1-62 SUPERSEDES:
 REV: DATED: