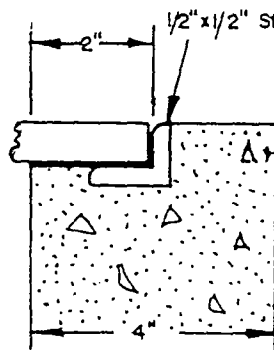
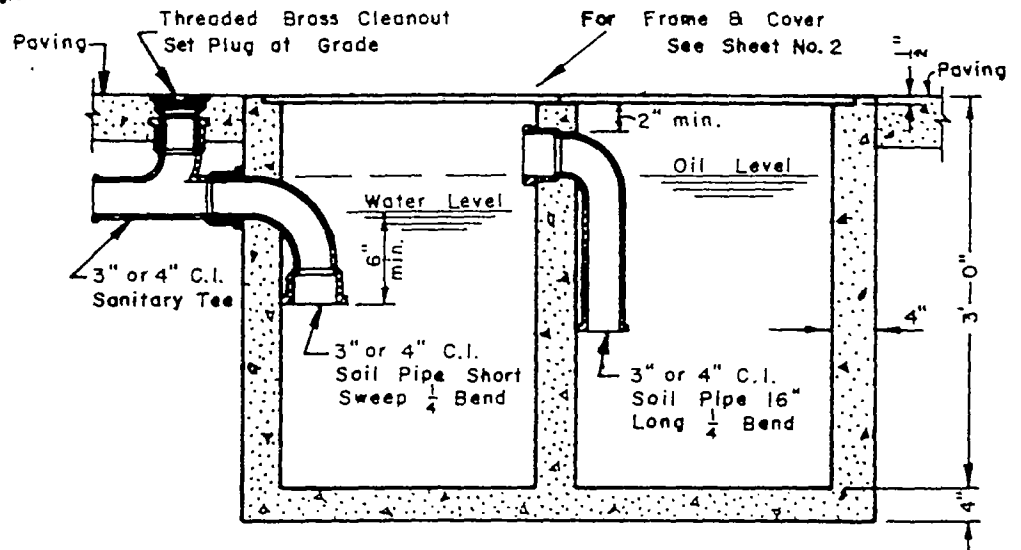


PLAN VIEW



STEEL ANGLE DETAIL



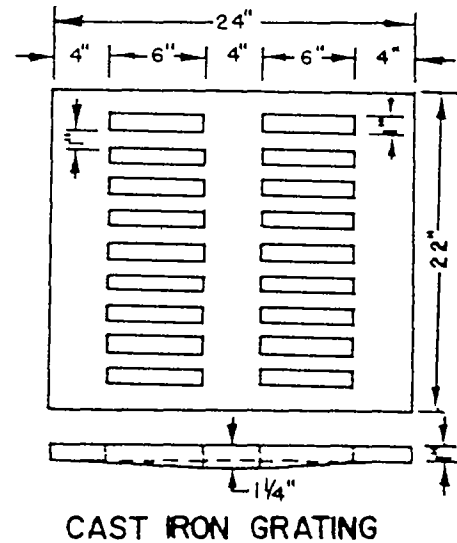
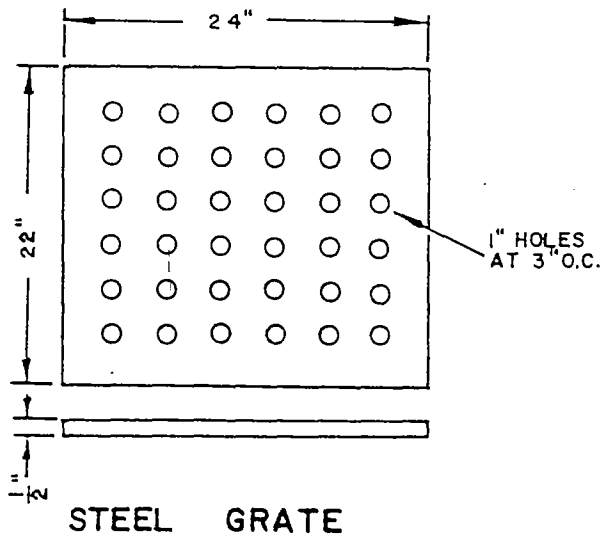
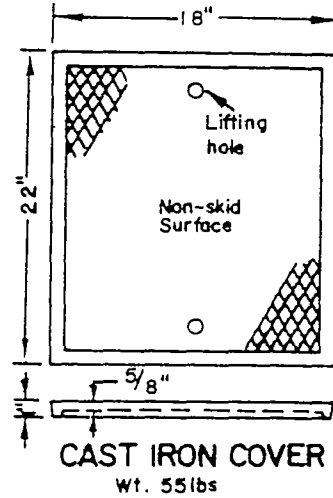
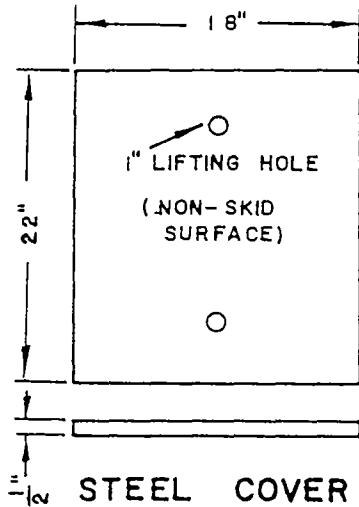
SECTION A - A

NOTES:

1. Fittings shall be as shown or as approved by Plumbing Inspector.
2. All dimensions given are minimum unless otherwise specified.
3. All concrete shall be class "B".

[Signature]
PLUMBING INSPECTOR

CITY OF COLTON PUBLIC WORKS DEPT.		
GREASE AND SAND TRAP		
DRAWN BY G. ATKINS	SCALE N. T. S.	DRAWING NO.
CHK'D <i>[Signature]</i>	DATE OCT. 1963	307
APP'D <i>[Signature]</i>		



NOTE:

- STEEL COVER & GRATE MAY BE USED IN LIEU OF CAST IRON FRAME & COVER IF APPROVED BY PLUMBING INSPECTOR.

V. E. ...
PLUMBING INSPECTOR

CITY OF COLTON PUBLIC WORKS DEPT.		
COVER FOR GREASE AND SAND TRAP		
DRAWN BY T. FARKAS	SCALE N.T.S.	DRAWING NO. 307
CHK'D <i>DHB</i>	DATE OCT. 1963	
APP'D <i>E. Glenn Wilson</i>		