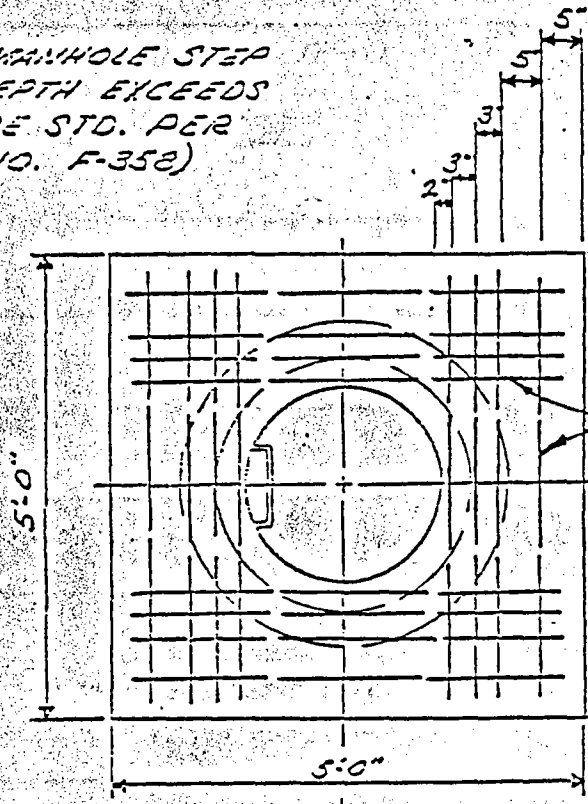


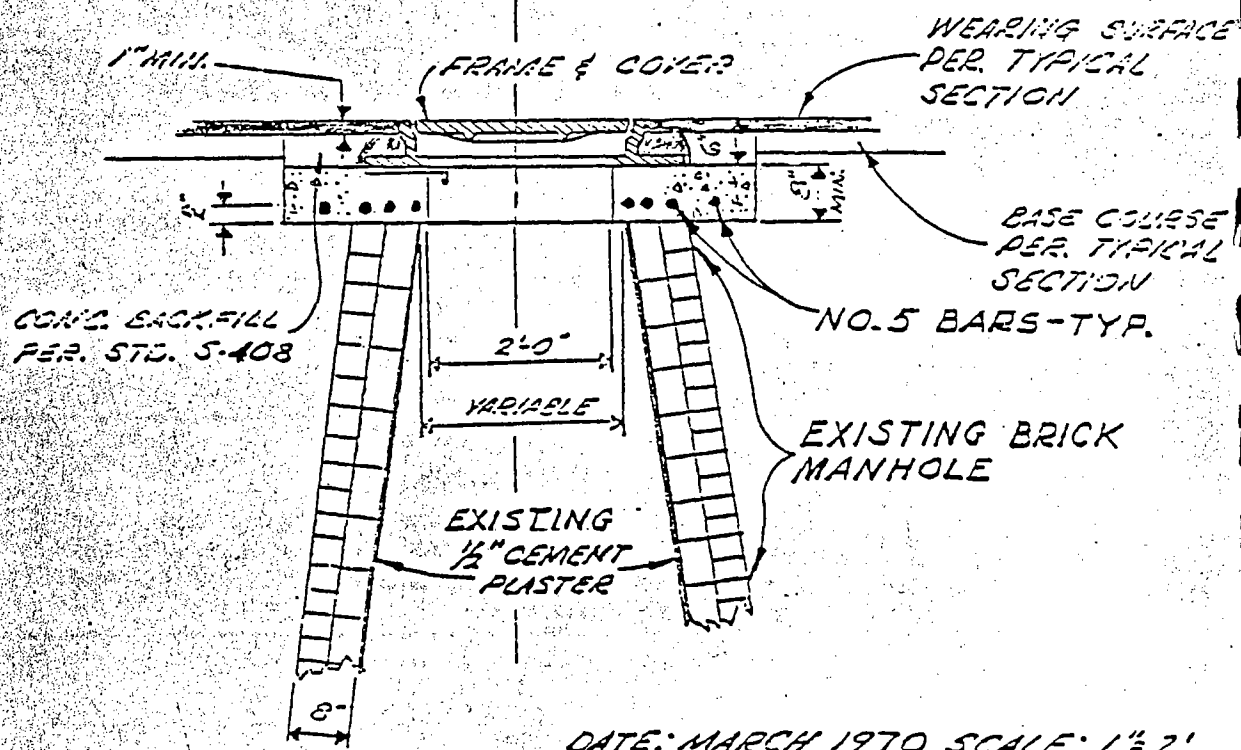
INSTALL MANHOLE STEP
WHEN DEPTH EXCEEDS
4' FT. (USE STD. PER
DRWG. NO. F-358)



2" TYPICAL

NO. 5 BARS AROUND
MANHOLE AS SHOWN

REMOVE EXIST. BAILS,
RUEBLE, & FRAME
& COVER. CONSTRUCT
8" MIN. TOP DECK
& REINFORCE AS
SHOWN. REUSE FRAME
& COVER. (AS DIRECTED)



WEARING SURFACE
PER. TYPICAL
SECTION

BASE COURSE
PER. TYPICAL
SECTION

NO. 5 BARS-TYP.

EXISTING BRICK
MANHOLE

EXISTING
1/2" CEMENT
PLASTER

COND. BACKFILL
PER. STD. S-408

DATE: MARCH 1970 SCALE: 1 1/2" = 2'

CITY OF PASADENA-PUBLIC WORKS DEPARTMENT

MANHOLE RECONSTRUCTION

STANDARD PLAN

APPROVED *[Signature]*
DIRECTOR OF PUBLIC WORKS

4/1/70
DATE

F-384