

| DIST | COUNTY | ROUTE | POST MILES TOTAL PROJECT | SHEET NO. | TOTAL SHEETS |
|------|--------|-------|--------------------------|-----------|--------------|
| | | | | | |

Mark S. Turner
PROFESSIONAL LAND SURVEYOR

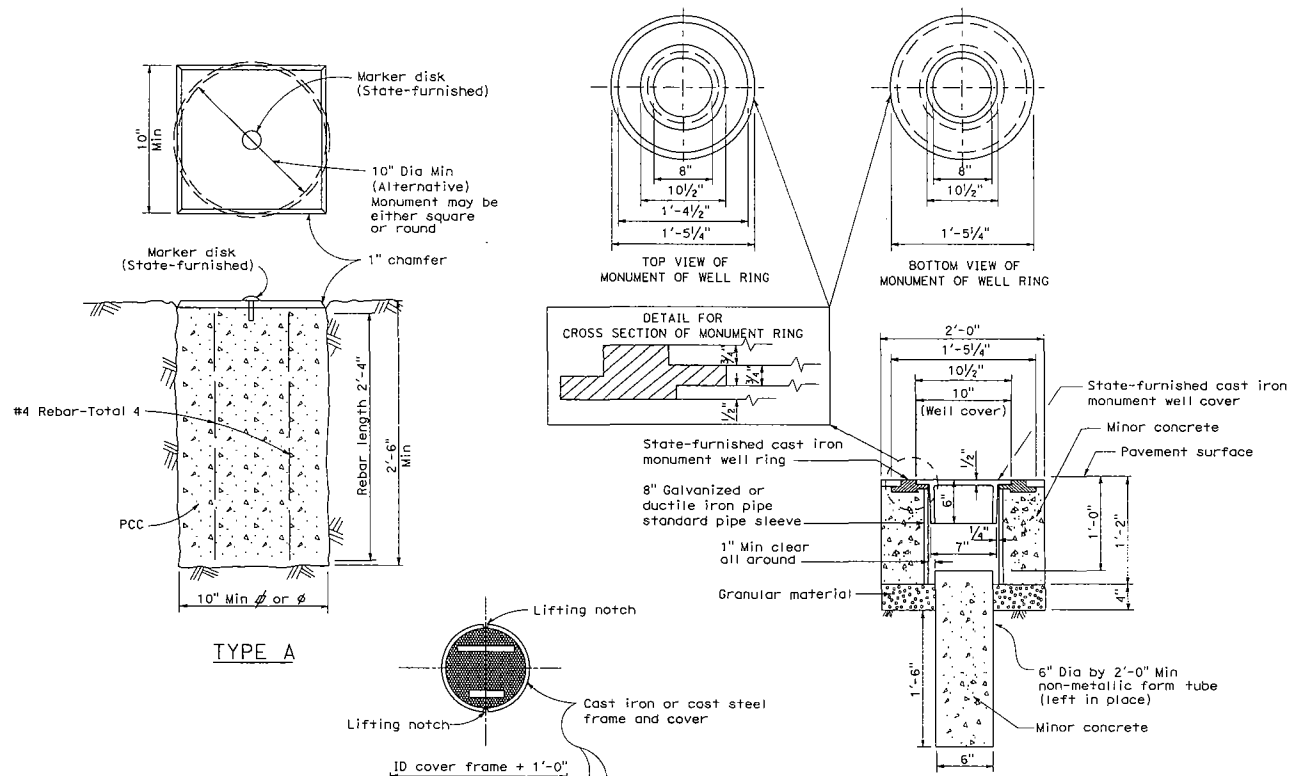
May 1, 2006
PLANS APPROVAL DATE

The State of California or its officers or agents shall not be responsible for the accuracy or completeness of electronic copies of this plan sheet.

To get to the Caltrans web site, go to: <http://www.dtd.ca.gov>

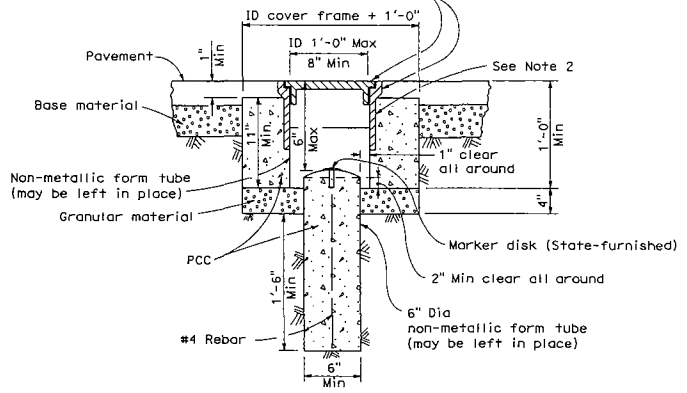
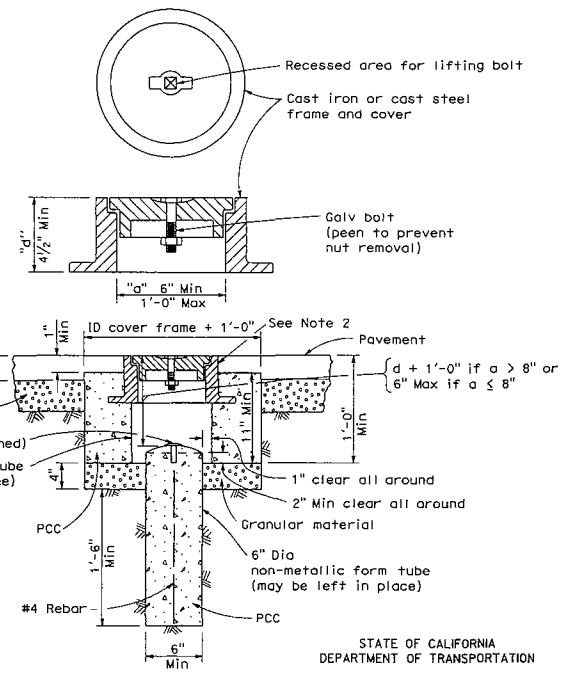
Mark S. Turner
No. 6228
Exp. 3-31-08
STATE OF CALIFORNIA

2006 STANDARD PLAN A74



NOTES:

1. The configuration of the cast iron or cast steel frame and cover may vary from that shown.
2. Frame shall be embedded in the concrete a minimum of 3".
3. Type D monument shall be either Alternative No. 1 or Alternative No. 2 at the contractor's option.
4. All portland cement concrete shall be Class 2 or minor concrete with 1" maximum aggregate.



STATE OF CALIFORNIA
DEPARTMENT OF TRANSPORTATION
SURVEY MONUMENTS
NO SCALE

A74

28