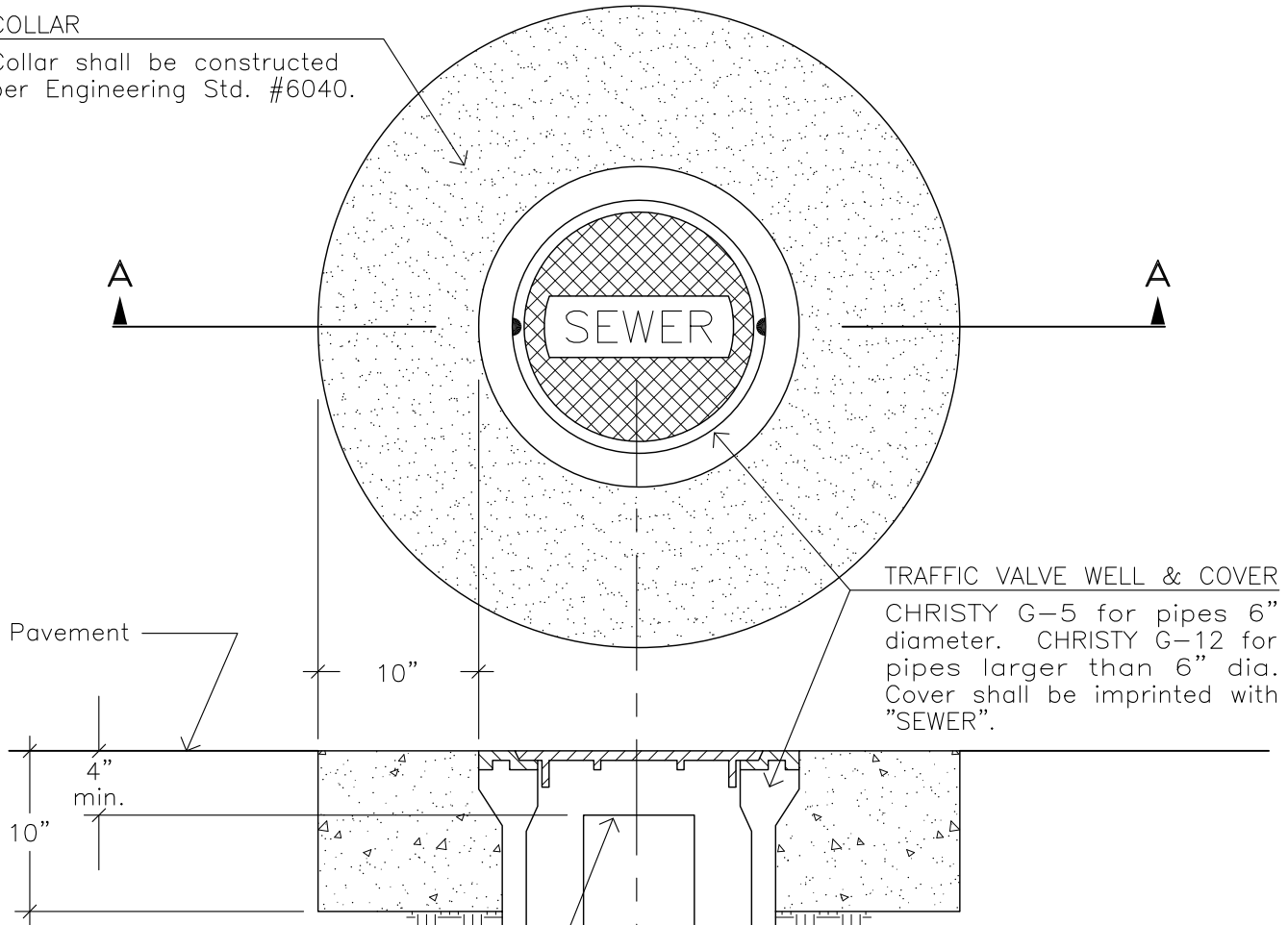


COLLAR

Collar shall be constructed per Engineering Std. #6040.



TRAFFIC VALVE WELL & COVER
 CHRISTY G-5 for pipes 6" diameter. CHRISTY G-12 for pipes larger than 6" dia. Cover shall be imprinted with "SEWER".

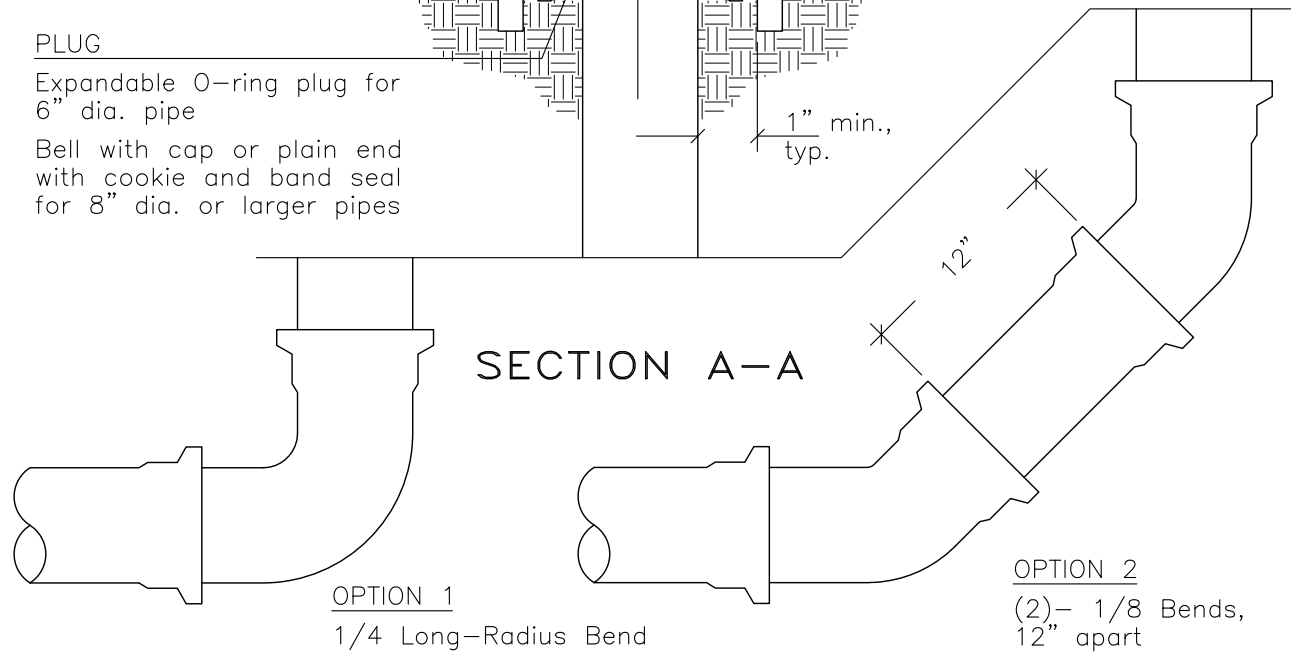
Pavement
 4" min.
 10"

PLUG

Expandable O-ring plug for 6" dia. pipe
 Bell with cap or plain end with cookie and band seal for 8" dia. or larger pipes

1" min., typ.

SECTION A-A

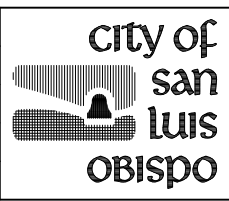


OPTION 1
 1/4 Long-Radius Bend

OPTION 2
 (2)- 1/8 Bends,
 12" apart

CLEANOUTS ARE NOT ALLOWED ON NEW CONSTRUCTION.

REVISIONS	BY	APP	DATE
New border	JDL	WAP	9-97
Change "Collar" note	RMH	9-95	9-95
STANDARD CURRENT AS OF: January 2008			



SEWER CLEANOUT & WELL

6710