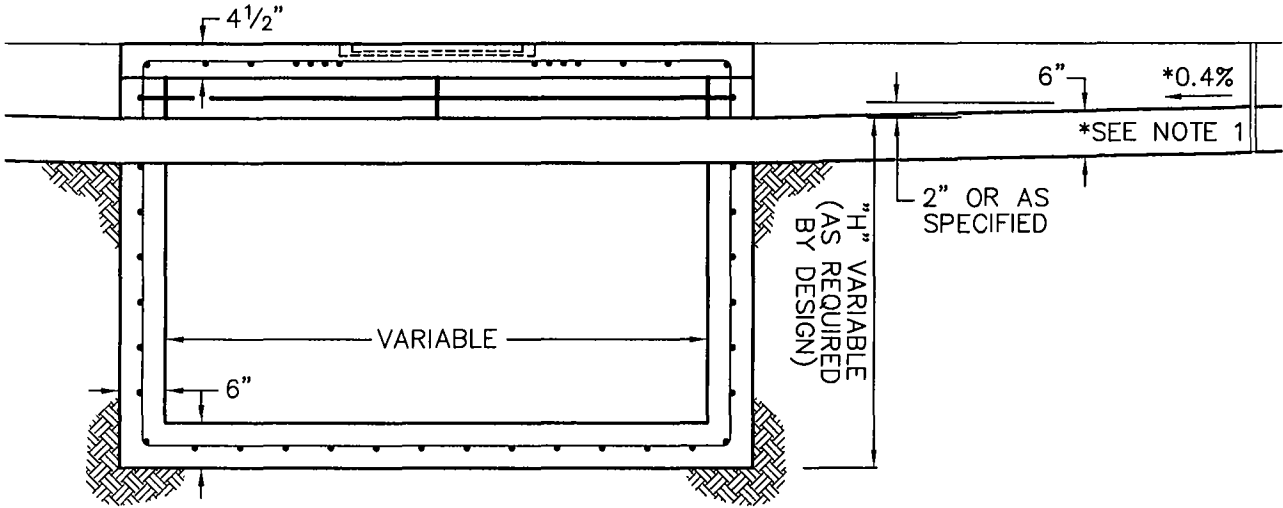


PLAN



SECTION

NOTES:

1. THE GUTTER CROSS SLOPE SHALL NOT EXCEED 8.33%.
THE GUTTER FLOW LINE SHALL NOT BE LESS THAN 0.3% WITHIN 30 FEET OF THE EDGE OF THE DROP INLET OPENING. THE APRON TRANSITION MAY BE EXTENDED UP TO 15 FEET IN LENGTH.

| REV. | DATE | BY |
|-------|---------|--------|
| | 1/26/65 | J.H.F. |
| NOTES | 5/1/77 | M.A.T. |

CITY OF VICTORVILLE - ENGINEERING DEPARTMENT

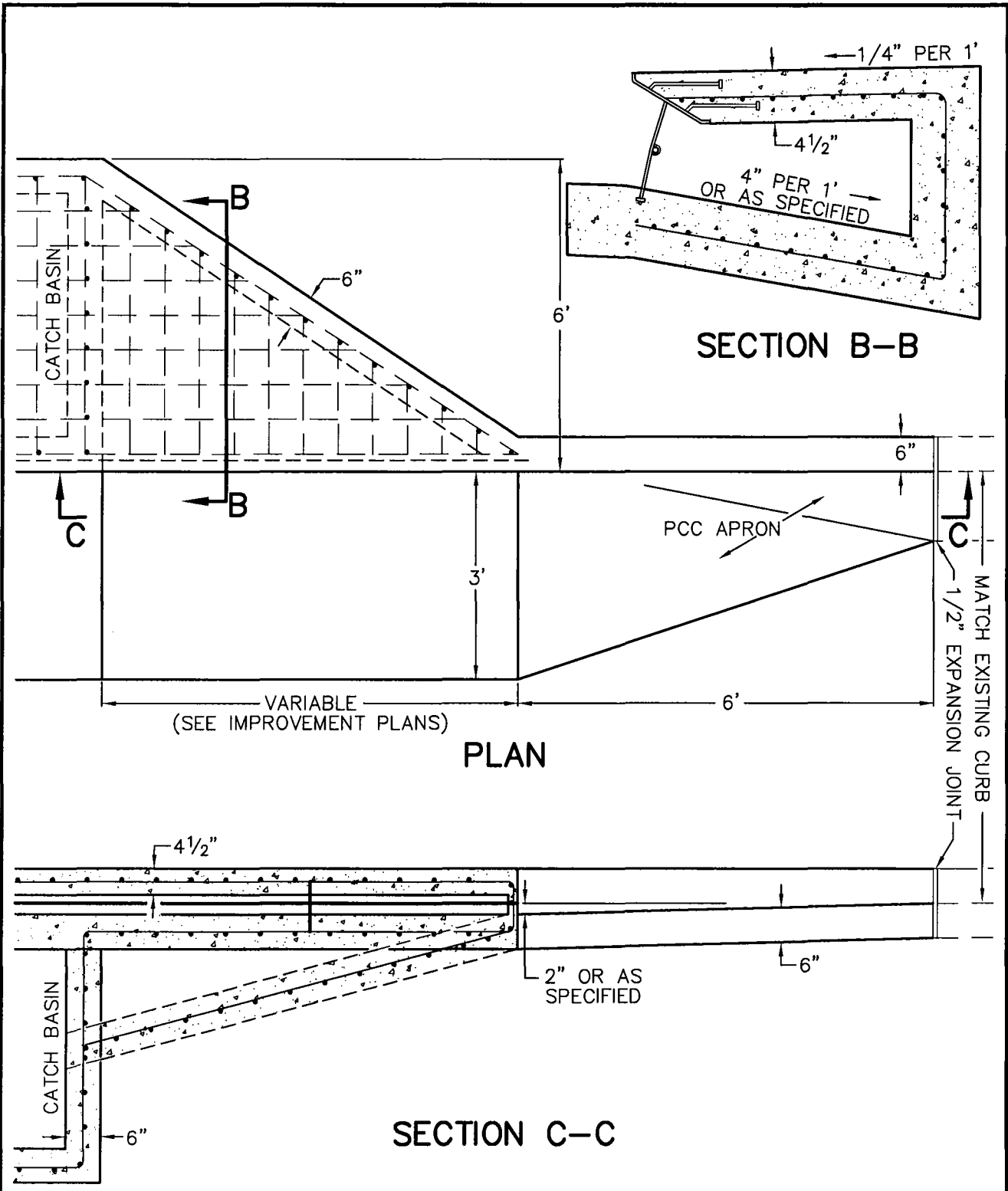
| BOX WIDTH | DATE | BY |
|-----------|---------|--------|
| | 3/21/78 | X.S.S. |
| NOTES | 7/1/94 | D.G.H. |
| | 6/1/07 | STAFF |

STANDARD DROP INLET

JOHN A. McGLADE, CITY ENGINEER

D-02

SHEET 1 OF 3



CITY OF VICTORVILLE - ENGINEERING DEPARTMENT

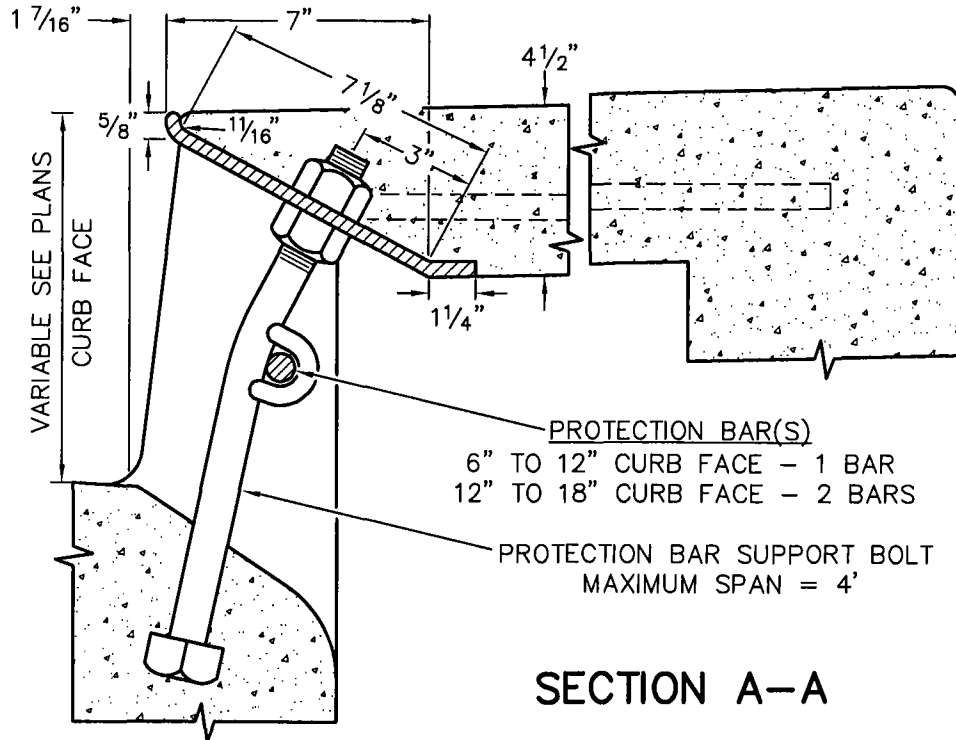
| REV. | DATE | BY |
|------|---------|--------|
| | 10/7/76 | M.A.T. |
| 1 | 6/1/07 | STAFF |

**SIDE INLET FOR
STANDARD DROP INLET**

JOHN A. McGLADE, CITY ENGINEER

D-02

SHEET 2 OF 3



PROTECTION BAR(S)
 6" TO 12" CURB FACE - 1 BAR
 12" TO 18" CURB FACE - 2 BARS

PROTECTION BAR SUPPORT BOLT
 MAXIMUM SPAN = 4'

NOTES:

1. CONCRETE SHALL BE CLASS 1, PER SECTION 90-1.01 OF STANDARD SPECIFICATIONS.
2. ALL CONCRETE SHALL HAVE 4% AIR ENTRAINMENT.
3. SEE DRAWING S-01 FOR EXPANSION JOINT DETAIL.
4. FLOOR SLOPE SHALL BE 1" PER FOOT TOWARD OUTLET OR AS SPECIFIED ON THE PLANS.
5. REINFORCING SHALL CONSIST OF NO. 4 DEFORMED BARS AT 6" CENTERS EACH WAY UNLESS OTHERWISE NOTED.
6. ALL STEEL REINFORCING SPLICES SHALL BE LAPPED 40 DIAMETERS.
7. ALL STEEL REINFORCING JOINTS SHALL BE BENT TO 1" RADIUS AND EITHER CONTINUED OR LAPPED 40 DIAMETERS.
8. COVER SHALL BE BOLTED DOWN WITH 2 SOCKET SET SCREW BOLTS PER DETAILS ON STANDARD DRAWING D-04.
9. FRAME AND COVER SHALL BE ALHAMBRA FOUNDRY NO. A1530B, GALVANIZED, 22" DIAMETER OPENING OR EQUAL.
10. CURB PROTECTION PLATE SHALL BE ALHAMBRA FOUNDRY NO. A3911 OR EQUAL. PROTECTION BAR SHALL BE ALHAMBRA FOUNDRY A1564 OR EQUAL. PROTECTION BAR SUPPORT BOLTS SHALL BE ALHAMBRA FOUNDRY A1572 OR EQUAL.
11. STEPS - NONE REQUIRED WHERE "H" IS 3'6" OR LESS. INSTALL ONE STEP 16"± ABOVE FLOOR WHEN "H" IS 3'6" TO 5'0". WHERE "H" IS MORE THAN 5'0", STEPS SHALL BE EVENLY SPACED AT 12"± INTERVALS FROM 16"± ABOVE FLOOR TO WITHIN 12"± OF THE TOP OF THE BOX. PLACE STEPS IN WALL WITHOUT PIPE OPENINGS.
12. ALL EXPOSED METAL PARTS SHALL BE GALVANIZED.

| REV. | DATE | BY |
|------|---------|--------|
| | 1/26/65 | J.H.F. |

CITY OF VICTORVILLE - ENGINEERING DEPARTMENT

| | | | | |
|-------|--------|--------|--------------------------------|--------------|
| NOTES | 5/1/77 | M.A.T. | STANDARD DROP INLET | D-02 |
| NOTES | 7/1/94 | D.G.H. | | |
| | 6/1/07 | STAFF | JOHN A. McGLADE, CITY ENGINEER | SHEET 3 OF 3 |