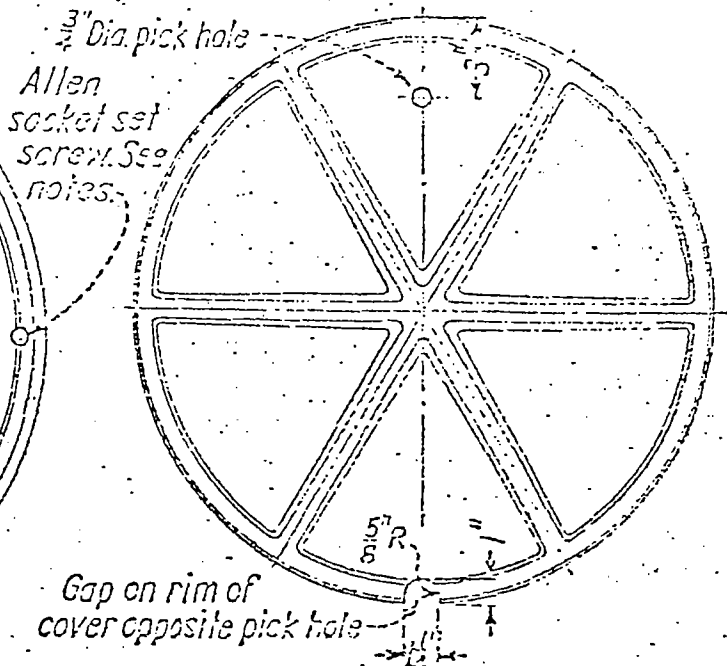
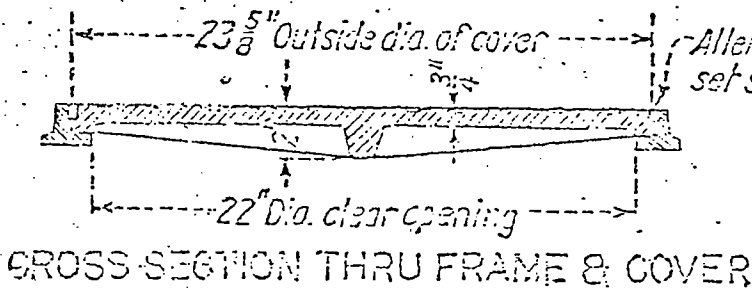


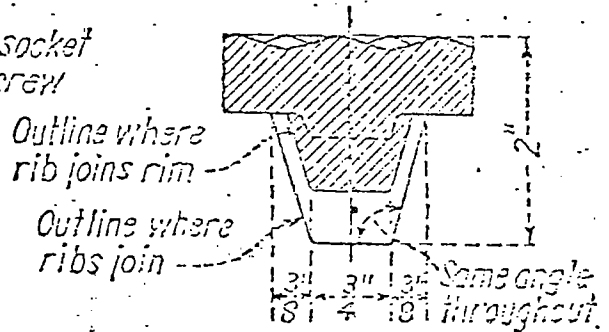
TOP OF MANHOLE FRAME & COVER



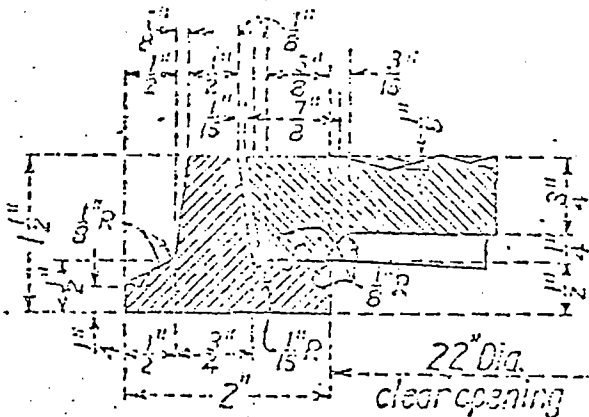
BOTTOM OF MANHOLE COVER



GROSS SECTION THRU FRAME & COVER



CROSS SECTION THRU RIB AT MID RADIUS



CROSS SECTION THRU RIM

NOTES

- Frame and cover shall be gray cast iron conforming to the latest A.S.T.M. standard A43, class 30 or better.
- Install two 3/4" x 3/4" Allen socket set screws, 90° to pick hole, in holes drilled and tapped 1" in depth.
- All parts of the frame and cover except machined surfaces shall be coated with asphaltum paint.
- Frame and cover shall be tested for accuracy of fit and shall be marked in sets before delivery.
- Frame and cover shall be positioned such that the identification lettering is parallel with and readable from the street-side of the curb.

CITY OF PASADENA — PUBLIC WORKS DEPARTMENT

MANHOLE FRAME AND COVER FOR CATCH BASINS

APPROVED BY:

*[Handwritten signature]*

DRAWING NO. S-112