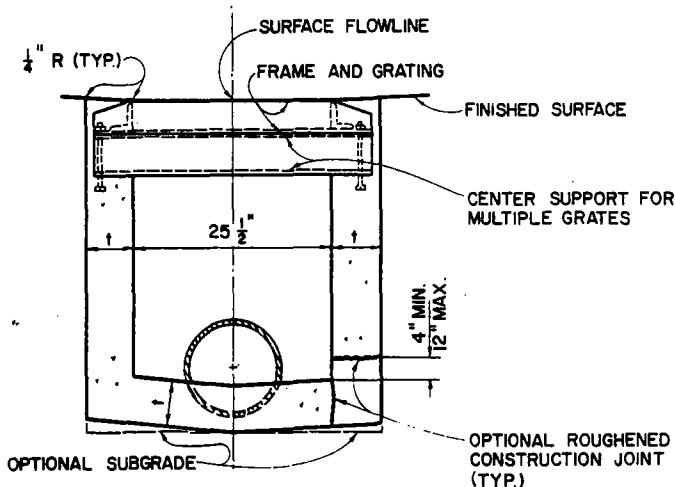
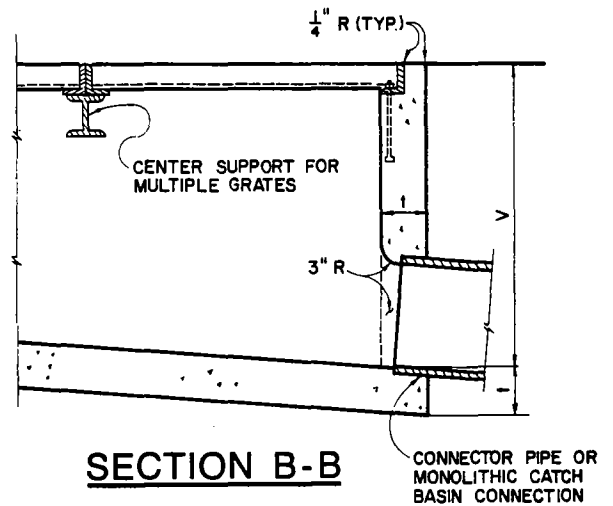


PLAN



SECTION A-A



SECTION B-B

STRUCTURAL DATA			
WALL AND SLAB DIMENSIONS AND REINFORCEMENT REQUIREMENTS			
NO. OF GRATES	MAX. V	t	REINFORCEMENT FOR WALLS AND SLABS
1-2	4'	6"	NOT REQUIRED
1-2	8'	8"	
1-2	10'	10"	
1-2	12'	10"	REQUIRED
3-4	4'	6"	NOT REQUIRED
3-4	7'	8"	
3-4	8'	8"	
3-4	12'	10"	REQUIRED
5-6	4'	6"	NOT REQUIRED
5-6	6'	8"	
5-6	8'	8"	
5-6	12'	10"	REQUIRED
> 6	4'	6"	
> 6	8'	8"	
> 6	12'	10"	

REVISIONS		CITY OF LONG BEACH, CALIFORNIA DEPARTMENT OF PUBLIC WORKS	STANDARD PLAN NO.
NO.	DATE		
1		CATCH BASIN NO. 5 LONGITUDINAL GRATING TYPE	605
2			
3			
4			
APPROVED BY: <i>Edward J. Sute</i>		DATE: 6-26-89	SHEET
CITY ENGINEER R.E. No. 24233		EX. DATE 12-31-89	1 OF 2

NOTES:

1. ALL CURVED CONCRETE SURFACES SHALL BE FORMED BY CURVED FORMS AND SHALL NOT BE SHAPED BY PLASTERING.
2. ONE GRATING IS REQUIRED UNLESS OTHERWISE SHOWN ON THE PROJECT PLANS.
3. FLOOR OF BASIN SHALL BE GIVEN A STEEL TROWEL FINISH AND SHALL HAVE A LONGITUDINAL AND LATERAL SLOPE OF 1:12 MINIMUM AND 1:3 MAXIMUM, EXCEPT WHERE THE SURFACE GRADE EXCEEDS 8 PERCENT, IN WHICH CASE THE LONGITUDINAL SLOPE OF THE FLOOR SHALL BE THE SAME AS THE SURFACE GRADE. SLOPE FLOOR FROM ALL DIRECTIONS TO THE OUTLET.
4. DIMENSIONS:
 $V = 3.5$ FEET.
 V_U = THE DEPTH AT THE UPSTREAM END OF THE BASIN AND SHALL BE DETERMINED BY THE REQUIREMENTS OF NOTE 3, BUT SHALL NOT BE LESS THAN 2.5 FEET.
 V_I = THE DEPTH AT THE INVERT OF THE INLET. NOTED ON THE PROJECT PLANS.
 $W = 2$ FEET 11-3/8 INCHES FOR ONE GRATING; ADD 3 FEET 5-3/8 INCHES FOR EACH ADDITIONAL GRATING.
 A = THE ANGLE, IN DEGREES, INTERCEPTED BY THE CENTERLINE OF THE CONNECTOR PIPE AND THE CATCH BASIN WALL TO WHICH THE CONNECTOR PIPE IS ATTACHED.
5. PLACE CONNECTOR PIPES AS INDICATED ON THE PROJECT PLANS. UNLESS OTHERWISE SPECIFIED, THE CONNECTOR PIPE SHALL BE LOCATED AT THE DOWNSTREAM END OF THE BASIN. WHERE THE CONNECTOR PIPE IS SHOWN AT A CORNER, THE CENTERLINE OF THE PIPE SHALL INTERSECT THE INSIDE CORNER OF THE BASIN. THE PIPE MAY BE CUT AND TRIMMED AT A SKEW NECESSARY TO INSURE MINIMUM 3-INCH PIPE EMBEDMENT, ALL AROUND, WITHIN THE CATCH BASIN WALL, AND 3-INCH RADIUS OF ROUNDING OF STRUCTURE CONCRETE, ALL AROUND, ADJACENT TO PIPE ENDS. A MONOLITHIC CATCH BASIN CONNECTION SHALL BE USED TO JOIN THE CONNECTOR PIPE TO THE CATCH BASIN WHENEVER ANGLE "A" IS LESS THAN 70 DEGREES OR GREATER THAN 110 DEGREES, OR WHENEVER THE CONNECTOR PIPE IS LOCATED IN A CORNER. THE OPTIONAL USE OF A MONOLITHIC CATCH BASIN CONNECTION IN ANY CASE IS PERMITTED. MONOLITHIC CATCH BASIN CONNECTIONS MAY BE CONSTRUCTED TO AVOID CUTTING STANDARD LENGTHS OF PIPE.
6. STEPS SHALL BE LOCATED AS SHOWN. IF THE CONNECTOR PIPE INTERFERES WITH THE STEPS, THEY SHALL BE LOCATED ON THE OPPOSITE WALL AT THE CENTERLINE OF THE DOWNSTREAM GRATING. STEPS SHALL BE SPACED 12 INCHES APART. THE TOP STEP SHALL BE 7 INCHES BELOW THE TOP OF THE GRATING AND PROJECT 2-1/2 INCHES. ALL OTHER STEPS SHALL PROJECT 5 INCHES.
7. THE FOLLOWING STANDARD PLANS ARE INCORPORATED HEREIN:
 609 MONOLITHIC CATCH BASIN CONNECTION
 610 CATCH BASIN REINFORCEMENT
 612 FRAME AND GRATING FOR CATCH BASINS
 615 STEEL STEP

REVISIONS		CITY OF LONG BEACH, CALIFORNIA DEPARTMENT OF PUBLIC WORKS	STANDARD PLAN NO.
NO.	DATE		
1		CATCH BASIN NO. 5 LONGITUDINAL GRATING TYPE	605
2			
3			
4			
APPROVED BY: <u>Edward J. Fetz</u>		DATE: <u>6-26-89</u>	SHEET
CITY ENGINEER R.E. No. <u>24233</u>		EX. DATE <u>12-31-89</u>	<u>2</u> OF <u>2</u>