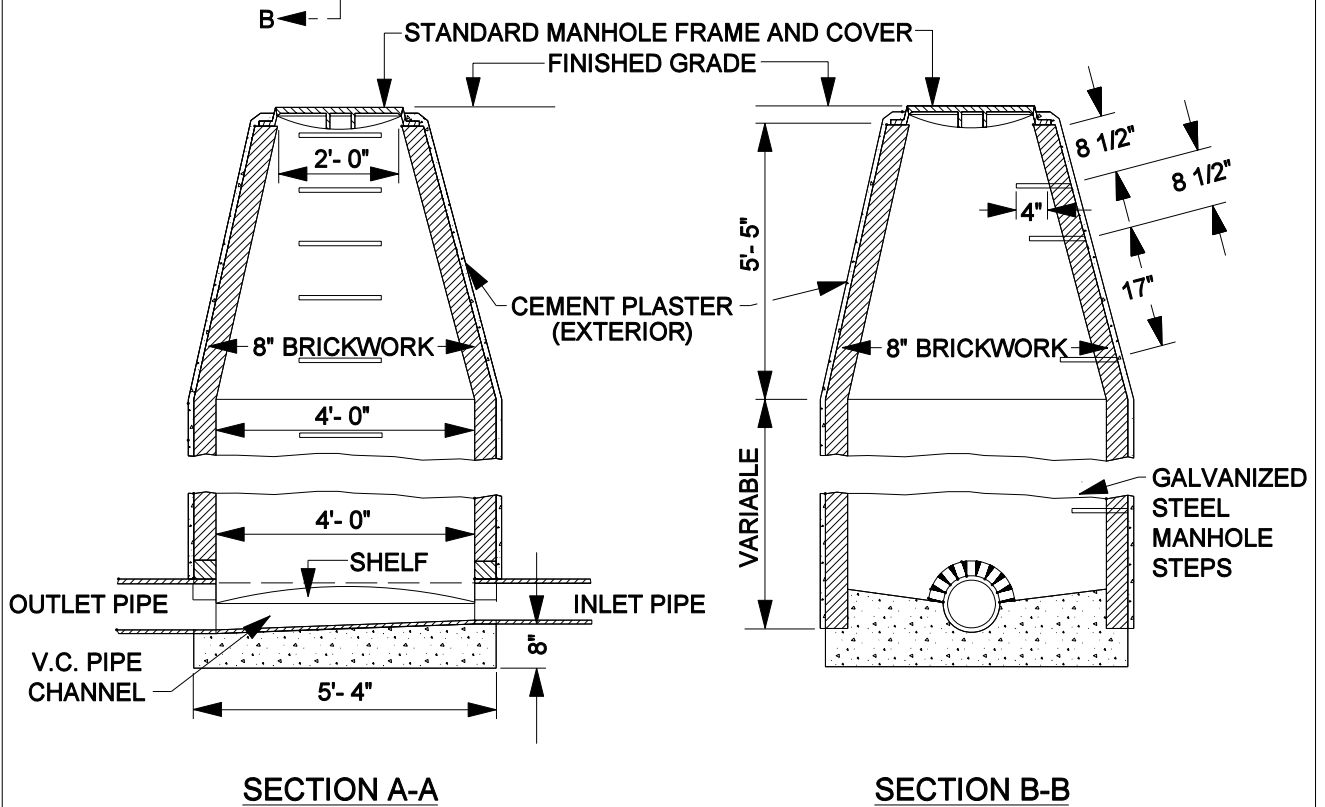


**NOTES:**

1. AT INLETS AND OUTLETS TURN BRICK ARCH OVER PIPE.
2. THE LOWEST STEP SHALL BE NOT MORE THAN 24" ABOVE THE SHELF.
3. FOR PIPE 15" OR LESS THE CHANNEL SHALL BE 2/3 OF THE PIPE DIAMETER AND FULL PIPE DIAMETER FOR PIPE 18" OR MORE.
4. CONCRETE TO BE CLASS "A".



**NOT TO SCALE**

APPROVED BY:					COUNTY OF RIVERSIDE				
DATE: 11/15/04					<h2 style="margin: 0;">SEWER MANHOLE</h2>				
DIRECTOR OF TRANSPORTATION GEORGE A. JOHNSON, RCE 42328									
REVISIONS	REV.	BY:	APR'D	DATE	REV.	BY:	APR'D	DATE	STANDARD NO. 604
8-71	1				4				
	2				5				
	3				6				