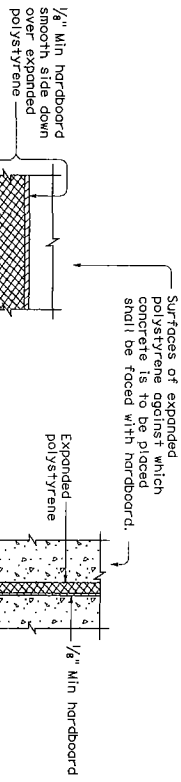
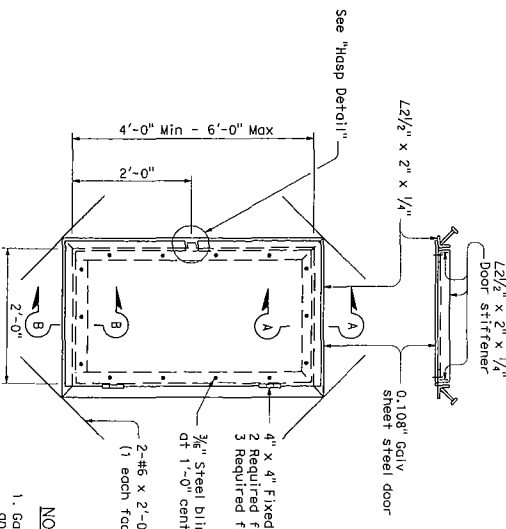


DIST	COUNTY	ROUTE	POST MILES	SHEET NO.	TOTAL SHEETS
REGISTERED CIVIL ENGINEER MAY 1, 2006 ELMAS LABORATORY DATE No. 53119 The State of California or its officers or agents shall not be responsible for the accuracy or completeness or distribution outside of this state. To get to the Collins web site go to <a href="http://www.dgs.gov">http://www.dgs.gov</a>					



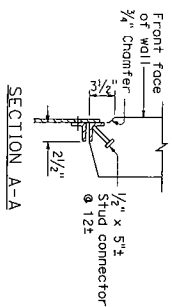
BRIDGE DETAIL 13-1  
PROTECTION OF  
HORIZONTAL POLYSTYRENE

BRIDGE DETAIL 13-2  
PROTECTION OF  
VERTICAL POLYSTYRENE

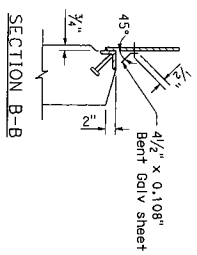


- NOTES:
1. Galvanize frame assemblies and door stiffener angles after welding and fabrication.
  2. Attach door stiffener angles and bent sheet to steel door with blind rivets.

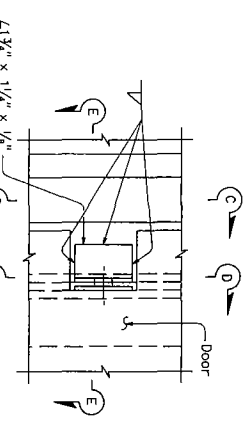
BRIDGE DETAIL 13-3  
ACCESS DOOR



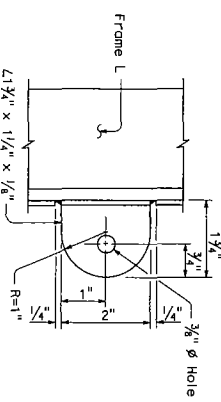
SECTION A-A



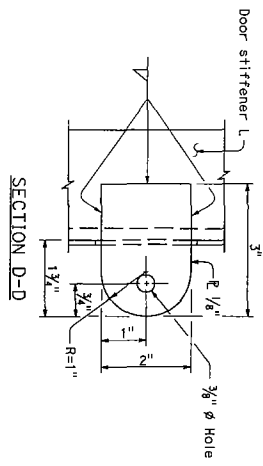
SECTION B-B



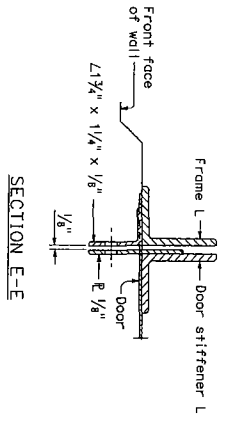
ELEVATION



SECTION C-C



SECTION D-D



SECTION E-E

HASP DETAIL

STATE OF CALIFORNIA  
DEPARTMENT OF TRANSPORTATION  
**BRIDGE DETAILS**  
NO SCALE