

DIST.	COUNTY	ROUTE	POST MILES TOTAL PROJECT	SHEET NO.	TOTAL SHEETS

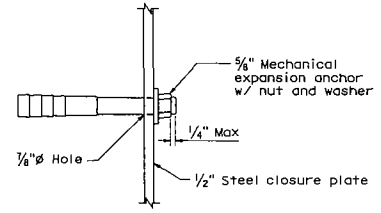
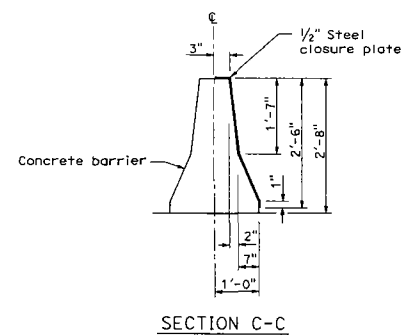
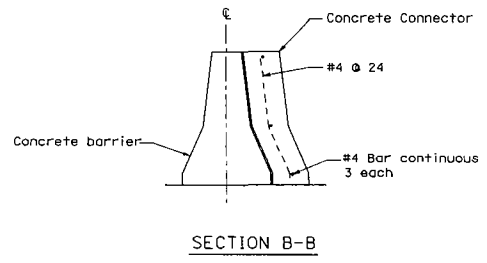
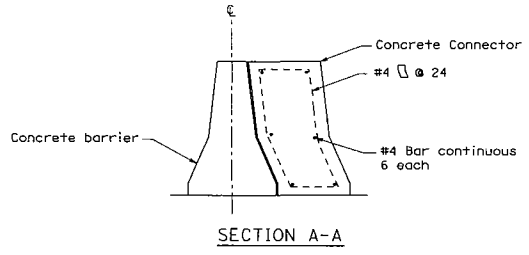
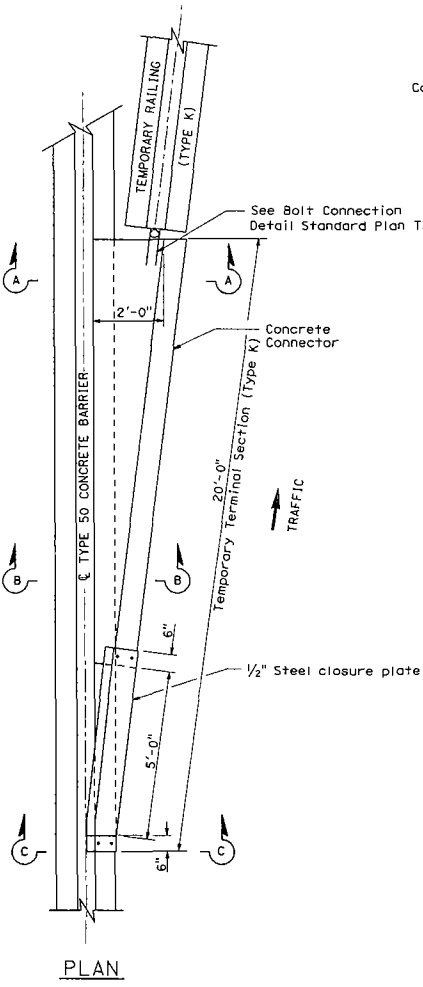
*Randell D. Hiatt*  
REGISTERED CIVIL ENGINEER

May 1, 2006  
PLANS APPROVAL DATE

REGISTERED PROFESSIONAL ENGINEER  
No. CS0200  
Exp. 6-30-07  
CIVIL  
STATE OF CALIFORNIA

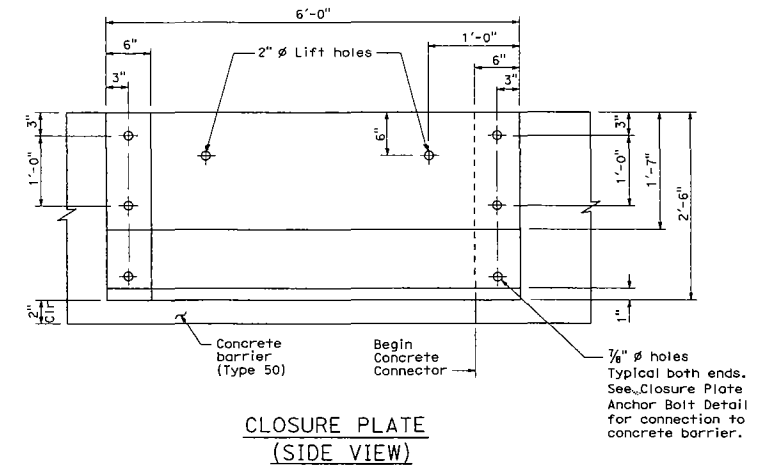
The State of California or its officers or agents shall not be responsible for the accuracy or completeness of electronic copies of this plan sheet.

To get to the Caltrans web site, go to: <http://www.dtd.ca.gov>



CLOSURE PLATE ANCHOR BOLT DETAIL

- NOTES:
1. If lifting holes are used with the concrete connector, they shall conform to the lifting hole details shown on Standard Plan T3.
  2. Paint closure plate white.
  3. When the temporary terminal section (Type K) is no longer required and is to be removed, the anchor bolts connecting the closure plate and the barrier shall be removed or cut flush with the face of the concrete barrier. If the anchor bolts are removed, the resulting holes shall be filled with grout.



CLOSURE PLATE (SIDE VIEW)

STATE OF CALIFORNIA  
DEPARTMENT OF TRANSPORTATION

**TEMPORARY TERMINAL SECTION (TYPE K)**

NO SCALE

T5

2006 STANDARD PLAN T5