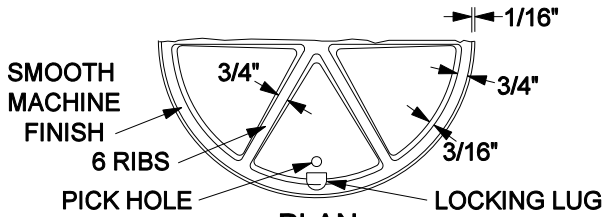
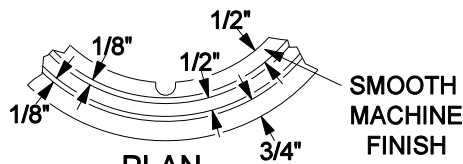


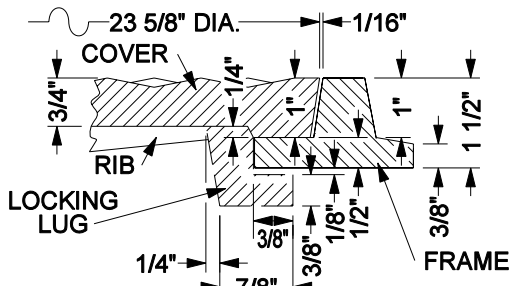
**PLAN
TOP OF COVER**



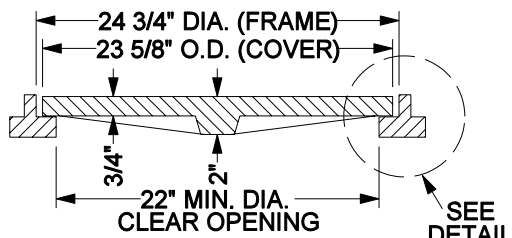
**PLAN
BOTTOM OF COVER**



**PLAN
PORTION OF FRAME**



DETAIL "A"

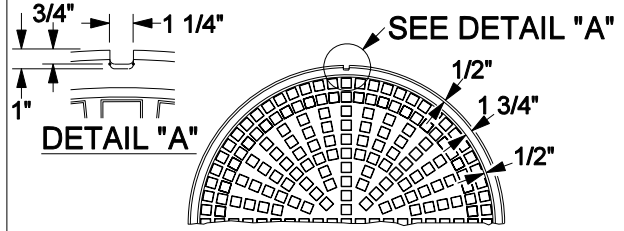


**SECTION
FRAME AND COVER**

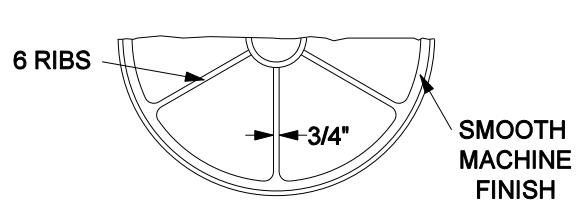
PARKWAY

NOT TO SCALE

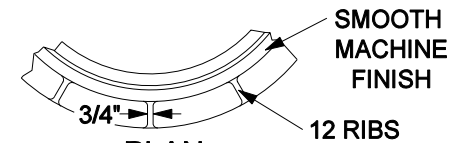
TOTAL WEIGHT - APPROX. 130 LBS.
ALL METAL TO BE GALVANIZED.



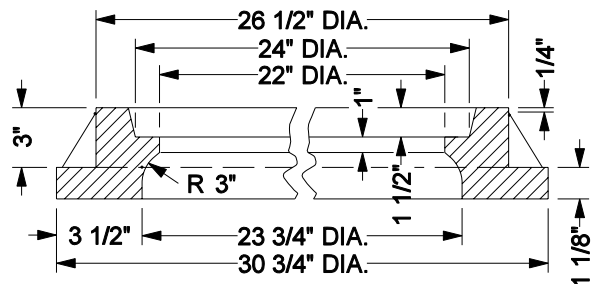
**PLAN
TOP OF COVER**



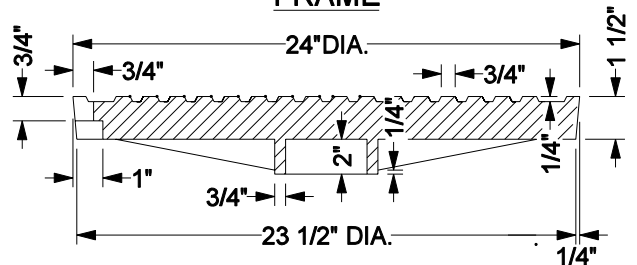
**PLAN
BOTTOM OF COVER**



**PLAN
PORTION OF FRAME**



**SECTION
FRAME**



**SECTION
COVER**

ROADWAY

TOTAL WEIGHT - APPROX. 380 LBS.

APPROVED BY:

DATE: 11/15/04

DIRECTOR OF TRANSPORTATION
GEORGE A. JOHNSON, RCE 42328

REVISIONS	REV.	BY:	APR'D	DATE	REV.	BY:	APR'D	DATE
8-71	1				4			
	2				5			
	3				6			

COUNTY OF RIVERSIDE

**MANHOLE FRAMES
AND COVERS**

STANDARD NO. 608