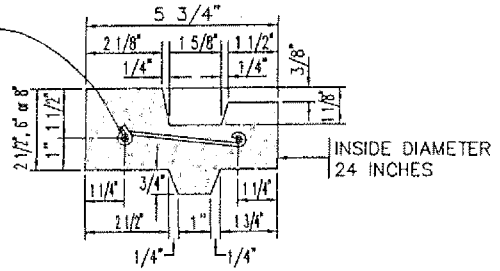


VERTICAL SECTION
OF PLAIN CONCRETE
ECCENTRIC MANHOLE SHAFT

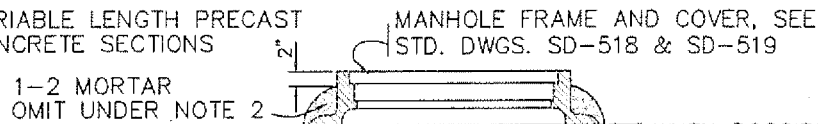
NOTES:

1. ALL JOINTS SHALL BE FILLED WITH 1-2 MORTAR AND NEATLY POINTED OR WIPED INSIDE OF SHAFT.
2. STEPS SHALL BE 3/4 INCH ROUND GALVANIZED STEEL PER STANDARD DRAWING SD-506. TOP STEP SHALL BE PLACED DIRECTLY BENEATH THE MANHOLE COVER FRAME. WIDTH OF ALL STEPS SHALL BE 14 INCHES BETWEEN LEG CENTERS. EXCEPT WHERE SHOWN OTHERWISE, SPACING OF STEPS IN SHAFT SHALL BE 16 INCHES ON CENTER.
3. ECCENTRIC MANHOLE SHAFT, REDUCER, AND RINGS MINIMUM THICKNESS SHALL BE 6 INCHES. THE CONCRETE USED SHALL BE CLASS "3".

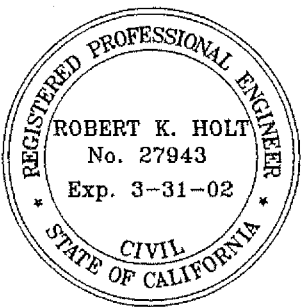
2 1/2 INCH RINGS SHALL BE REINFORCED WITH TWO 1/4" ROUND STEEL HOOPS; 6 INCH AND 8 INCH RINGS SHALL BE REINFORCED WITH FOUR HOOPS, TIED WITH #14 A.S. & W. GAUGE WIRE 8 INCHES ON CENTERS



CROSS SECTION
OF REINFORCED
CONCRETE RING



VERTICAL SECTION
OF REINFORCED CONCRETE
ECCENTRIC MANHOLE SHAFT



APPROVED: PUBLIC WORKS DIRECTOR

James W. Rodkey, Jr. DATE 9/7/00
JAMES W. RODKEY, JR.

APPROVED: CITY ENGINEER
Robert K. Holt DATE 8/31/00
ROBERT K. HOLT, P.E.

CITY OF
BLYTHE

PRE CAST
MANHOLE SHAFT

STANDARD DRAWING NO. SD-514

REVISION BY DATE