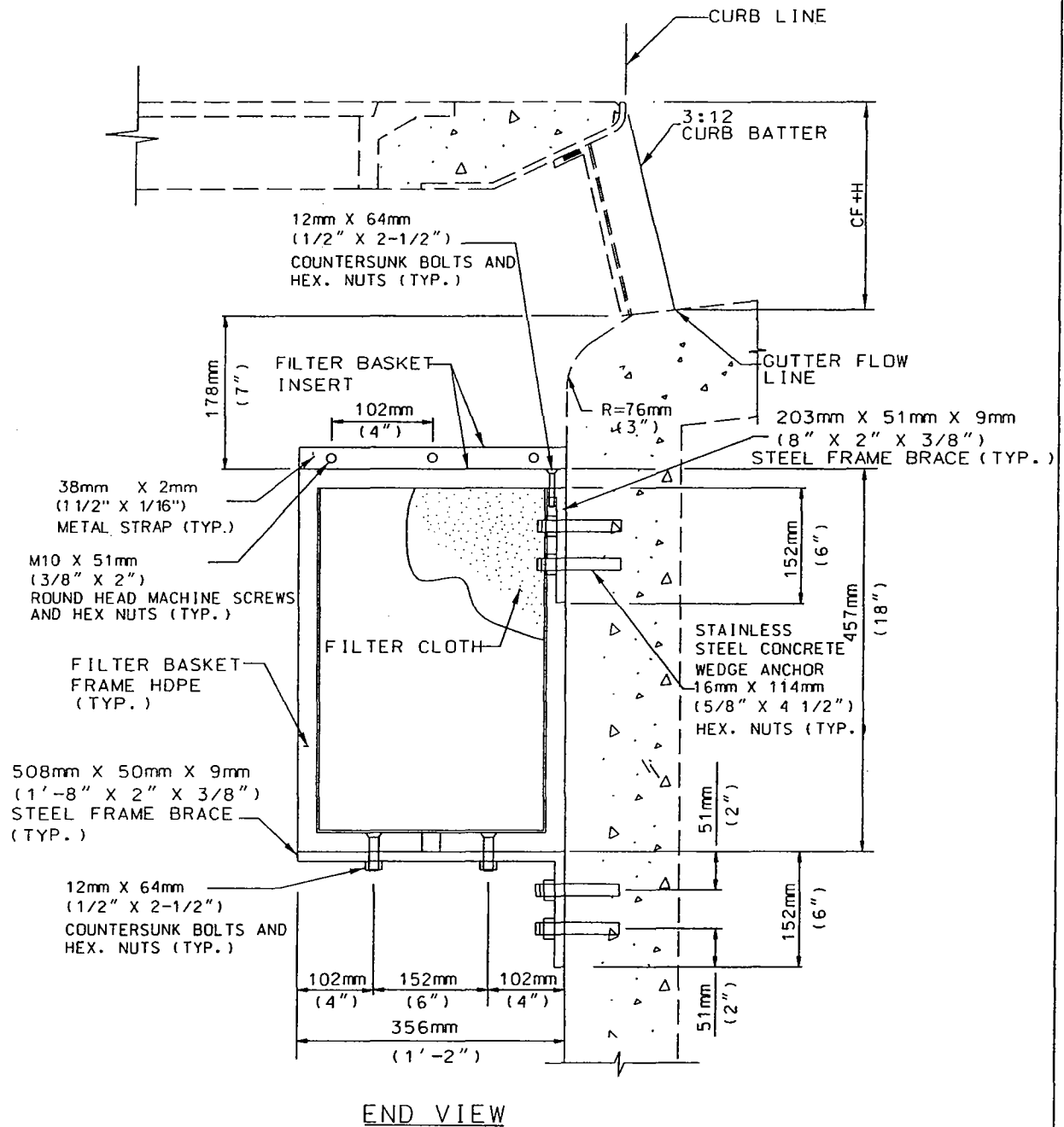


FILTER BASKET ASSEMBLY



LOS ANGELES COUNTY DEPARTMENT OF PUBLIC WORKS

CATCH BASIN FILTER BASKET
ASSEMBLY AND INSERT

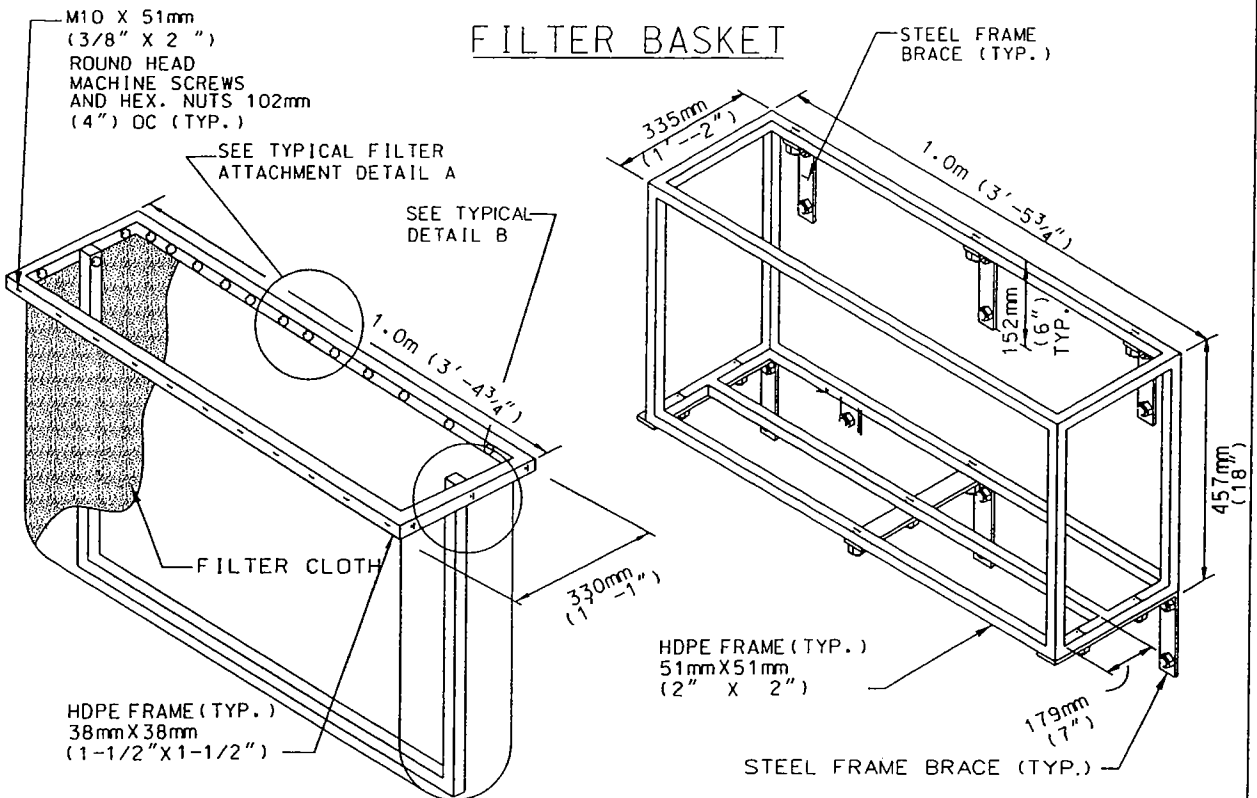
STANDARD PLAN
WQ 385

APPROVED _____

DIRECTOR OF PUBLIC WORKS

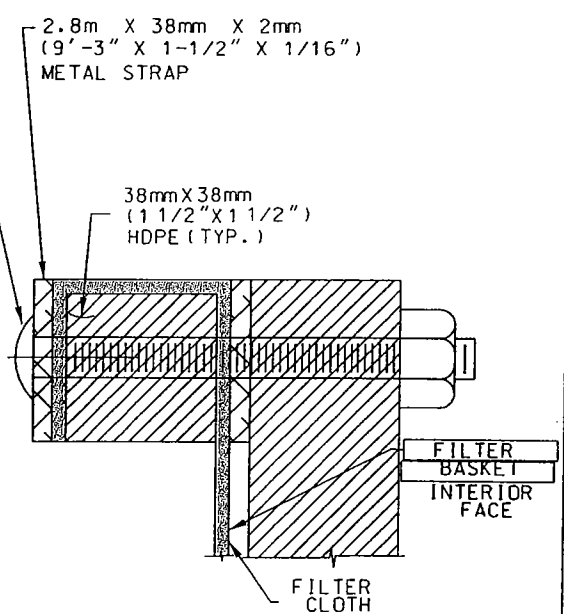
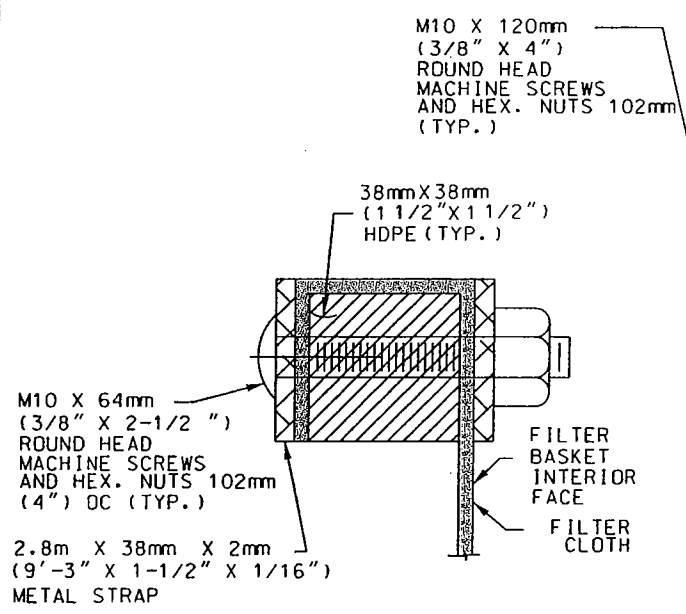
DATE _____

SHEET 1 OF 3



FILTER BASKET INSERT

FILTER BASKET FRAME



DETAIL A

DETAIL B

TYPICAL FILTER ATTACHMENT DETAIL

TYPICAL FILTER BRACE ATTACHMENT DETAIL

LOS ANGELES COUNTY DEPARTMENT OF PUBLIC WORKS

CATCH BASIN FILTER BASKET ASSEMBLY AND INSERT

STANDARD PLAN WQ 385

APPROVED

DIRECTOR OF PUBLIC WORKS

DATE

SHEET 2 OF 3

NOTES:

GENERAL

1. ALL METAL PARTS SHALL BE STAINLESS STEEL ASTM 316, INCLUDING FILTER ATTACHMENT STRAP, FILTER BASKET FRAME SUPPORTS, AND ALL NUTS, BOLTS, AND SCREWS UNLESS OTHERWISE SPECIFIED.
2. DIMENSIONS SHOWN ON THIS PLAN FOR METRIC AND ENGLISH UNITS ARE NOT EXACT EQUAL VALUES. IF METRIC VALUES ARE USED, ALL VALUES USED FOR CONSTRUCTION SHALL BE METRIC VALUES. IF ENGLISH UNITS ARE USED, ALL VALUES USED FOR CONSTRUCTION SHALL BE ENGLISH UNITS.

FILTER BASKET FRAME

3. HIGH-DENSITY POLYETHYLENE (HDPE) MATERIAL FOR THE FILTER BASKET FRAME SHALL COMPLY WITH SECTIONS 207-19.2, 500-1.3.1, AND 500-1.3.2 OF THE STANDARD SPECIFICATIONS FOR PUBLIC WORKS CONSTRUCTION. FABRICATION PERMITTED FOR MITERED BUTT FUSION.

FILTER BASKET INSERT

4. FILTER MATERIAL SHALL BE A NONWOVEN GEOTEXTILE AND SHALL COMPLY WITH APPLICABLE REQUIREMENTS OF SECTION 213-2, GEOSYNTHETICS, OF THE STANDARD SPECIFICATIONS FOR PUBLIC WORK CONSTRUCTION. THE FILTER PHYSICAL PROPERTIES SHALL MEET THE FOLLOWING REQUIREMENTS:

PROPERTY	TEST METHOD	VALUE
UNIT WEIGHT	ASTM D-5261	405 g/m ² (12 OZ/YD ²)
UV RESISTANCE	ASTM D-4355 % RETAINED @ 500 HOURS	70%
GRAB TENSILE STRENGTH	ASTM D-4632	1512 N (340 LBS)
GRAB ELONGATION	ASTM D-4632	50%
PUNCTURE STRENGTH	ASTM D-4833	1240 N (280 LBS)
MULLEN BURST	ASTM D-3786	4480 KPa (650 psi)
TRAPEZOIDAL TEAR	ASTM D-4533	600 N (135 LBS)
APPARENT OPENING SIZE	ASTM D-4751	0.106 mm (0.0042 IN.)
PERMITIVITY	ASTM D-4491	1.0 SEC-1
PERMEABILITY	ASTM D-4491	0.40 CM/SEC
WATER FLOW RATE	ASTM D-4491	3665 L/MIN/m ² (90 GPM/FT ²)

5. GEOTEXTILE TIES USED TO SECURE THE FILTER CLOTH TO THE FILTER BASKET FRAME SHALL BE A NONWOVEN GEOTEXTILE MEETING THE REQUIREMENTS OF THE FILTER MATERIAL FOR UV RESISTANCE AND GRAB TENSILE STRENGTH SPECIFIED IN NOTE 4. THE CONTRACTOR SHALL SUBMIT THE METHOD OF ATTACHING THE TIES TO THE FILTER MATERIAL TO THE AGENCY FOR REVIEW AND ACCEPTANCE. SEE SPECIAL PROVISIONS.

DESIGN DATA:

HIGH DENSITY POLYETHYLENE (HDPE)

FS = 6.9 MPa (1000 psi) E = 1000 MPa (146 ksi)

LOS ANGELES COUNTY DEPARTMENT OF PUBLIC WORKS

CATCH BASIN FILTER BASKET
ASSEMBLY AND INSERT

STANDARD PLAN
WQ 385

APPROVED

DIRECTOR OF PUBLIC WORKS

DATE

SHEET 3 OF 3