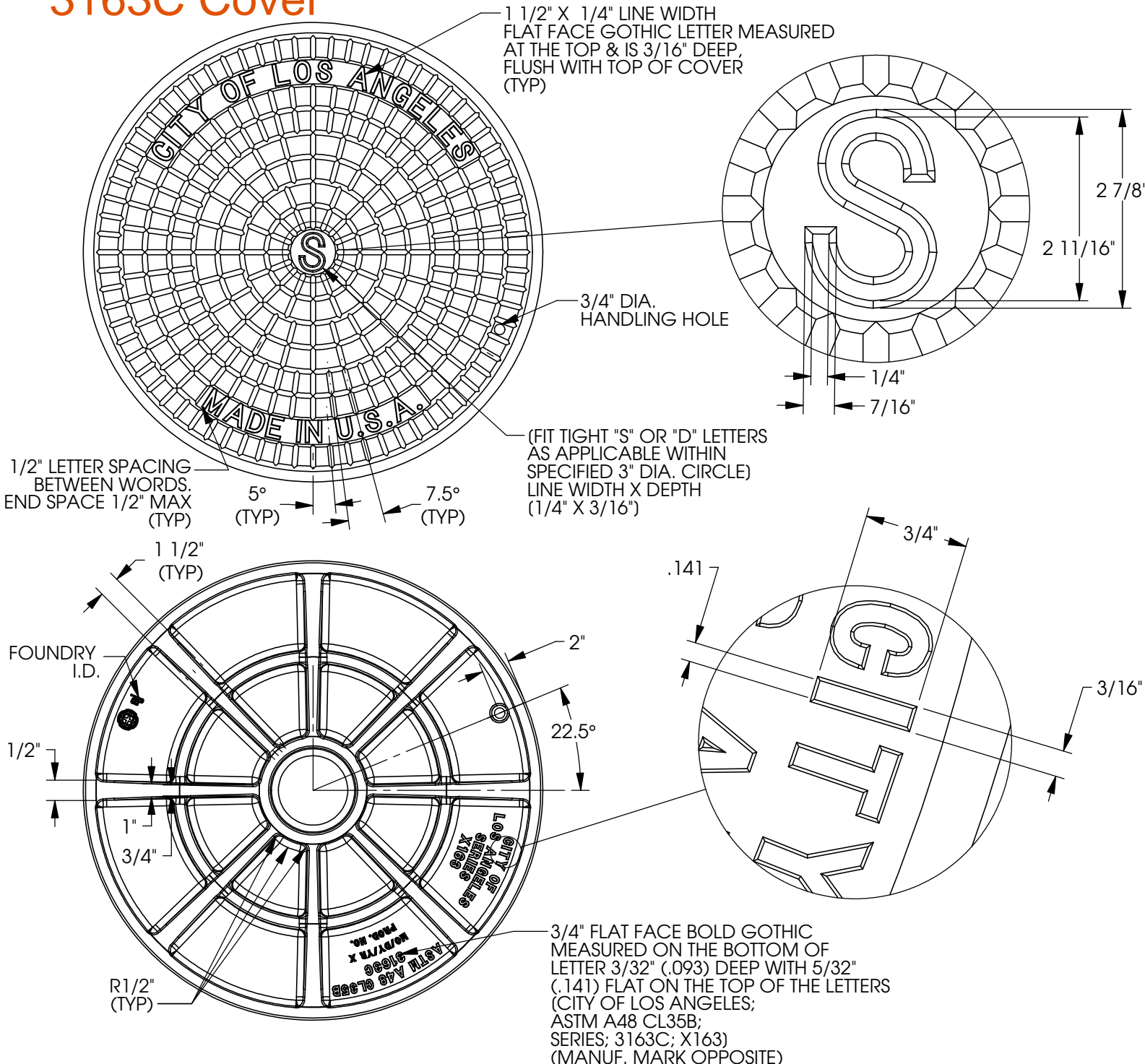


3163C Cover



Product Number

00316375

Design Features

- Materials
Gray Iron (CL35B)
- Design Load
Heavy Duty
Proof Load Tested to 53,200 LBS.
- Open Area
n/a
- Coating
Asphaltic Coated
- √ Designates Machined Surface

Weight

MIN. 305 LBS.
MAX. 335 LBS.

Certification

- ASTM A48
-
- Country of Origin: USA

Manufacturing Facility

ARDMORE, OK., USA

Fabrication Inspection
Required.

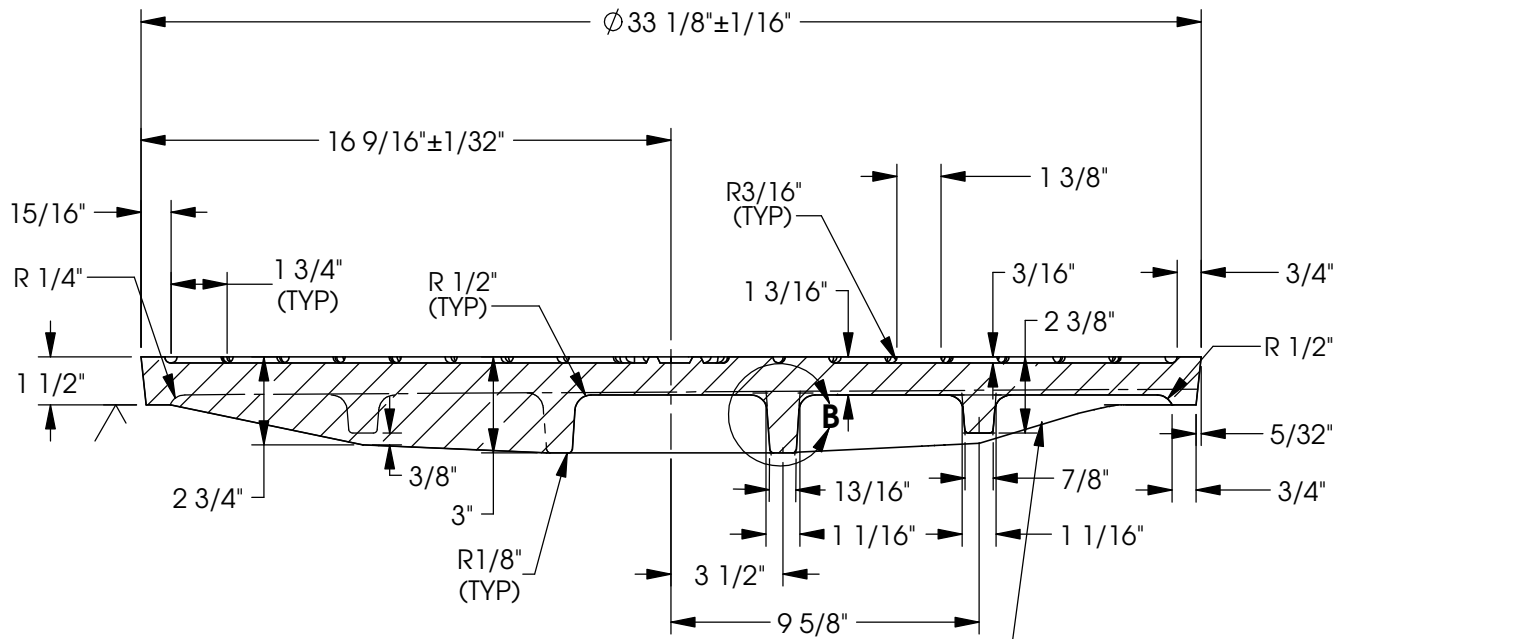
Drawing Revision

11/18/2011 Designer: SMM
12/10/2013 Revised By: MAH

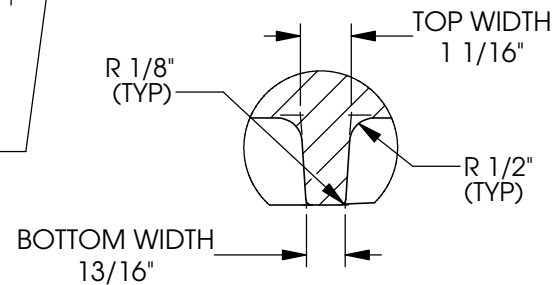
Contact

800 626 4653
ejco.com

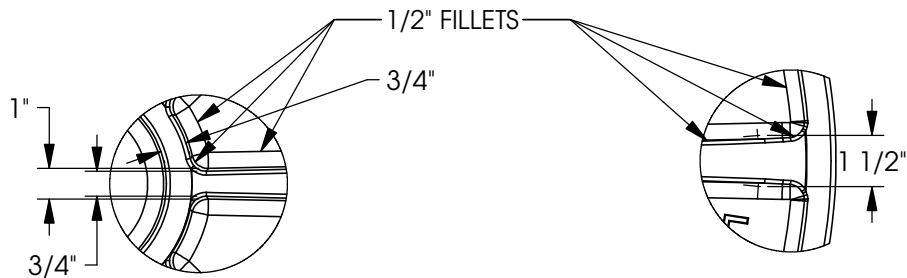
3163C Cover



SECTION A-A
 NOTE: RIGHT SIDE OF CROSS SECTION A-A IS CUT BETWEEN RIBS SHOWING THE SEAT PROFILE, SEE LEFT SIDE OF SECTION A-A FOR BEGINNING OF CROSS RIB



DETAIL B



RIB VIEW DETAIL

RIB VIEW DETAIL

Product Number

00316375

Design Features

- Materials
Gray Iron (CL35B)
- Design Load
Heavy Duty
Proof Load Tested to 53,200 LBS.
- Open Area
n/a
- Coating
Asphaltic Coated
- √ Designates Machined Surface

Weight

MIN. 305 LBS.
 MAX. 335 LBS.

Certification

- ASTM A48
-
- Country of Origin: USA

Manufacturing Facility

ARDMORE, OK., USA

Fabrication Inspection
 Required.

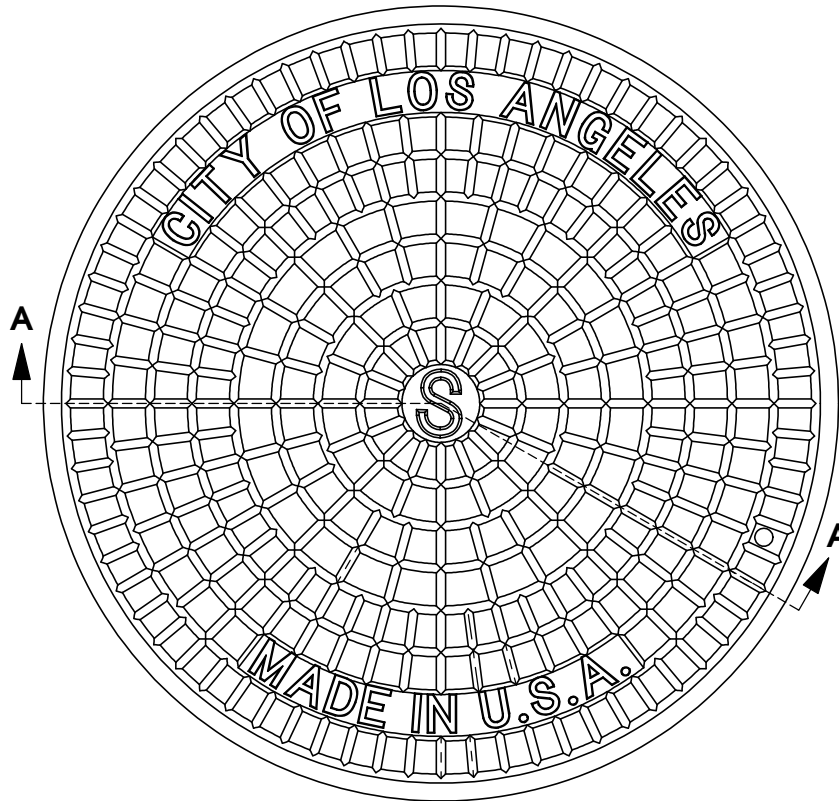
Drawing Revision

11/18/2011 Designer: SMM
 12/10/2013 Revised By: MAH

Contact

800 626 4653
 ejco.com

3163C Cover



Product Number

00316375

Design Features

- Materials
Gray Iron (CL35B)
- Design Load
Heavy Duty
Proof Load Tested to 53,200 LBS.
- Open Area
n/a
- Coating
Asphaltic Coated
- √ Designates Machined Surface

Weight

MIN. 305 LBS.
MAX. 335 LBS.

Certification

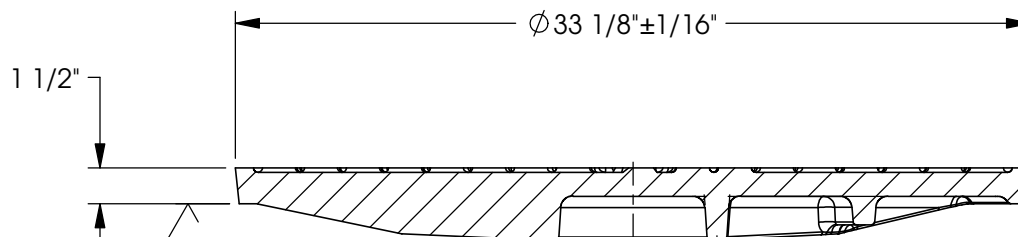
- ASTM A48
-
-
- Country of Origin: USA

Manufacturing Facility

ARDMORE, OK., USA

Fabrication Inspection
Required.

SEE DETAIL VIEWS FOR ALL DIMENSIONS AND SPEC. INFORMATION



SECTION A-A

Drawing Revision

11/18/2011 Designer: SMM
12/10/2013 Revised By: MAH

Contact

800 626 4653
ejco.com