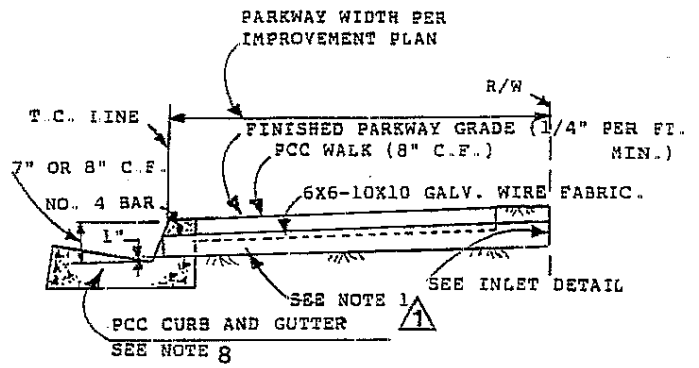
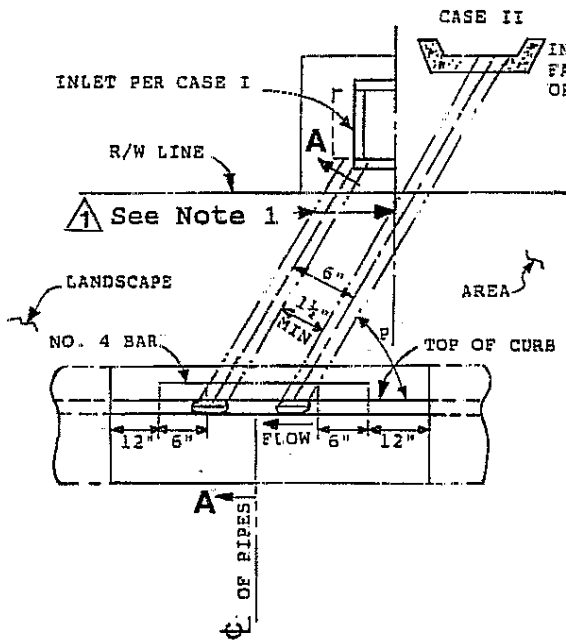


**SECTION A-A**

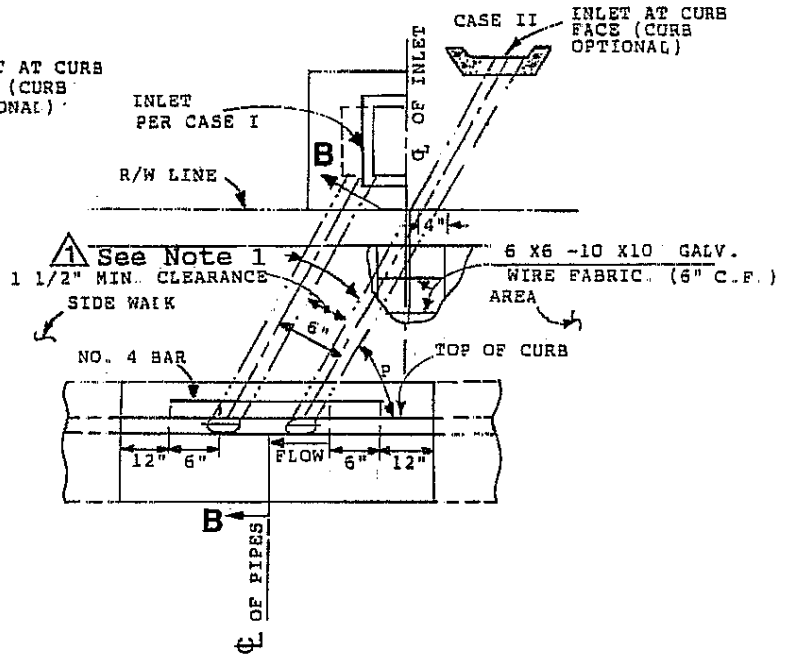


**SECTION B-B**



**PARKWAY DRAIN PLAN**

ALTERNATE 1 (NO SIDEWALK)



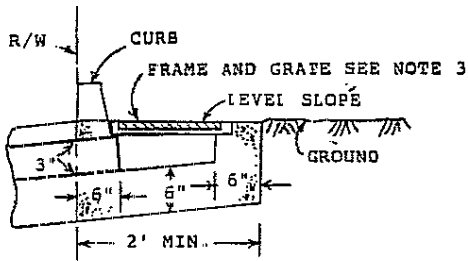
**PARKWAY DRAIN PLAN**

ALTERNATE 2 (SIDEWALK)

\*

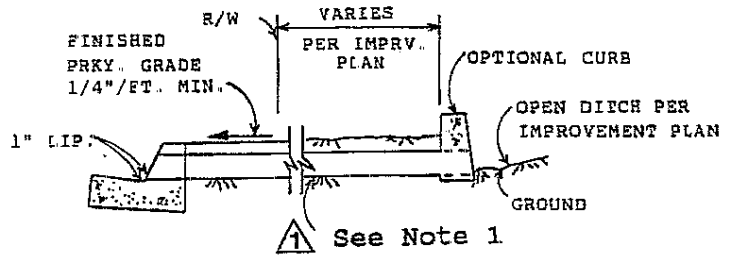
See standard drawing 320 B for notes and inlet details.

APPROVED <i>Ray Wellington</i> 1-28-89			CITY OF CHINO	
CITY ENGINEER		DATE	PUBLIC WORKS DEPARTMENT	
DATE	REVISION	BY	STANDARD DRAWING	No.
7/15/93	REVISED NOTES $\Delta$	<i>DBB</i>	<b>PARKWAY CULVERT</b> <b>TYPE "C"</b>	<b>320</b> <b>A</b>



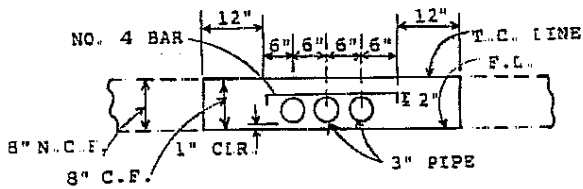
**CASE I INLET**

DROP INLET CATCH BASIN SECTION

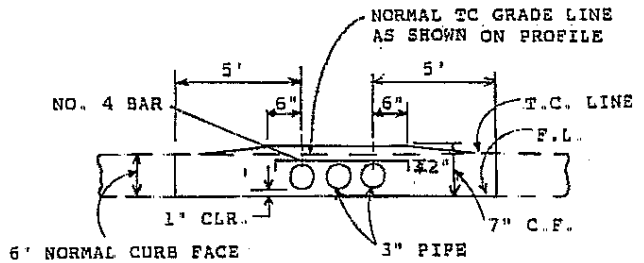


**CASE II INLET**

OPEN DITCH



**CURB PROFILE**



**CURB PROFILE**

**NOTES:**

1. Up to 3 pipes, may be used to provide the required flow cross-section. Pipe shall be 3" or 4" in diameter ductile or cast iron per AWWA C151 (ANSI A21.51). In residential designs where only a single, 3" pipe is required, schedule 80 PVC may be used where approved by City Engineer.  $\Delta$
2. The pipe at the outlet in the curb face shall be epoxied to provide a smooth, watertight joint.
3. Frame and grate shall be 14" X 24" cast iron, Alhambra Foundry A-2422 or pre-approved equal.
4. The inlet case, dimensions and elevations at the curb and gutter shall be specified on the improvement plan.
- $\Delta$  5. Curb coring shall require approval of the City Engineer.
6. Angle P shall be a maximum of 45°, or unless approved by the City Engineer.
7. Sidewalk shall be removed between score lines.
8. Type, dimensions and elevations of P.C.C. curb and gutter per the engineering plans.

APPROVED <i>Key Williams</i> 1-28-89			CITY OF CHINO	
CITY ENGINEER			PUBLIC WORKS DEPARTMENT	
DATE	REVISION	BY	STANDARD DRAWING	No.
7/15/93	REVISED NOTES $\Delta$	RFB	<b>PARKWAY CULVERT TYPE "C" DETAILS AND NOTES</b>	<b>320 B</b>