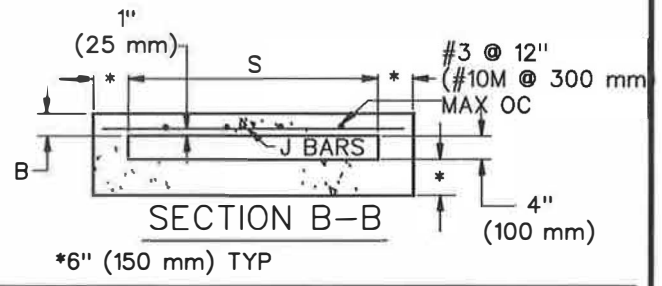
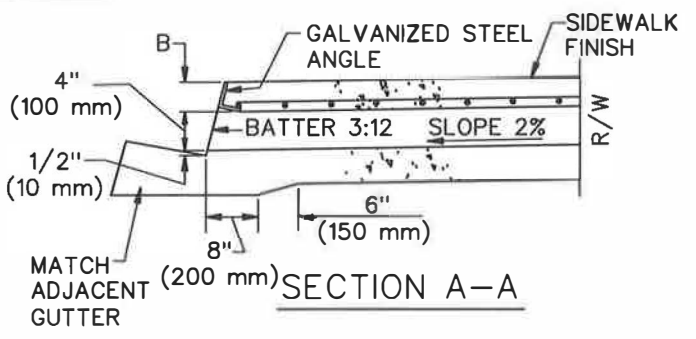


S	J BAR SPACING	ANCHORS	NOTE
12" (300 mm)	7" (180 mm)	2	9
18" (450 mm)	7" (180 mm)	2	9
24" (600 mm)	7" (180 mm)	2	9
30" (750 mm)	7" (180 mm)	2	9
36" (900 mm)	7" (180 mm)	3	9
42" (1050 mm)	6" (150 mm)	3	9
48" (1200 mm)	5" (125 mm)	3	9
54" (1350 mm)	6-1/2" (165 mm)	3	10
60" (1500 mm)	5" (125 mm)	3	10
66" (1650 mm)	4" (100 mm)	3	10
72" (1800 mm)	3-1/2" (90 mm)	3	10



STANDARD PLANS FOR PUBLIC WORKS CONSTRUCTION

PROMULGATED BY THE  
PUBLIC WORKS STANDARDS INC.  
GREENBOOK COMMITTEE  
1993  
REV. 1996, 2009, 2021

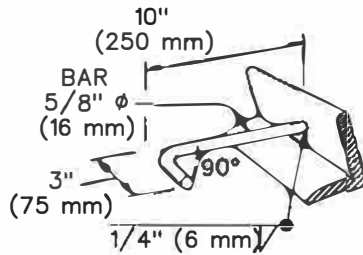
PARKWAY DRAIN

USE WITH STANDARD SPECIFICATIONS FOR PUBLIC WORKS CONSTRUCTION

STANDARD PLAN

151-3

SHEET 1 OF 2



### DETAIL OF ANCHOR

#### NOTES

1. FLOOR OF BOX SHALL BE TROWLED SMOOTH.
2. IF THE TOE OF SLOPE IS ALLOWED WITHIN THE R/W, INLET TYPE 1 BEGINS AT THE TOE RATHER THAN AT THE R/W LINE.
3. FOR OPEN DITCH (TYPE 2), THE 24" (600 mm) EXTENSION BEYOND THE R/W LINE IS NOT REQUIRED WHEN BACK OF WALK IS 24" (600 mm) OR MORE FROM THE R/W LINE; HOWEVER, THE PARKWAY DRAIN SHALL EXTEND TO THE R/W LINE IN ANY EVENT.
4. TOP OF INLET STRUCTURE (TYPE 1 & 2) SHALL BE FLUSH WITH ADJACENT SURFACE WHERE PRACTICAL.
5. A HEADED STEEL STUD 5/8" x 6-3/8" WITH A 1" HEAD (16 x 160 mm, 25 mm HEAD) ATTACHED BY A FULL PENETRATION BUTT WELD MAY BE USED AS AN ALTERNATE ANCHOR.
6. NORMAL CURB FACE AT POINT M AND Q. CURB FACE IS B + 5" (125 mm) AT POINT N AND P.
7. THE 3" (75 mm) LEG OF THE 5/8" (16 mm) DIA ANCHORS SHALL BE PARALLEL TO THE TOP OF SIDEWALK.
8. J BARS ARE #3 (#10M).
9. FOR S = 48" (1200 mm) AND LESS, B = 3" (75 mm).  
USE 2-1/2" x 2" x 3/8" (64 x 51 x 9.5 mm) GALVANIZED STEEL ANGLE.
10. FOR S = 54" (1350 mm) OR MORE, B = 4" (100 mm).  
USE 3-1/2" x 3" x 1/2" (89 x 76 x 12.7 mm) GALVANIZED STEEL ANGLE.
11. ANGLE A EQUALS 90° UNLESS OTHERWISE SPECIFIED.