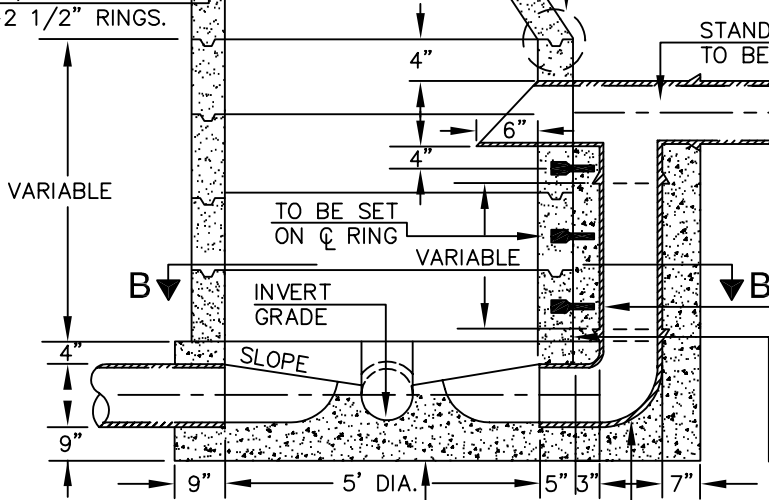


STANDARD CAST IRON ACCESSHOLE  
FRAME & COVER -  
SEE DWG. NO. S4.

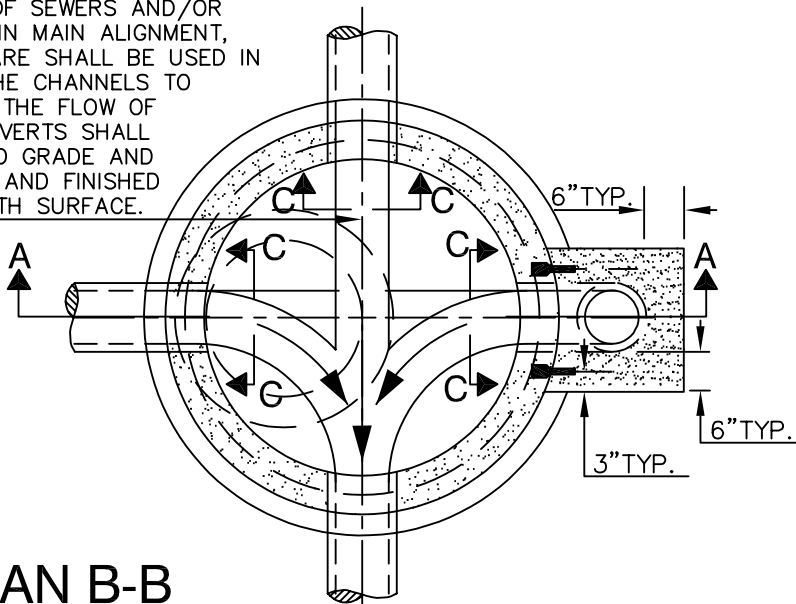
12" WIDE X 6" THICK  
CONCRETE COLLAR  
WITH 3" ASPHALT  
CONCRETE OVERLAY  
(TYPICAL).

ADJUSTING RINGS AS  
REQUIRED. MAX.=11",  
MIN.=5", TOP  
5"=2-2 1/2" RINGS.

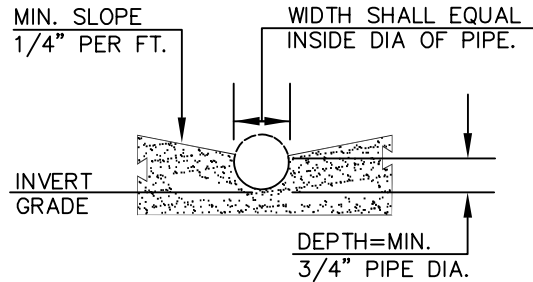


**SECTION A-A**

WHEN ACCESSHOLE FORMS THE  
JUNCTION OF SEWERS AND/OR  
AN ANGLE IN MAIN ALIGNMENT,  
SPECIAL CARE SHALL BE USED IN  
FORMING THE CHANNELS TO  
FACILITATE THE FLOW OF  
SEWAGE. INVERTS SHALL  
BE TRUE TO GRADE AND  
ALIGNMENT AND FINISHED  
WITH SMOOTH SURFACE.



**PLAN B-B**



**SECTION C-C**

STANDARD "T" BRANCH SPIGOT END  
TO BE CUT OFF FLUSH WITH SURFACE.

JOINT WITH "T" BRANCH  
AND FIRST SECTION OF  
PIPE TO BE JOINED PRIOR  
TO INSTALLATION IN ACCESSHOLE.

TWO 3/8"x2 3/4" LAG SCREW  
EXTENSION SHIELDS GALVANIZED  
AND 3/8"x6" LAG SCREWS  
GALVANIZED PER EACH 4 FOOT  
ACCESSHOLE RING AS SHOWN.

CLEAN AND ROUGHEN SURFACE  
RINGS AND APPLY NEAT CEMENT  
PASTE PRIOR TO POURING SUPPLY  
DROP SECTION.

90° PIPE SPIGOT END TO BE CUT  
OFF FLUSH WITH INSIDE SURFACE.

POUR BASE AGAINST  
UNDISTURBED SOIL  
OR 6" MIN. ROCK BASE  
REQUIRED.

**NOTES:**

ALL CAST IN PLACE CONCRETE  
SHALL BE TYPE 564-B-3250.

ALL PIPE IN ACCESSHOLE  
SHALL BE PVC OR VITRIFIED  
CLAY PIPE AND SHALL BE  
INCLUDED AS PART OF  
ACCESSHOLE.

DOUBLE DROP ACCESSHOLE IS  
CONSTRUCTED THE SAME AS  
DROP ACCESSHOLE EXCEPT  
THAT IT HAS TWO DROP  
SECTIONS.

REV.	APPROVED	DATE	CITY OF CARLSBAD	
				6-04
			DROP ACCESSHOLE	
			CITY ENGINEER	DATE
			SUPPLEMENTAL STANDARD NO.	S-2