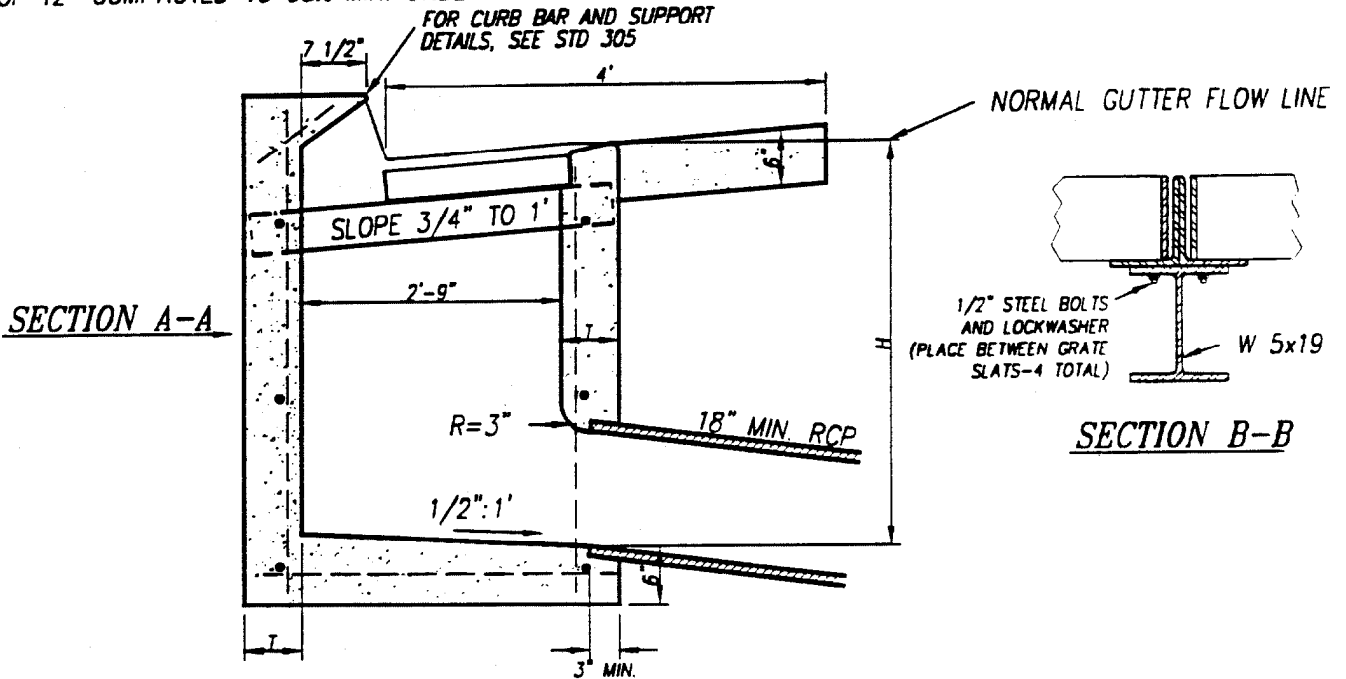


COMPACT BACKFILL TO 90% MIN., WITH THE TOP 12" COMPACTED TO 95% MIN. UNDER PAVING.

* EXPANSION JOINTS



SEE NOTES ON STD 302, SHT 2 OF 2
 NOTE: USE OF THIS STANDARD REQUIRES PRIOR APPROVAL OF CITY ENGINEER

CITY OF RANCHO MIRAGE		STANDARD DETAIL 302 SHT. 1 OF 2
REVISIONS	COMBINATION INLET CATCH BASIN	
	<i>[Signature]</i>	
	APPROVED BY: CITY ENGINEER	
	DATE	



BASIN SHALL HAVE ONE GRATING UNLESS OTHERWISE SPECIFIED ON IMPROVEMENT PLANS. GRATE AND FRAME SHALL BE ALHAMBRA FOUNDRY A-1555 AND A-1557, RESPECTIVELY, OR APPROVED EQUAL. ONLY BICYCLE PROOF GRATES WILL BE ALLOWED.

CONCRETE SHALL BE CLASS 560-C-3250. WHEN THE BASIN IS TO BE CONSTRUCTED WITHIN THE LIMITS OF A PROPOSED SIDEWALK OR IS CONTIGUOUS TO SUCH A SIDEWALK, THE TOP OF THE BASIN SHALL BE POURED MONOLITHIC WITH THE SIDEWALK, USING CLASS 560-C-3250 CONCRETE FOR THE SIDEWALK. THE TOP OF THE CATCH BASIN SHALL BE FINISHED PER SIDEWALK STANDARDS.

CONNECTION PIPES MAY BE PLACED IN ANY POSITION AROUND THE WALLS, PROVIDED THEY POINT IN THE PROPER DIRECTION AND THE POSITION IS OTHERWISE CONSISTENT WITH THE IMPROVEMENT PLAN.

CURVATURE OF THE END-WALLS AT CURB OPENING SHALL BE FORMED BY CURVED FORMS AND SHALL NOT BE MADE BY PLASTERING.

DIMENSIONS:

- GRATE SHALL BE PARALLEL TO PLANE OF GUTTER SLOPE. 3/4" TO 1".
- T = 6" IF H = 8' OR LESS
- T = 8" IF H IS GREATER THAN 8' AND LESS THAN 20'
- H = 3'-6", UNLESS OTHERWISE SPECIFIED ON IMPROVEMENT PLANS
- W = 2'-11 3/8" FOR ONE GRATING. ADD 3'-5 3/8" FOR EACH ADDITIONAL GRATING.

EXPOSED SURFACES OF THE CATCH BASIN SHALL CONFORM IN SLOPE, GRADE, COLOR, FINISH, AND SCORING TO EXISTING IMPROVEMENTS ADJACENT TO THE BASIN. WHERE NO SIDEWALK EXISTS, THE TOP SHALL BE FINISHED TO CONFORM TO STANDARD SIDEWALK SLOPE AND FINISH. WHERE NO CURB EXISTS, THE BATTER OF EXPOSED END WALLS ABOVE THE STREET SURFACE SHALL CONFORM TO BATTER FOR STANDARD CURB.

FLOOR OF BASIN SHALL BE GIVEN A STEEL-TROWELLED FINISH.

OUTLET PIPE SHALL BE TRIMMED TO THE FINAL SHAPE AND LENGTH BEFORE CONCRETE IS POURED.

REINFORCING STEEL SHALL BE NO. 4 DEFORMED BARS. CLEARANCE SHALL BE 1 1/2" FROM INSIDE OF BOX. SPACING IS AS SHOWN IN TOP SLAB AND AT 18" CENTERS IN SIDES OF BOX.

SLOPE OF FLOOR PARALLEL WITH CURB SHALL BE 1:12 UNLESS OTHERWISE SPECIFIED. SLOPE FLOOR FROM ALL DIRECTIONS TO THE OUTLET.

STEPS:

- 3/4" PLAIN ROUND GALVANIZED STEEL STEPS ARE REQUIRED AS FOLLOWS:
- ALHAMBRA FDY. A-3320 OR EQUAL
- IF H IS 3.5' OR LESS, NO STEPS ARE REQUIRED.
- IF H IS MORE THAN 3.5', AND NOT MORE THAN 5', INSTALL ONE STEP 16" ABOVE FLOOR OF BASIN.
- IF H IS MORE THAN 5', INSTALL STEPS 12" APART, WITH THE TOP STEP 6" BELOW THE TOP OF GRATING. ALL STEPS SHALL BE 4" CLEAR FROM THE WALL EXCEPT THE TOP STEP, WHICH SHALL BE 2 1/2" CLEAR FROM THE WALL AND ANCHORED NOT LESS THAN 5" IN WALL OF BASIN.

NOTE: USE OF THIS STANDARD REQUIRES PRIOR APPROVAL OF CITY ENGINEER

CITY OF RANCHO MIRAGE		STANDARD DETAIL 302 SHT. 2 OF 2
REVISIONS	COMBINATION INLET CATCH BASIN NOTES	
APPROVED BY: 5/31/01 CITY ENGINEER DATE		