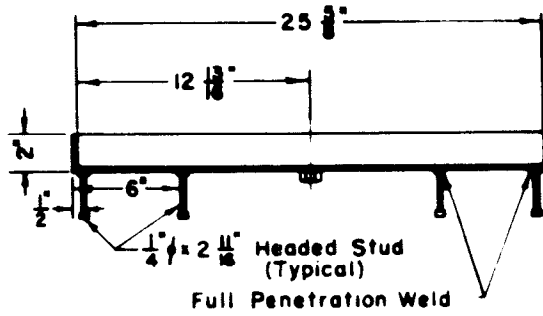
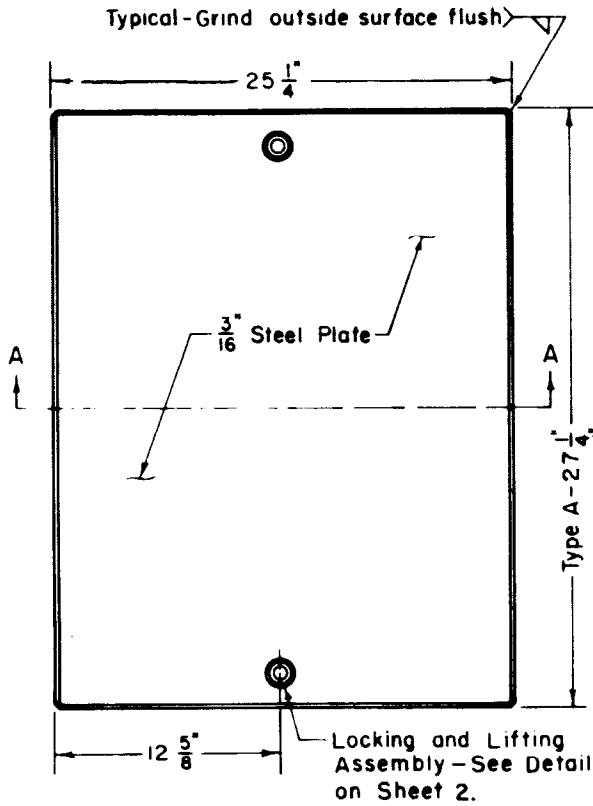


SECTION A-A

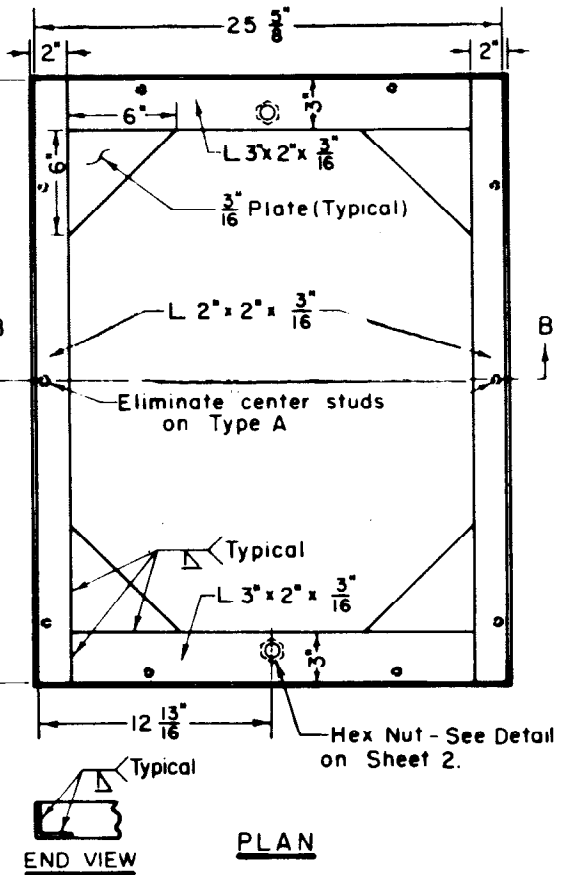


SECTION B-B



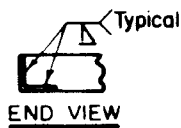
PLAN

COVER DETAIL



PLAN

FRAME DETAIL



END VIEW

BUREAU OF ENGINEERING

DEPARTMENT OF PUBLIC WORKS

CITY OF LOS ANGELES

**CATCH BASIN RECTANGULAR MANHOLE
FRAME AND PAN COVER**

**STANDARD PLAN
S-345-2**

SUBMITTED *April 25, 1990*

[Signature]
ENGINEER OF DESIGN
[Signature]
DEPUTY ENGINEER

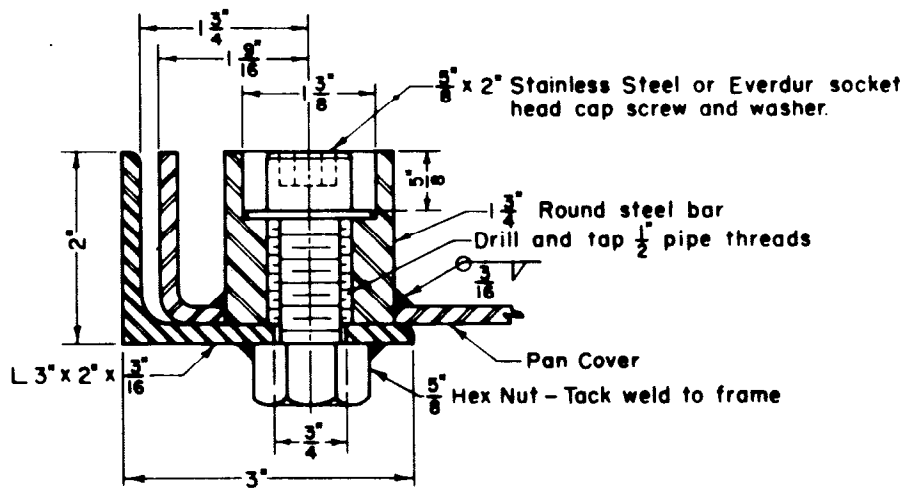
APPROVED *[Signature]* 11-1-1990
CITY ENGINEER



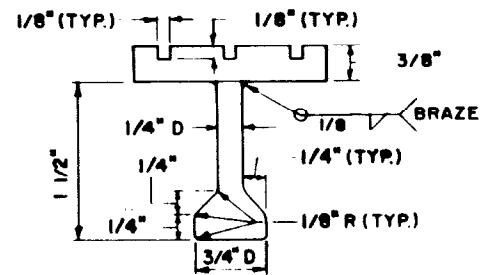
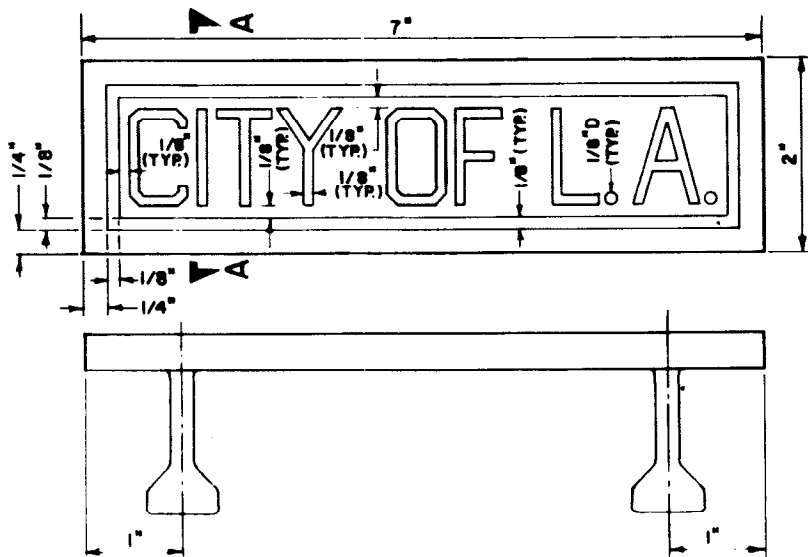
| REVISIONS | |
|-----------|--------------------------|
| NO. | DESCRIPTION |
| 2 | ADDED NOTES 8, 9 AND 10. |
| | |
| | |
| | |
| | |

| SUPERSEDES | REFERENCES |
|------------|------------|
| B-4076 | |
| | |
| | |
| | |

VAULT INDEX NUMBER B-4112



LOCKING AND LIFTING ASSEMBLY



SECTION A-A

IDENTIFICATION PLATE

NOTES

1. FRAME AND COVER SHALL BE TYPE A UNLESS OTHERWISE SPECIFIED.
2. MANHOLE FRAME AND COVER SHALL BE SHOP FABRICATED AS ONE UNIT AND IDENTIFIED AS SUCH.
3. STEEL COVER SHALL BE FORMED FROM ONE PIECE.
4. GALVANIZE ALL EXPOSED METAL PARTS AFTER WELDING IS COMPLETE.
5. PAN COVER SHALL BE FILLED WITH THE SAME MATERIAL AS THE TOP SLAB OF THE CATCH BASIN UNLESS OTHERWISE SPECIFIED.
6. THE IDENTIFICATION PLATE OR PLATES, NOT EXCEEDING FIVE PER PROJECT, MAY BE OBTAINED AT NO COST TO THE CONTRACTOR FROM THE GENERAL SUPERINTENDENT, DEPARTMENT OF PUBLIC WORKS, BUREAU OF SANITATION, WASTEWATER COLLECTION SYSTEMS DIVISION AT 2335 DORRIS PLACE, LOS ANGELES, CA., 90031 UPON PRESENTATION OF A MEMORANDUM SIGNED BY A DISTRICT ENGINEER OF THE BUREAU OF ENGINEERING AUTHORIZING ITS RELEASE. FOR PROJECTS REQUIRING MORE THAN FIVE PLATES, THE CONTRACTOR SHALL BORROW THE CITY'S MASTER AVAILABLE FROM THE CITY ENGINEER AND PRODUCE THE PLATES AT HIS OWN COST.
7. THE IDENTIFICATION PLATE SHALL BE CENTERED IN THE CURB AT THE CENTER LINE OF THE CATCH BASIN AND READ PARALLEL WITH THE CURB AND FACING THE ROADWAY.
- 2/ 8. CASTINGS FOR THE IDENTIFICATION PLATE SHALL BE BRASS CONFORMING TO ASTM B 584, COPPER ALLOY UNS NO. C 83800 (COMMERCIAL RED BRASS). LETTERING AND LINES SHOWN ON THE PLAN SHALL BE NOT LESS THAN 1/8" DEEP AND SHALL BE CAST INTEGRAL WITH THE CASTING. THE FACES AND EDGES OF ALL LETTERING SHALL BE SHARP AND CLEAN AND SHALL BE FREE OF BURRS, CASTING MARKS, AND PROTUBERANCES. THE TOP SURFACE SHALL ALSO BE FREE OF FILING, GRINDING AND OTHER FINISHING MARKS. A FOUNDRY IDENTIFICATION MARK IDENTIFYING THE FABRICATOR SHALL BE LOCATED ON THE BOTTOM OF THE PLATE.
9. FRAMES OR COVERS IMPORTED INTO THE UNITED STATES SHALL BE MARKED ON THE TOP SURFACE WITH THE ENGLISH NAME OF THE COUNTRY OF ORIGIN PRECEDED BY "MADE IN" BY MEANS OF CAST-IN-MOLD LETTERING SIMILAR TO IDENTIFICATION PLATE HEREON. SUCH LETTERING SHALL BE 1 INCH HIGH WITH LINE WIDTH OF 1/8 INCH. ETCHING, DIE STAMPING, ENGRAVING OR WELDING ON OF LETTERS WILL NOT BE ACCEPTED. COUNTRY OF ORIGIN PLATE SHALL BE CENTERED IN THE CURB, 6 INCHES TO THE RIGHT OF THE IDENTIFICATION PLATE.
- 2/ 10. FOR THOSE MANHOLES OR STRUCTURES DESIGNATED AS "PRIVATE" ON THE PLANS OR SPECIFICATIONS THE WORD "PRIVATE" SHALL BE SUBSTITUTED FOR "CITY OF L.A."