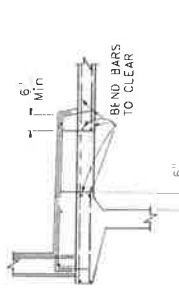
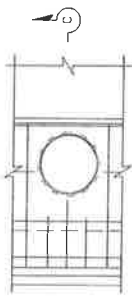


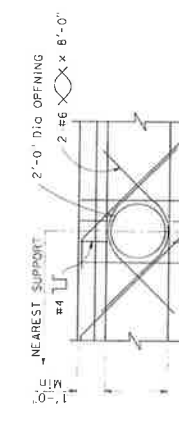
BAR STEP
LADDER RUNG DETAILS
DETAIL U44



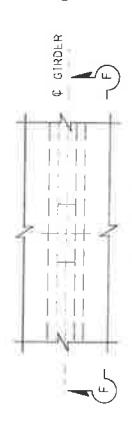
SECTION C-C



PART PLAN
SIDEWALK ACCESS OPENING
DETAIL U42

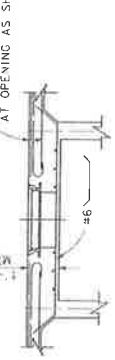


ELEVATION F-F

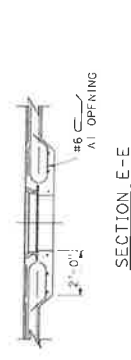


PART PLAN
GIRDER STEM ACCESS OPENING
DETAIL U41

- NOTES:**
1. For exact location of openings see other sheets.
 2. Location and size of manholes may be modified as directed by the Engineer, provided minimum dimensions are maintained.
 3. All reinforcement detailed to be placed in addition to reinforcement shown on other sheets.



SECTION D-D

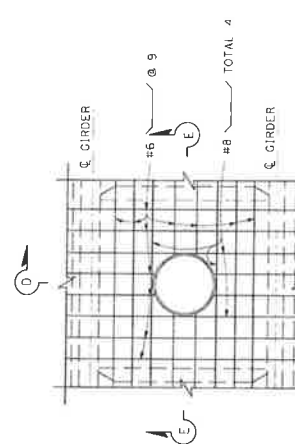


SECTION E-E



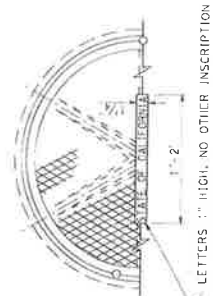
HALF SECTION E-E

- NOTE:**
Where manhole is located adjacent to a diaphragm or abutment, substitute half Section E-E on one side of Section E-E.



PART PLAN

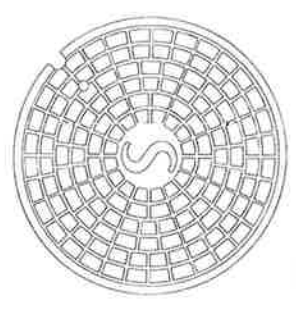
DECK ACCESS OPENING
DETAIL U43



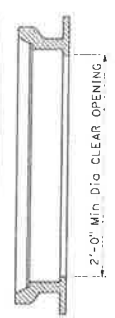
TOP OF MANHOLE FRAME & COVER



SECTION THROUGH FRAME & COVER
MANHOLE FRAME & COVER FOR SIDEWALKS
DETAIL U46



TOP OF MANHOLE COVER



SECTION THROUGH FRAME
NON-ROCKING MANHOLE FRAME & COVER FOR DECKS
DETAIL U45

- NOTES:**
1. Step inserts may be substituted for the standard step detail. Step inserts shall comply with State Industrial Safety requirements.
 2. Covers for use on sewer structures shall bear the letter 'U' on openings for utilities the letter 'U'.

- NOTES:**
1. Frame and cover shall be cast iron.
 2. Cover shall be supplied with bolt down or locking devices.

STATE OF CALIFORNIA
DEPARTMENT OF TRANSPORTATION
UTILITY DETAILS
NO SCALE

B7-11

Return to Table of Contents