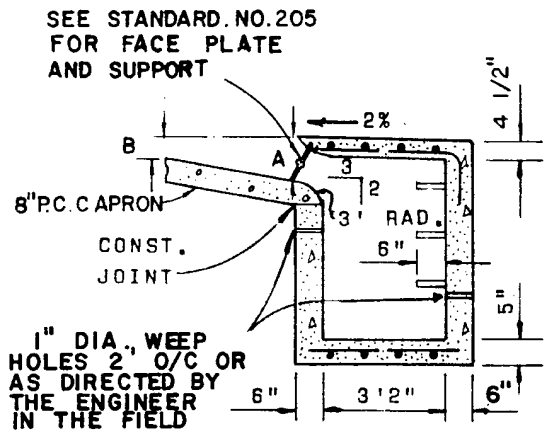


LONGITUDINAL SECTION



CROSS SECTION

	6" CF	8" CF
A	9 1/2"	11 1/2"
B	4"	6"

1. PLACE ON 3/4 INCH DIAMETER SUPPORTING BOLT FOR EVERY 6 FOOT LENGTH OF OPENING, SPACED EVENLY OVER THE ENTIRE OPENING WHERE SIDEWALK EXISTS ADJACENT TO CATCH BASIN. TOP SLAB SHALL BE EXTENDED TO JOIN SIDEWALK.
2. SEE STANDARD 206-0 FOR WALL & FLOOR REINFORCEMENT.
3. LOCAL DEPRESSION SHALL BE 8 INCHES THICK.
4. ALL METAL SHALL BE GALVANIZED AFTER FABRICATION.
5. ALL CONCRETE SHALL BE 560-C-3250.
6. WHEN "W" EXCEEDS 15 FEET, PROVIDE MANHOLES AT EACH END.

Revised	Drawn <i>Ldl</i>	Date 2/86	CITY OF CORONA PUBLIC WORKS DEPARTMENT
9/90	Approved	Date 3-28-86	
	<i>Joseph R. Palencia</i>		CATCH BASIN TYPE "B"
	Director of Public Works		
			STD. PLAN 202-0