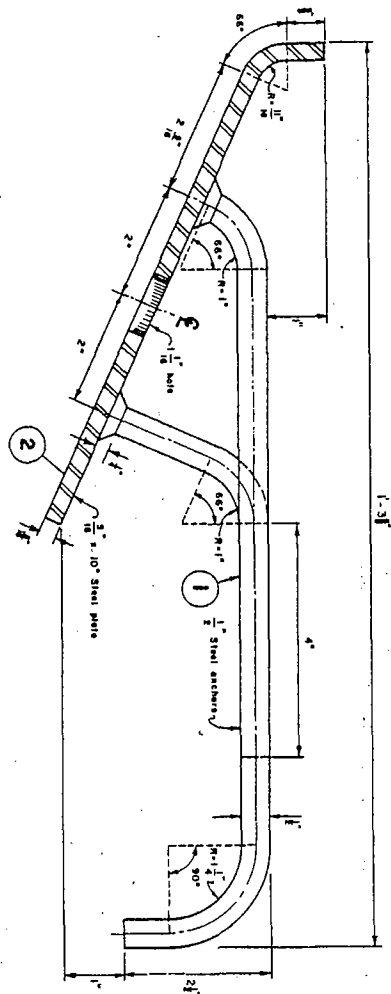
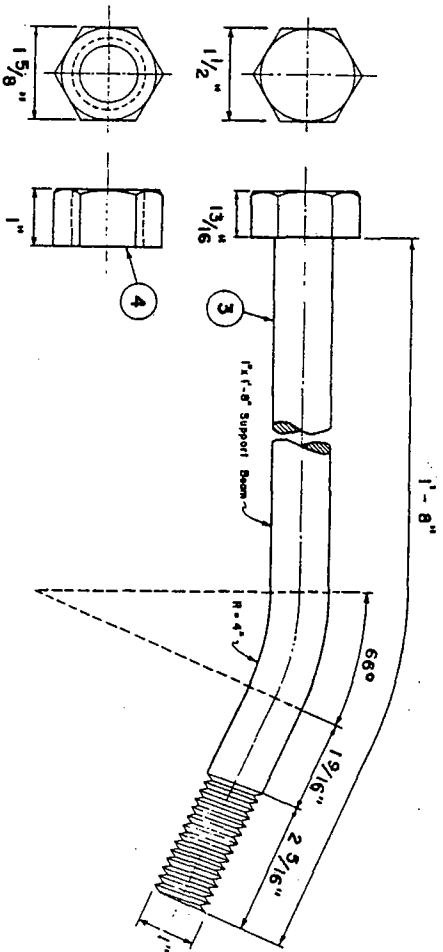


NOTES

1. THE STEEL ANCHORS SHALL BE FABRICATED FROM 1/2" DIAMETER MATERIAL AS SHOWN AND WELDED WITH 1/4" WELDS. ANCHORS SHALL BE INSTALLED AT EVEN INTERVALS NOT TO EXCEED 3'-6".
2. THE CURB SUPPORT PLATE SHALL BE FABRICATED FROM 5/16" X 10" STEEL PLATE AS SHOWN.
3. THE SUPPORT BOLT SHALL BE 1" DIAMETER AND HAVE A THREAD DEPTH OF 2 5/16". THE BOLT SHALL BE GALVANIZED AFTER THREADING. SUPPORT BOLTS SHALL BE SPACED AT EVEN INTERVALS NOT EXCEEDING 3'-6" CENTER TO CENTER.
4. TWO ADJUSTING NUTS SHALL BE SUPPLIED FOR EACH SUPPORT BOLT. ADJUSTING NUTS SHALL BE FREE FITTING AFTER GALVANIZING.
5. THE SUPPORT PLATES SHALL BE GALVANIZED AFTER FABRICATION.



Curb Support Plate & Anchors



Support Bolt & Hexagonal Adjusting Nuts

COUNTY OF SANTA BARBARA, CA. - DEPARTMENT OF PUBLIC WORKS - ROADS DIV.

Approved by

2-035

CURB SUPPORT PLATE

Charles Wagner 4/1/87
 DIRECTOR OF PUBLIC WORKS DATE