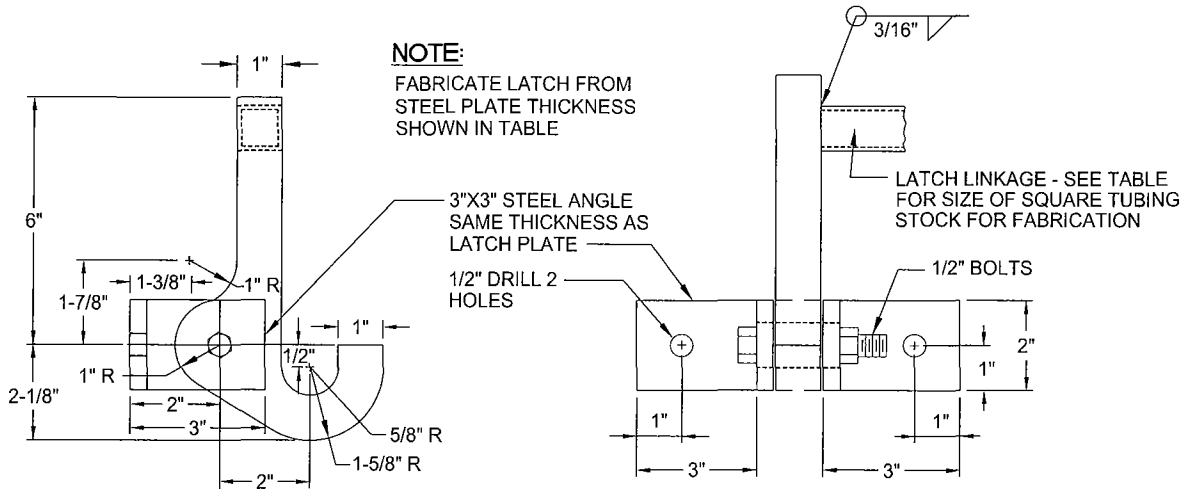
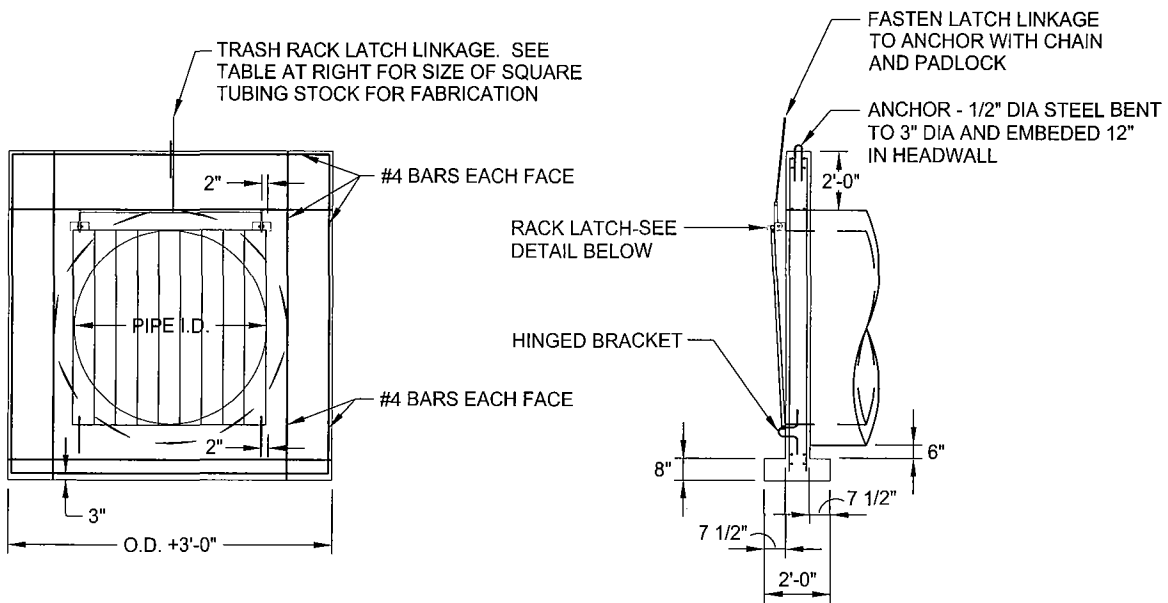


R:\Utilstods\City_Std_Details\Sewer_Drainage\S_300_PipeOutletAccessControlRack.DWG



NOTE:

1. ENTIRE RACK TO BE WELDED REINFORCING STEEL OR ROUND BARS OF EQUAL DIA.
2. USE CLASS "B" CONCRETE.
3. ROOM SHALL BE PROVIDED DOWNSTREAM TO LAY RACK FLAT
4. FASTEN LATCH BRACKET TO HEADWALL WITH 1/2" x 6" BOLTS WITH HEX NUTS, OR 1/2" EXPANSION BOLTS.
5. WHEN RACK IS IN THE CLOSED POSITION, THE BOTTOM RACK BAR SHALL BE TIGHT AGAINST THE TOP OF THE HINGE BRACKET SO THAT THE RACK CANNOT BE LIFTED OFF THE LATCH.
6. FABRICATE HINGE BRACKETS FROM #4 RE-BAR.
7. CHAMFER ALL EXPOSED EDGES OF CONCRETE.
8. ALL REINFORCING STEEL SHALL HAVE MIN. 2" COVER EXCEPT AS NOTED.

PIPE SIZE	RACK BAR SIZE	BAR SPACING	LATCH PLATE BAR SIZE	LATCH LINKAGE SIZE
21"	#4	4"	1/4"	1", .095" THICK
24"	"	4"	"	"
27"	#5	4"	"	"
30"	"	4"	3/8"	1", .133"
33"	#6	4"	"	"
36"	"	4"	"	"
42"	#7	4"	"	"
48"	"	6"	1/2"	"
54"	"	6"	"	"
60"	#8	6"	"	"
72"	"	6"	"	"
84"	"	6"	"	"

REV.	DATE	DESCRIPTION
△		
△		
△		