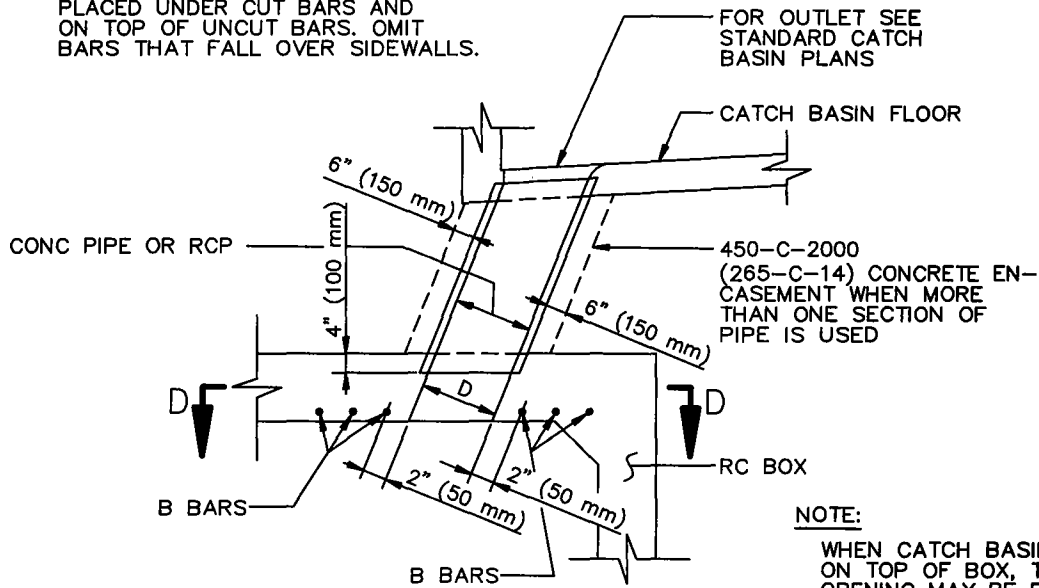
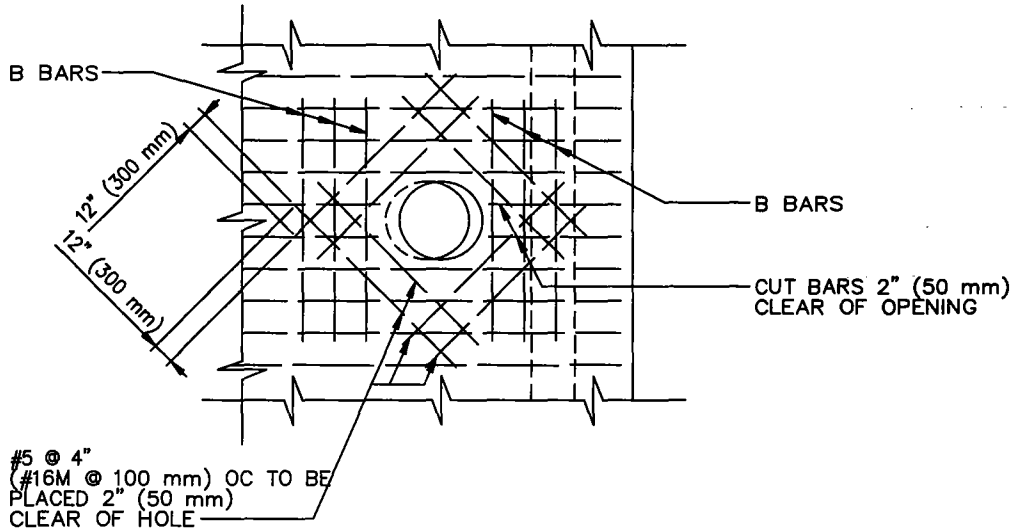


B BARS - #6 @ 4" (#19M @ 100 mm) OC,  
 LENGTH = D+3'-0" (1.0 m)  
 PLACED UNDER CUT BARS AND  
 ON TOP OF UNCUT BARS. OMIT  
 BARS THAT FALL OVER SIDEWALLS.



**NOTE:**  
 WHEN CATCH BASIN FALLS  
 ON TOP OF BOX, THE  
 OPENING MAY BE FORMED  
 THROUGH FLOOR OF CATCH  
 BASIN AND TOP SLAB OF BOX.

**CASE 3**  
**TOP SLAB ENTRANCE**  
 D = 30" (750 mm) MAX



**SECTION D-D**