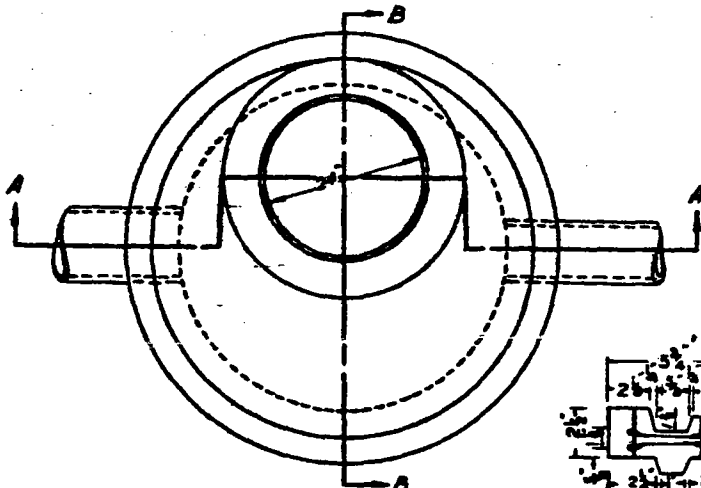
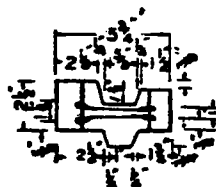


Section A-A

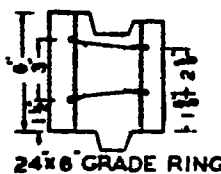
Section B-B



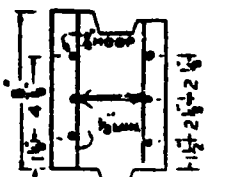
Plan



24x2" GRADE RING

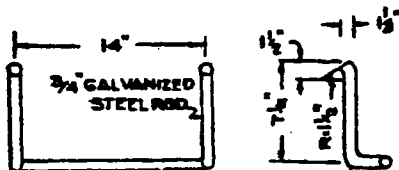


24x6" GRADE RING



24x8" GRADE RING

NO SCALE



DROP STEP

**Notes:**

Manhole Frame and Cover as per Pasadena Std. Dwg. S-302 to be concrete in place as shown after paving.

Depth of the Channel formed by the Concrete's Invert shall be  $\frac{3}{4}$  the diameter of the Sewer Pipe entering the Manhole.

Manhole Steps shall be  $\frac{3}{4}$  inch round Steel Bars galvanized after fabrication and heavily coated with asphaltic paint. Top Step shall be placed directly beneath the Manhole Cover Frame. Steps shall extend not more than 3 inches into Manhole in 24 inch diameter portion and all others shall extend 5 inches. The lowest Step shall be placed not less than 8 inches nor more than 24 inches above Shell.

All Joints shall be filled with Class C Cement Mortar per Std. Specifications and neatly painted or wiped inside Shell.

Concrete for all pre-cast units shall be compactly vibrated in the Forms. It shall be cured according to approved practice either by steam, sprinkling, membrane solution, or a combination of these. It shall develop 3250 P.S.I. or greater strength in 28 days.

Concrete base and stub walls shall be poured in one operation to a point 6" above the top of inlet pipes. All pipes shall be rigidly supported by temporary piers during this operation.

DESIGNED BY *R. J. ...*  
 DATE 6-25-66

<b>CITY OF PASADENA</b> OFFICE OF CITY ENGINEER & SUPERINTENDENT OF STREETS	
<b>PRE-CAST REINFORCED CONCRETE</b> <b>STANDARD MANHOLE</b> FOR 8 IN. TO 24 IN. DIAMETER SEWERS	
DESIGNED BY <i>R. J. ...</i>	DATE 6-25-66
APPROVED BY <i>[Signature]</i>	SCALE 3/4" = 1'-0"
ISSUED BY <i>[Signature]</i>	DESIGNED NUMBER <b>F-358</b>

Channel Inverts and Shelves shall be given a smooth finish free of sharp edges and abrupt changes in slope and may be placed separately from the base provided they are placed on a clean base using an epoxy or other suitable waterproof concrete bonding agent to prevent separation or spalling.