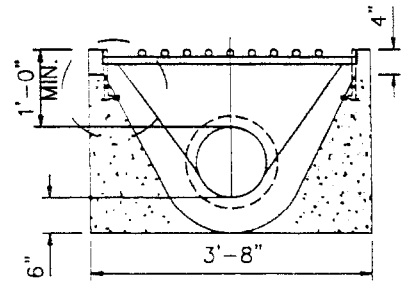
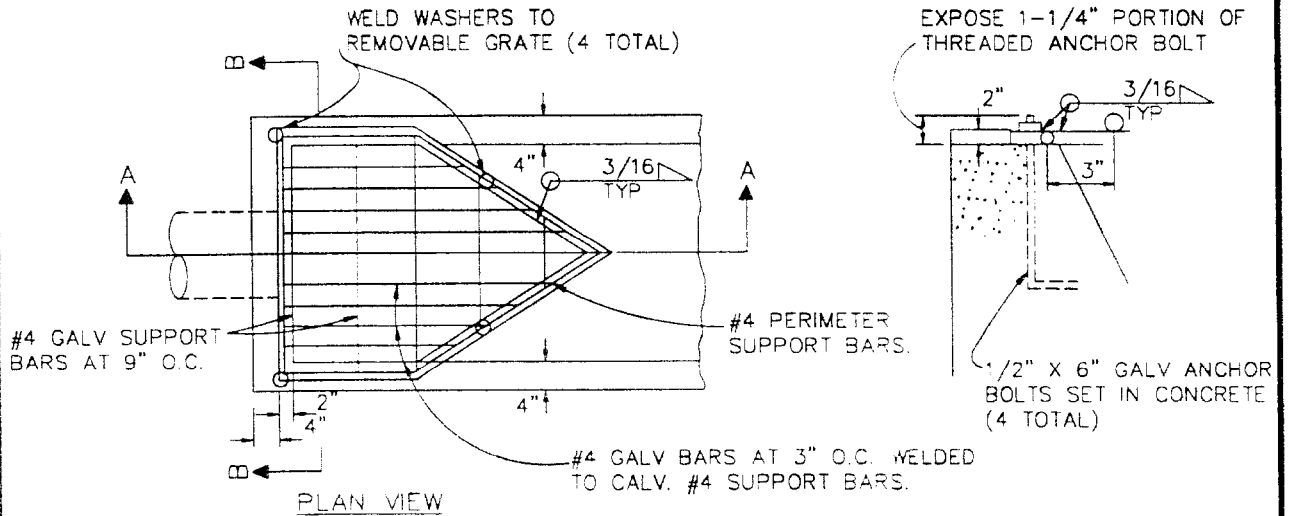


SECTION A-A



SECTION B-B



NOTES:

1. GROUND SHALL BE PRE-WETTED TO THE SATISFACTION OF THE CITY ENGINEER PRIOR TO PLACEMENT OF CONCRETE.
2. MATERIAL FOR CONSTRUCTION OF DOWNDRAIN SHALL BE CONCRETE REINFORCED WITH 6" x 6" W 1.4 x W 1.4 WELDED WIRE FABRIC.
3. DOWNDRAIN TO PIPE TRANSITION SHALL NOT BE USED WITHIN PUBLIC ROAD RIGHT-OF-WAY.
4. GRATE SHALL BE HOT DIP GALVANIZED AFTER FABRICATION.

CITY OF MURRIETA
DEPARTMENT OF DEVELOPMENT SERVICES

REVISIONS	
5/92	APPROVED

**DOWNDRAIN AND PIPE
TRANSITION**

STD. NO.

431