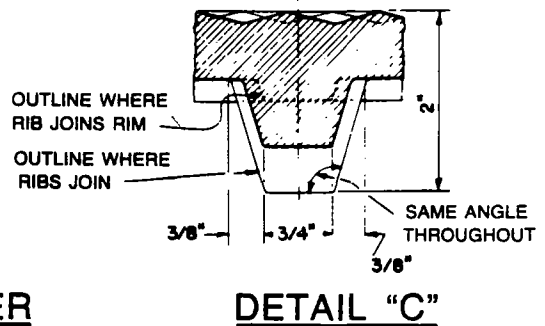
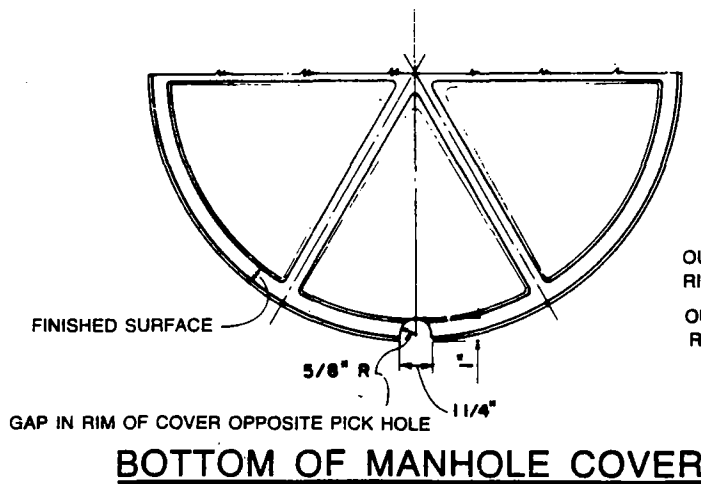
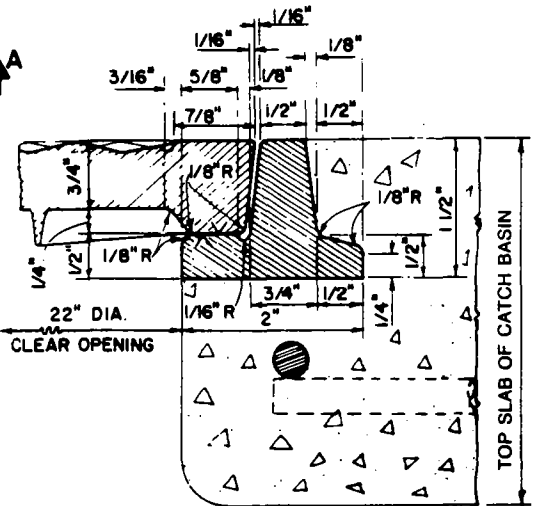
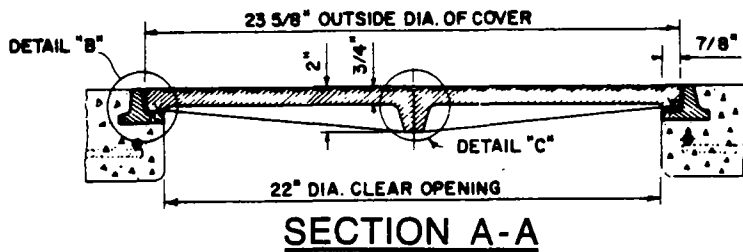
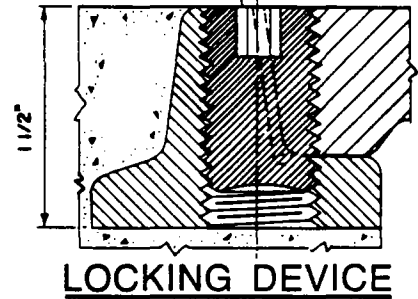


DRILL AND TAP HOLE AND INSTALL 3/4" X 1 1/4" STAINLESS STEEL SOCKET SET SCREW WITH 3/8" RECESSED HEX HOLE. ALL THREADS SHALL BE N.C.



REVISIONS		CITY OF LONG BEACH, CALIFORNIA DEPARTMENT OF PUBLIC WORKS	STANDARD PLAN NO.
NO.	DATE		
1		CATCH BASIN MANHOLE FRAME AND COVER	613
2			
3			
4			
APPROVED BY: <i>Edward J. Putsy</i>		DATE: 6-26-89	SHEET
CITY ENGINEER R.E. No. 24233		EX. DATE 12-31-89	1 OF 2

**NOTES:**

1. THE CAST IRON USED SHALL CONFORM WITH ASTM A-48 CLASS 35B.
2. THE FRAME AND COVER SHALL BE COATED WITH ASPHALTUM OR BITUMINOUS PAINT AFTER TESTING AND INSPECTION.
3. FOUNDRY IDENTIFYING MARK, HEAT AND DATE SHALL BE CAST ON THE BOTTOM OF THE COVER AND ON THE INSIDE OF THE FRAME.
4. IMPORTED COVERS AND FRAMES SHALL HAVE THE COUNTRY OF ORIGIN MARKING IN COMPLIANCE WITH FEDERAL REGULATIONS.
5. WEIGHT OF FRAME SHALL BE 30 POUNDS. WEIGHT OF COVER SHALL BE 85 POUNDS. ACTUAL WEIGHTS SHALL BE WITHIN A RANGE OF 95% TO 110%.
6. THE MANHOLE FRAME AND COVER SHALL BE INSPECTED BY THE ENGINEER PRIOR TO SHIPMENT TO THE JOB SITE. ACCEPTANCE WILL BE INDICATED BY THE AGENCY'S MARK.
7. THE PROOF-LOAD FOR TEST METHOD B OF THE STANDARD SPECIFICATIONS IS 28,600 POUNDS.

REVISIONS		CITY OF LONG BEACH, CALIFORNIA DEPARTMENT OF PUBLIC WORKS	STANDARD PLAN NO.
NO.	DATE		
1		CATCH BASIN MANHOLE FRAME AND COVER	613
2			
3			
4			
APPROVED BY: <u>Edward J. Pety</u>		DATE: <u>6-26-89</u>	SHEET
CITY ENGINEER R.E. No. <u>24233</u>		EX. DATE <u>12-31-89</u>	<u>2</u> OF <u>2</u>