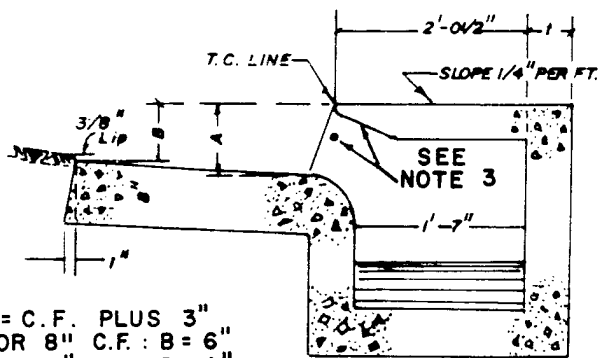
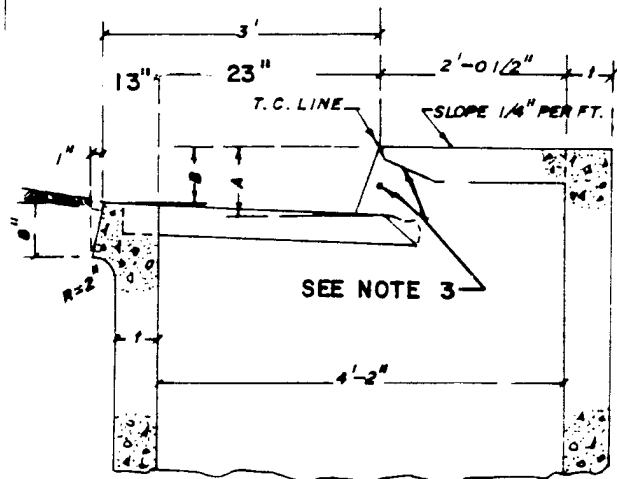


**PLAN - LOCAL DEPRESSION**



**SECTION C-C**

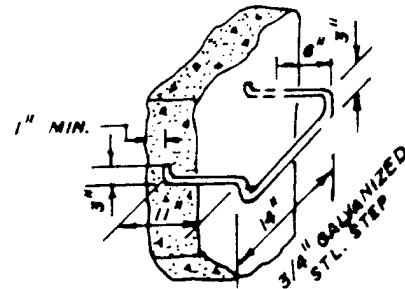


**SECTION G-G**

A = C.F. PLUS 3"  
 FOR 8" C.F. : B = 6"  
 FOR 6" C.F. : B = 4"

**NOTES :**

1. SEE STANDARD PLAN NO. 206-0 FOR WALL AND FLOOR REINFORCEMENT.
2. STEPS SHALL BE SPACED 12 INCHES APART. THE TOP STEP SHALL BE 7 INCHES BELOW THE TOP OF GRATE AND PROJECT 2 1/2". ALL OTHER STEPS SHALL PROJECT 5".
3. SEE STANDARD PLAN NO. 205-0 & 205-1 FOR DETAILS ON PROTECTION BAR AND FACE PLATE.



**STEP DETAIL**

Revised	Drawn	Date DEC. 88	<b>CITY OF CORONA PUBLIC WORKS DEPARTMENT</b>	
9/90	Approved	Date /-3-89		
10/90	<i>Joseph R. Palencia</i> Director of Public Works		CATCH BASIN TYPE "C"	STD. PLAN
			GRATE INLET - $\phi$ DETAILS	203-3