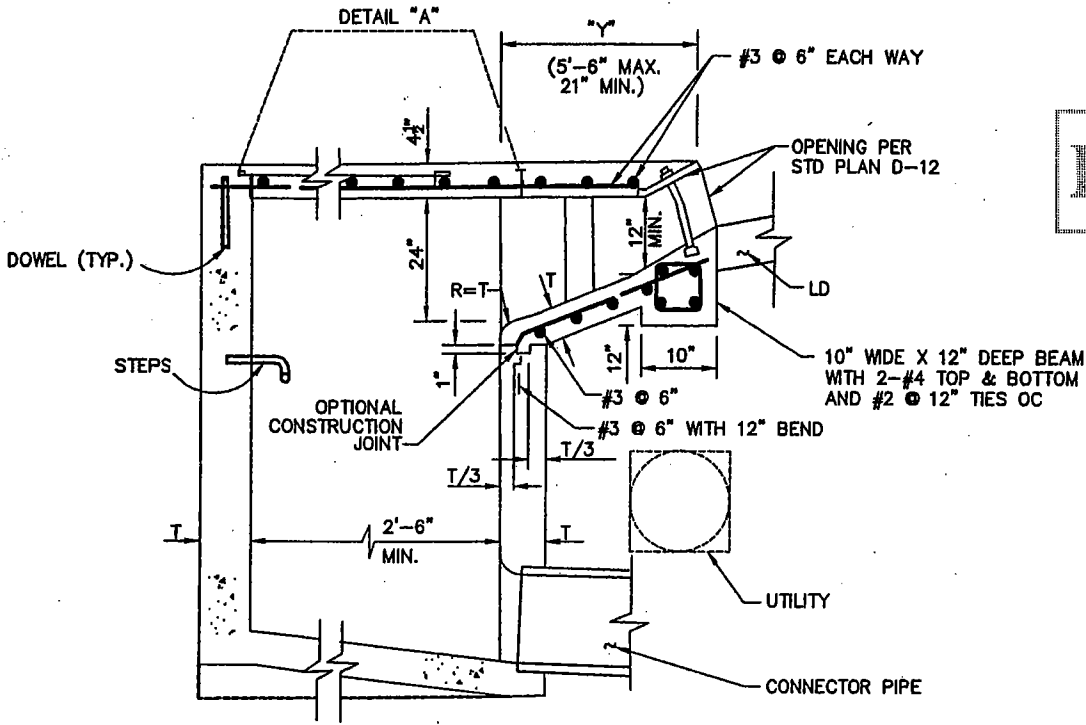
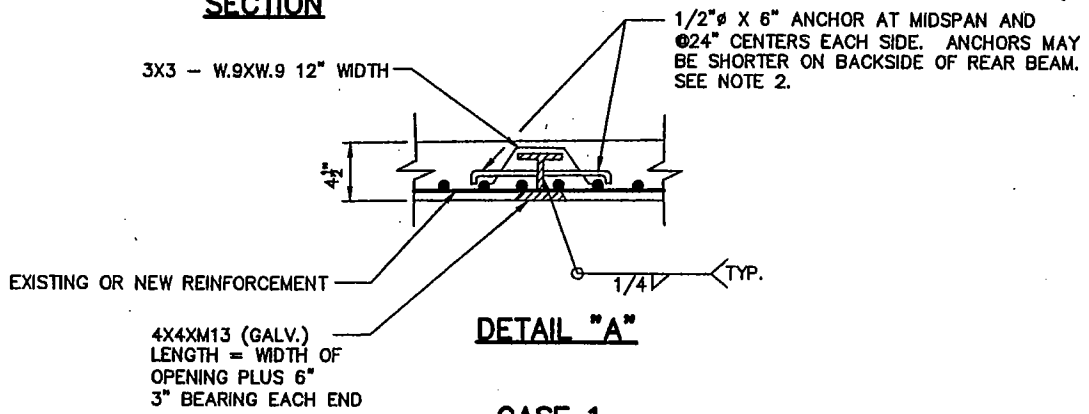


DRAFT



**SECTION**



**DETAIL "A"**

**CASE 1**

**CATCH BASIN MODIFICATION TO AVOID EXISTING UTILITY**

**NOTES:**

1. UTILITY LOCATION AND TYPE SHOWN ON PROJECT DRAWINGS.
2. ELECTRICAL WELDED STUDS 1/2"x8". NELSON H4F OR EQUAL MAY BE USED IN LIEU OF THE DEFORMED BAR ANCHORS. IF THE TOP SLABS OF THE CATCH BASIN AND THE CULVERT ARE NOT IN THE SAMPLE PLANE THE ANCHORS ON THE CULVERT SIDE SHALL BE OMITTED.
3. CONCRETE SHALL BE CLASS 560-C-3250 WITH A MAXIMUM SLUMP OF 5", FC'=3250 P.S.I. COMPRESSIVE STRENGTH AT 28 DAYS, UNLESS OTHERWISE NOTED ON THE CONTRACT PLANS, REINFORCING STEEL IF REQUIRED SHALL BE DEFORMED REBARS WITH Fy EXCEEDING 60,000 PSI, ASTM A615 AND ASTM A706, GRADE 60. PLACING OF REINFORCEMENT AND SPLICING LENGTHS SHALL CONFORM TO ACI CODES 318-13.
4. THE FOLLOWING STANDARD PLANS ARE INCORPORATED HEREIN:
  - D-10 MONOLITHIC CATCH BASIN CONNECTION
  - D-11 CATCH BASIN REINFORCEMENT
  - D-12 CATCH BASIN FACE PLATE ASSEMBLY AND PROTECTION BAR
  - D-14 CATCH BASIN MANHOLE FRAME AND COVER
  - D-16 STEEL STEP

**THE PORT OF LONG BEACH ENGINEERING DIVISION**

REVISIONS		MODIFICATIONS FOR CURB OPENING CATCH BASINS	STANDARD PLAN
NO.	DATE		D-9
△			
△			
△			
APPROVED BY: _____		R.E. NO.: _____	DATE: _____
		CHIEF HARBOR ENGINEER	1 OF 3