

NOTES

1. MANHOLE FRAME AND COVER PER STANDARD DETAIL 2-100. MAY BE ALHAMBRA FOUNDRY COMPANY A-1530 OR AN APPROVED EQUAL.
2. THE LENGTH SHALL BE A MAXIMUM OF 4' . SPECIAL DESIGNS WILL BE REQUIRED FOR LENGTH GREATER THAN 4' .
3. THE SPAN SHALL BE MINIMUM OF 3' AND SHALL NOT EXCEED 6' .
4. TOP SLAB REINFORCING SHALL BE #5 BARS AT 12" MAXIMUM SPACING AS SHOWN.
5. OUTLET PIPE SHALL BE PLACED AT THE MIDPOINT OF THE WALL.
6. A 3" OD GALVANIZED STEEL PIPE 1-1/2" PLUS OPENING HEIGHT SHALL BE PROVIDED. SUPPORT POST SHALL BE NOTCHED AND REINFORCING STEEL SHALL BE PLACED IN THE NOTCH AND WELDED AS SHOWN. THIS 3" PIPE IS REQUIRED IN DROP INLETS WITH ONE WINDOW OR IN DROP INLETS WITH WINDOWS IN THE OPPOSITE WALLS.
7. THE TOP SLAB SHALL BE A MINIMUM OF 6" THICK AND THE BOTTOM SLAB SHALL BE 8" THICK IN ALL LOCATIONS.
8. ADDITIONAL WINDOWS MAY BE CONSTRUCTED IN OTHER WALL LOCATIONS TO FIT FIELD CONDITIONS. GRATE TOP INLETS SHALL BE APPROVED BY THE DIRECTOR OF PUBLIC WORKS, PRIOR TO THE CONSTRUCTION.

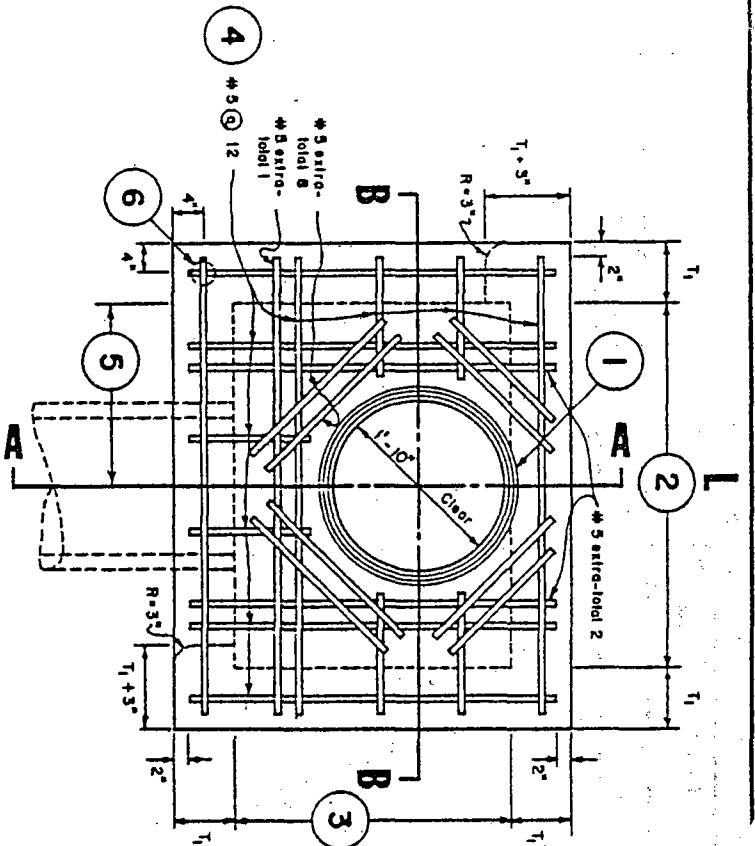
COUNTY OF SANTA BARBARA, CA. - DEPARTMENT OF PUBLIC WORKS - ROADS DIV.

Approved by

2-055

TYPE C DROP INLET

Charles W. Wagner 4/1/87
DIRECTOR OF PUBLIC WORKS DATE



Plan View

Table A

HEIGHT OF DI	CONCRETE		REINFORCING	
	T ₁	T ₂	BOTTOM	SIDES
Less than 4'-0"	6"	8"	#4 at 18"	#4 at 18"
4'-0" to 8'-0"	6"	8"	#4 at 18"	#4 at 18"
Greater than 8'-0"	8"	8"	#4 at 12"	#4 at 12"

9. BAR REINFORCING STEEL SHALL BE 2" CLEAR OF SIDES, TOP AND BOTTOM SLABS. STEEL SHALL BE 2" CLEAR FROM THE BOTTOM OF THE TOP AND BOTTOM SLABS.
10. ALL CONCRETE SHALL BE CLASS A OR CLASS B.