

PRODUCT NUMBER

CA24SRETGR01

CATALOG NUMBER

RET GRATE

LOAD RATING

H20

COATING

GALVANIZED

ESTIMATED WEIGHT

GRATE: LBS

MATERIAL SPECIFICATION

GRATE - STEEL
SEE NOTES

OPEN AREA

N/A

✓ DESIGNATES MACHINE SURFACE

DRAWN
AWM

DATE
10/31/08

LAST REVISED

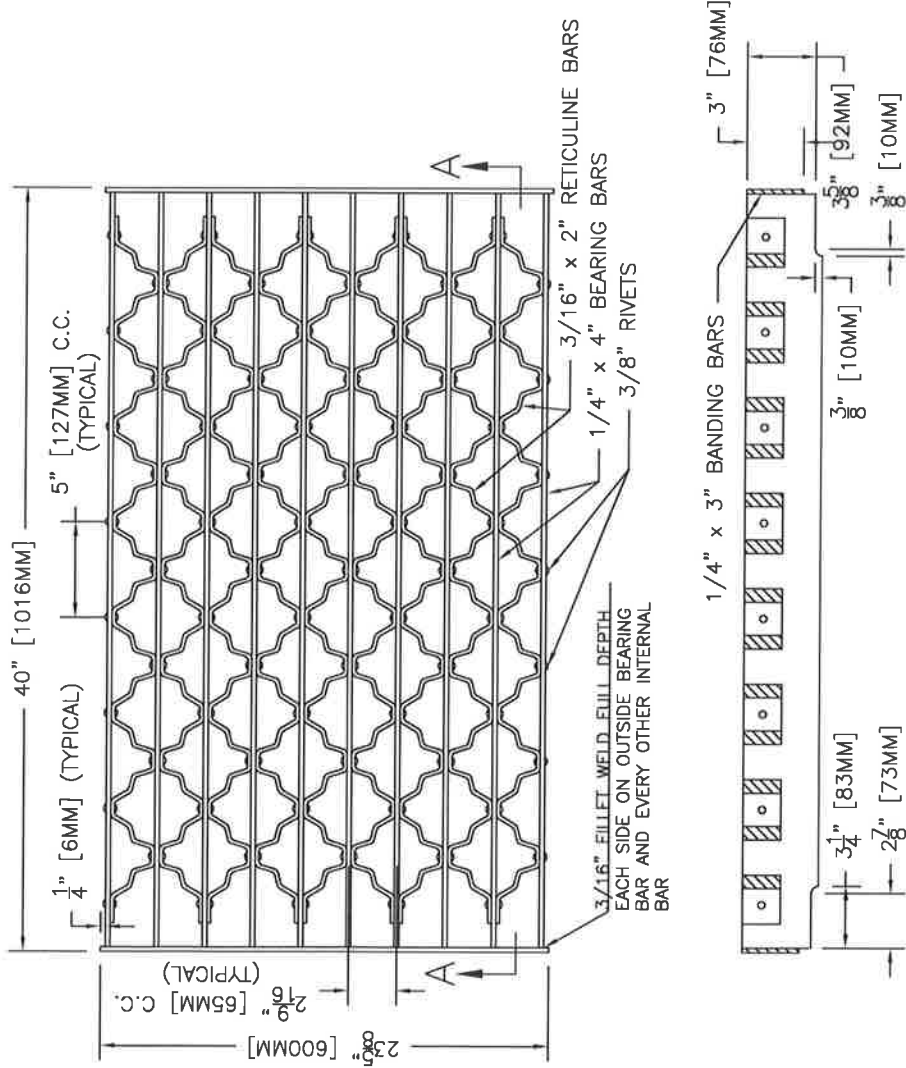
DATE

REFERENCE INFORMATION

00XXXXXX

NOTES:

- MATERIAL FOR BEARING BARS AND BANDING BARS SHALL CONFORM TO A.S.T.M. A36.
- RETICULINE BARS SHALL BE HOT ROLLED, PICKLED, AND OILED STEEL, GRADE 1008/1010.
- GRATES SHALL BE HOT-DIP GALVANIZED PER A.S.T.M. A123 AFTER FABRICATION.
- GRATES ARE DESIGNED FOR 16 KIP WHEEL LOAD (H-20).



PRODUCT NUMBER
TYPE 24
FRAME
 WITH HEADED
 STUD

LOAD RATING

SPECIFICATIONS
MATERIAL : ASTM A36
COATING : ASTM A123
 (GALVANIZING)
 : MILL FINISH
 (UNCOATED)

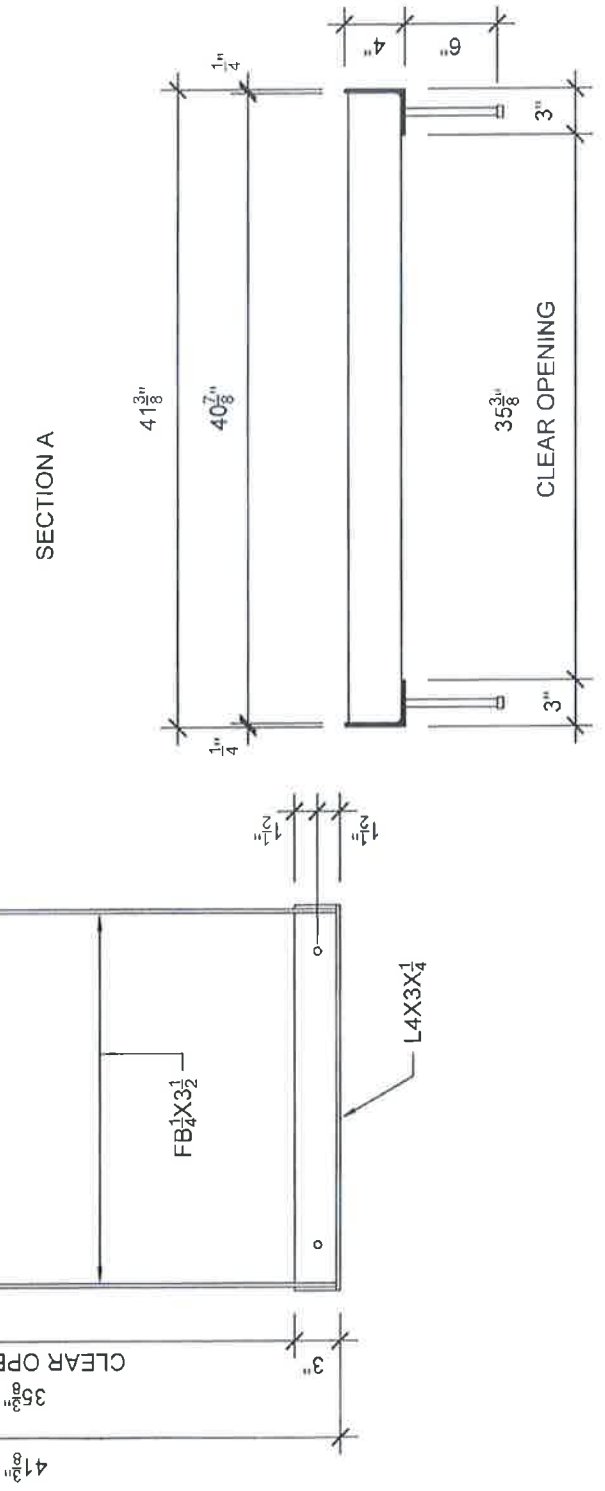
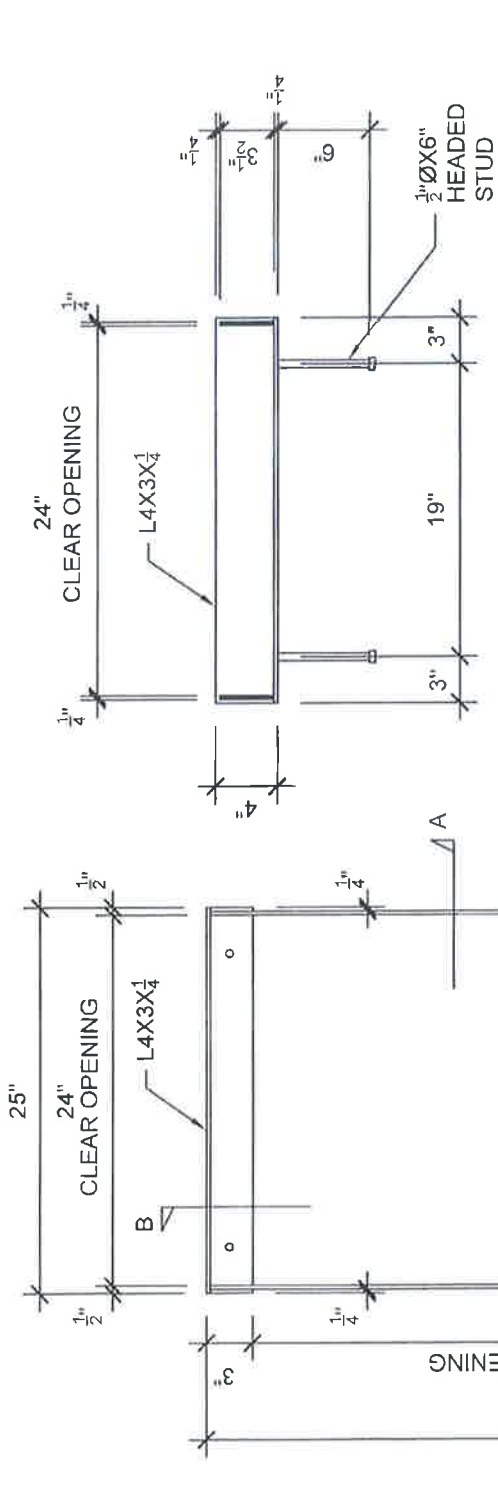
MADE IN USA

EST. WEIGHT
 47 LBS (21 KG)

STANDARD PLAN REFERENCE
 *CALTRANS D77A

DRAWN	DATE
EB	03-27-09
REVISED	DATE
05-18-11	

REFERENCE INFORMATION
 LBIW CATALOG
 SECTION 07



TYPE 24 FRAME DETAILS
 (For all Rectangular Grates)