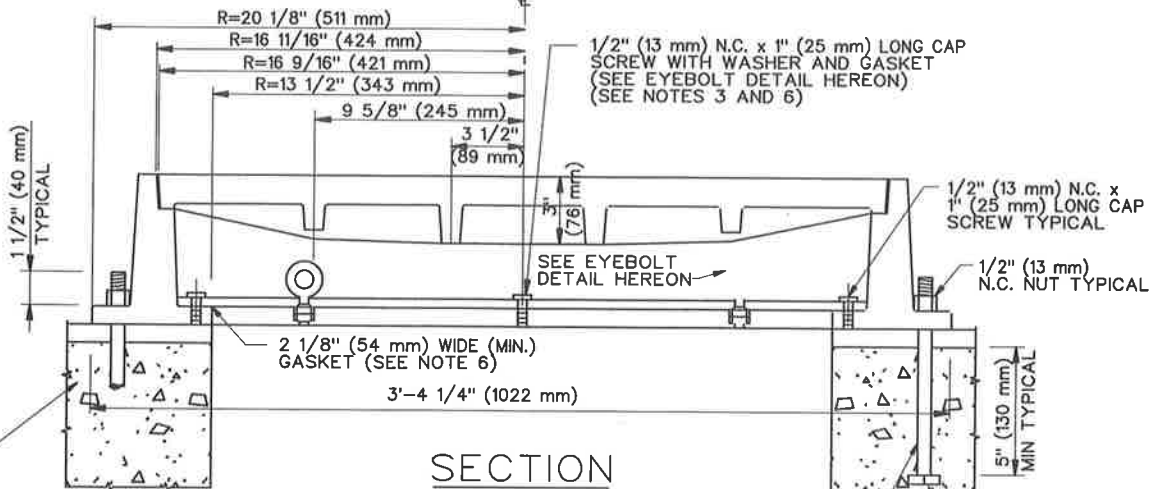


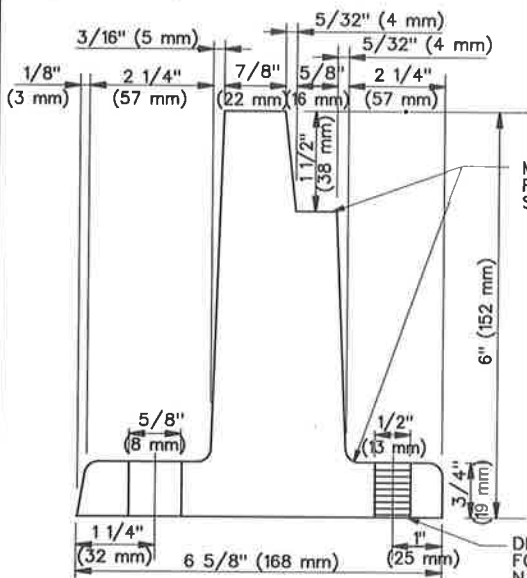
SYMMETRICAL ABOUT C



SECTION
MANHOLE FRAME AND COVER

MANHOLE WALL (CONCRETE, MORTAR, OR OTHER MATERIAL) (SEE NOTE 8)

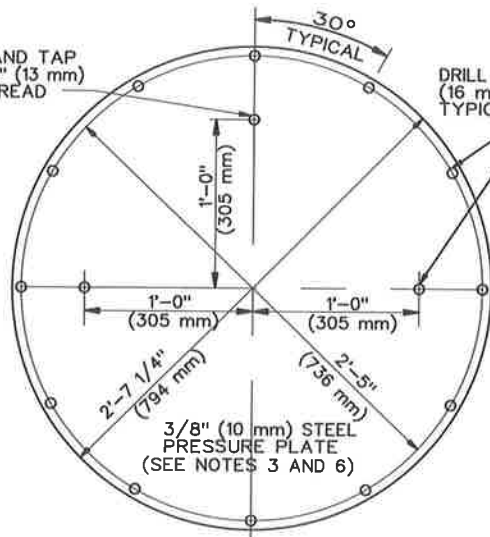
1/2" (13 mm) ANCHOR, 8" (200 mm) LONG TYPICAL



DETAIL OF FRAME

DRILL AND TAP FOR 1/2" (13 mm) N.C. THREAD

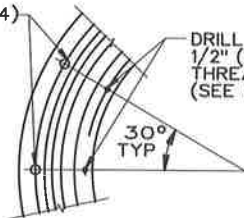
DRILL 5/8" (16 mm) HOLES TYPICAL



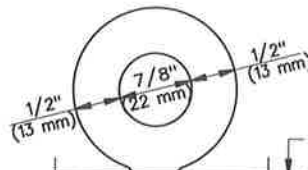
PRESSURE PLATE

5/8" (16 mm) HOLES TYPICAL (SEE NOTE 4)

DRILL AND TAP FOR 1/2" (13 mm) N.C. THREADS TYPICAL (SEE NOTE 4)



DETAIL OF BOLT HOLE SPACING IN FRAME



2" (51 mm) DIA GASKET (SEE NOTE 6)

3/8" (10 mm) STEEL PRESSURE PLATE (SEE NOTES 3 AND 6)

1/2" (13 mm) DIA WASHER
1/2" (13 mm) N.C. NUT TYPICAL

1/4" (6 mm) MINIMUM

EYEBOLT DETAIL
(2 REQUIRED)

STANDARD PLANS FOR PUBLIC WORKS CONSTRUCTION

PROMULGATED BY THE
PUBLIC WORKS STANDARDS INC.
GREENBOOK COMMITTEE
1984
REV. 1998, 2009, 2021

MANHOLE FRAME AND COVER -
PRESSURE TYPE

USE WITH STANDARD SPECIFICATIONS FOR PUBLIC WORKS CONSTRUCTION

STANDARD PLAN

211-3

SHEET 1 OF 2

NOTES:

1. EXCEPT AS OTHERWISE INDICATED, THE MANHOLE FRAME AND COVER SHALL CONFORM TO SPPWC 632, 30" (762 mm) MANHOLE FRAME AND COVER.
2. THE PRESSURE PLATE SHALL BE STEEL CONFORMING TO ASTM A36 (A36M), AND SHALL BE GALVANIZED AFTER FABRICATION, BUT BEFORE INSTALLATION OF SCREWS AND BOLTS.
3. CAP SCREWS AND EYEBOLTS, INCLUDING WASHERS AND NUTS ATTACHED THERETO, SHALL BE FABRICATED FROM ANY SERIES 300 STAINLESS STEEL.
4. ALL HOLES IN CAST IRON SHALL BE DRILLED AFTER CASTING, OR PLUGGED PRIOR TO CASTING. THEY SHALL NOT BE PUNCHED.
5. IRON CASTINGS SHALL RECEIVE AN ASPHALTIC COATING AFTER FABRICATION.
6. GASKET MATERIAL SHALL BE 1/16" (2 mm) THICK NEOPRENE RUBBER. PRESSURE PLATE GASKET SHALL BE 2'-7 1/4" (794 mm) O.D.
7. ALL NUTS AND BOLTS SHALL BE TIGHTENED TO A MINIMUM TORQUE OF 25 FOOT-POUNDS (34 Nm).
8. FRAME SHALL BE SET ON 1/2" (12.5 mm) THICK MINIMUM WET MORTAR BASE, CLASS "B" MORTAR.
9. MANHOLE FRAME AND COVER AND PRESSURE PLATE ASSEMBLIES SHALL BE FIT-TESTED PRIOR TO SHIPMENT TO THE WORK SITE AND MARKED IN SETS.

STANDARD PLANS FOR PUBLIC WORKS CONSTRUCTION

STANDARD PLAN

MANHOLE FRAME AND COVER – PRESSURE TYPE

211-3

SHEET 2 OF 2