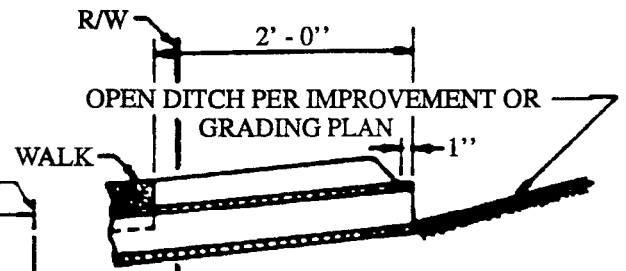
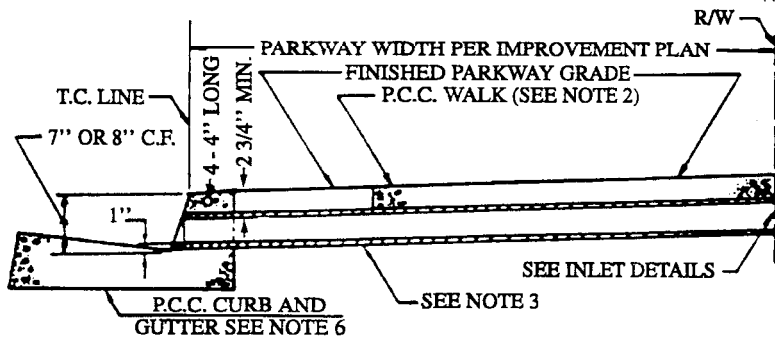


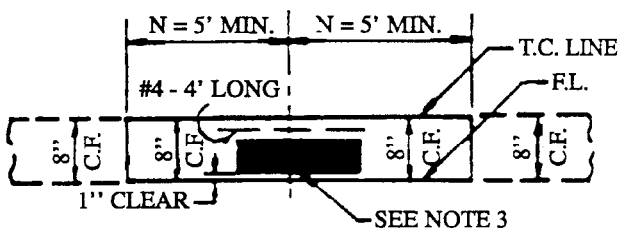
CASE I INLET
DROP INLET CATCH BASIN SECTION



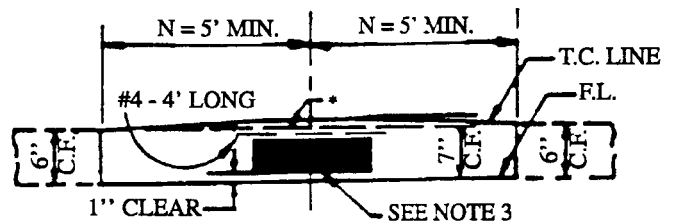
CASE II INLET
GRADED DITCH SECTION



SECTION A-A



CURB PROFILE
8" NORMAL CURB FACE



CURB PROFILE
6" NORMAL CURB FACE

SEE SHEET 2 FOR NOTES

City of San Juan Capistrano

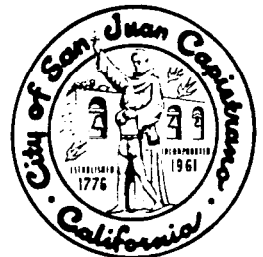


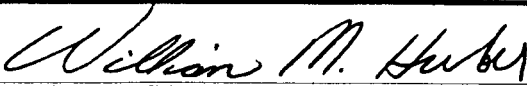
REVISIONS	PARKWAY DRAIN NO.2	STANDARD PLAN NO.
		352
<p><i>William M. Huber</i> 7/20/95 APPROVED BY CITY ENGINEER, WILLIAM M. HUBER R.C.E. 31785 DATE</p>		SHT 1 OF 2

NOTES:

1. TOP OF INLET STRUCTURE (CASE 1) TO BE FLUSH WITH ADJACENT SURFACE.
2. CONSTRUCT P.C.C. WALK AND CURB AND GUTTER AS SPECIFIED ON PLAN. MINIMUM REPLACEMENT OF WALK AND CURB AND GUTTER SHALL BE FROM JOINT TO JOINT OR AS DIRECTED BY THE CITY ENGINEER. SEE STD. PLAN NO. 330 OR 331. THE CONTRACT PRICE PAID FOR P.C.C. WALK ITEM SHALL INCLUDE WALK CONSTRUCTED IN CONJUNCTION WITH PARKWAY CULVERT.
3. ONE CIRCULAR PIPE SHALL BE PLACED AT A LOCATION OTHERWISE THE PIPE SHALL BE ALHAMBRA FOUNDRY A470 OR EQUAL WITH THE SIZE AS SPECIFIED ON PLAN. FOR SIZES OTHER THAN 3" x 5, 9, 12" N SHALL BE 10' AND C.F. OVER PIPE SHALL BE INCREASED 1" FOR 1".
4. INLET CASE TO BE SPECIFIED ON IMPROVEMENT OR GRADING PLAN.
5. ANGLE "Q" EQUALS 0° UNLESS OTHERWISE SPECIFIED.
6. TYPE, DIMENSIONS, AND ELEVATIONS OF P.C.C. CURB AND GUTTER PER IMPROVEMENT PLAN.
7. UNLESS OTHERWISE SPECIFIED, FRAME AND GRATE FOR INLET CASE I SHALL BE ALHAMBRA FOUNDRY 14" x 14" TYPE A - 22422 (GALVANIZED) OR EQUAL, PLACED LEVEL.
8. CONCRETE SHALL BE CLASS 520 - C - 2500 PER STANDARD SPECIFICATIONS SECTION 201-1.1.2.

City of San Juan Capistrano



REVISIONS	PARKWAY DRAIN NO. 2	STANDARD PLAN NO.
		352
	 APPROVED BY CITY ENGINEER, WILLIAM M. HUBER R.C.E. 31785	
	7/20/95 DATE	SHT 2 OF 2