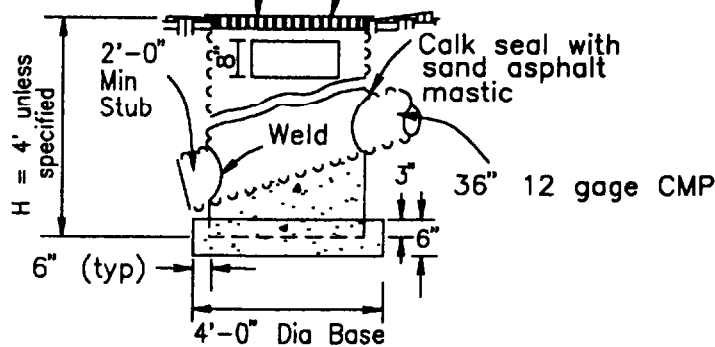


One or more wall openings can be used. Location and number as approve by the City Engineer.

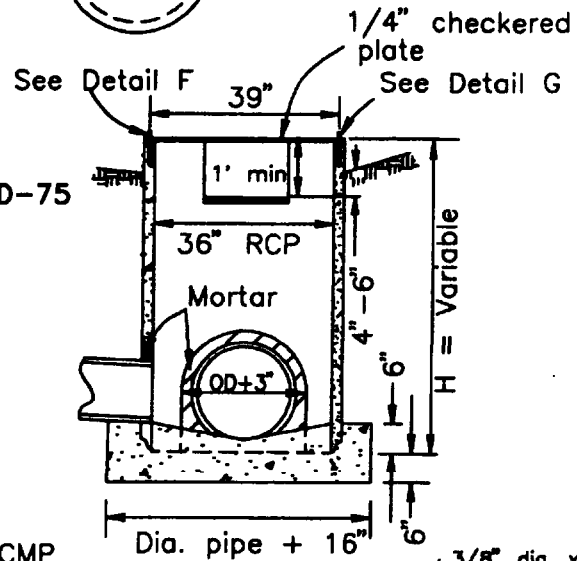
Punch 1" hole in CMP.  
Place pipe so bars of grate will be parallel with main surface flow

Note: All welding to conform to State Std. D-75

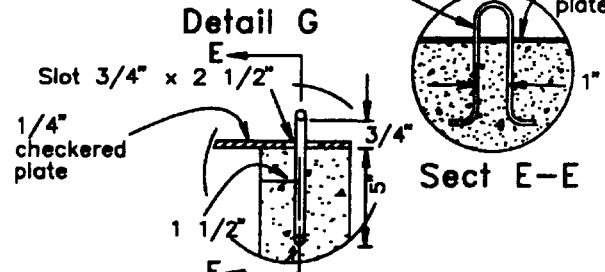
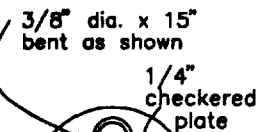
3" x 1/2" bars  
3/4" x 1/2" Lug welded to grate  
Type 36R Grate



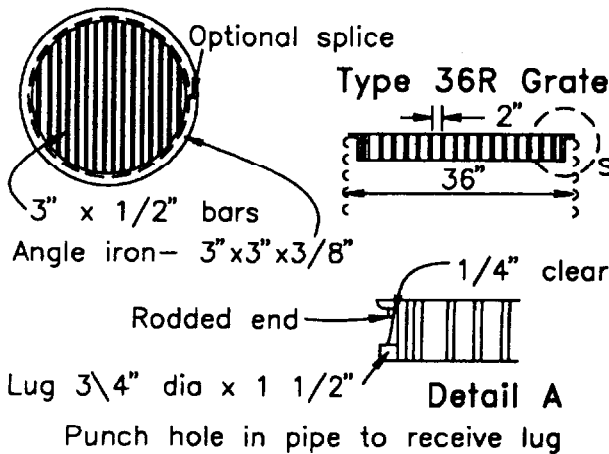
Section A - A



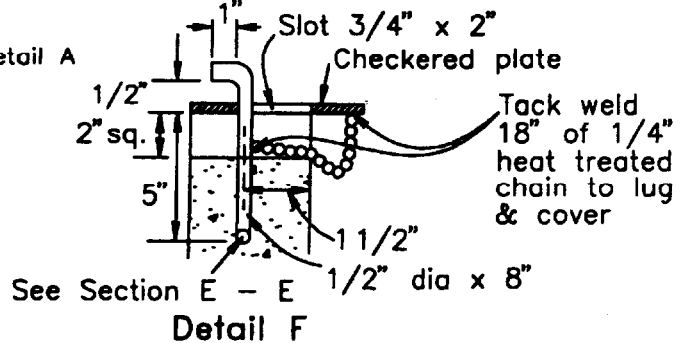
Section B-B



Sect E-E



Detail A



Approved:

*Am 29 JUNE 07*  
Director of Public Works/  
Designer

*AA 29 June 07*  
R. James Faring, RCE 26993  
City Engineer



City of Grover Beach

Offstreet Drop Inlet &  
Junction Box

D.10