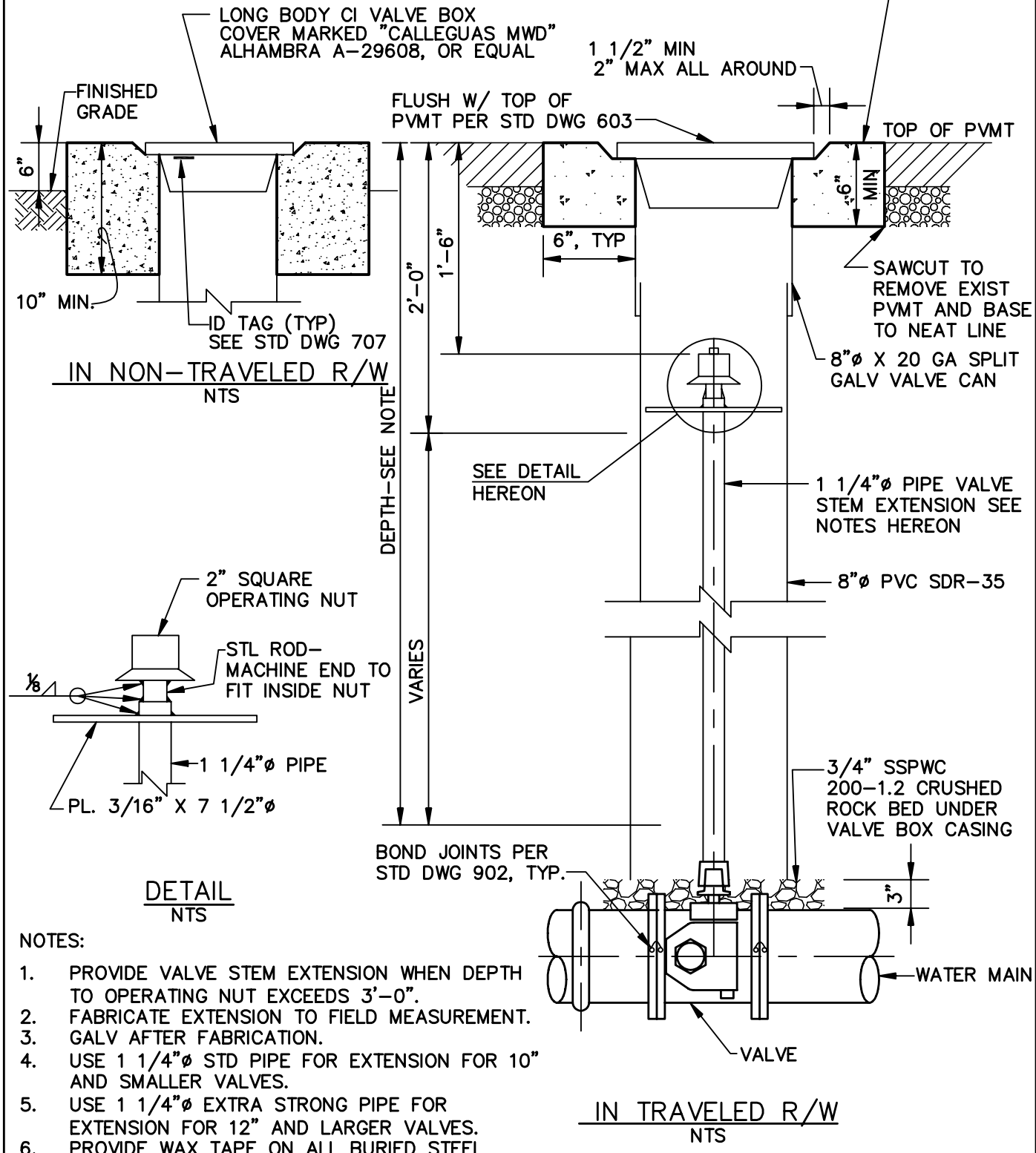


ADD 2 LBS OF CALCIUM CHLORIDE TO EACH SACK OF CEMENT. TROWEL LAMP BLACK INTO SURFACE OF CONC TO MATCH COLOR OF ADJACENT PVMT



LONG BODY CI VALVE BOX COVER MARKED "CALLEGUAS MWD" ALHAMBRA A-29608, OR EQUAL

1 1/2" MIN  
2" MAX ALL AROUND

FLUSH W/ TOP OF PVMT PER STD DWG 603

TOP OF PVMT

FINISHED GRADE

6"

10" MIN.

ID TAG (TYP) SEE STD DWG 707

IN NON-TRAVELED R/W NTS

DEPTH-SEE NOTE

SEE DETAIL HEREON

SAWCUT TO REMOVE EXIST PVMT AND BASE TO NEAT LINE  
8"Ø X 20 GA SPLIT GALV VALVE CAN

1 1/4"Ø PIPE VALVE STEM EXTENSION SEE NOTES HEREON

8"Ø PVC SDR-35

2" SQUARE OPERATING NUT

STL ROD-MACHINE END TO FIT INSIDE NUT

1/8"

1 1/4"Ø PIPE

PL. 3/16" X 7 1/2"Ø

VARIES

BOND JOINTS PER STD DWG 902, TYP.

3/4" SSPWC 200-1.2 CRUSHED ROCK BED UNDER VALVE BOX CASING

3"

WATER MAIN

VALVE

IN TRAVELED R/W NTS

DETAIL NTS

NOTES:

1. PROVIDE VALVE STEM EXTENSION WHEN DEPTH TO OPERATING NUT EXCEEDS 3'-0".
2. FABRICATE EXTENSION TO FIELD MEASUREMENT.
3. GALV AFTER FABRICATION.
4. USE 1 1/4"Ø STD PIPE FOR EXTENSION FOR 10" AND SMALLER VALVES.
5. USE 1 1/4"Ø EXTRA STRONG PIPE FOR EXTENSION FOR 12" AND LARGER VALVES.
6. PROVIDE WAX TAPE ON ALL BURIED STEEL UNLESS CEMENT MORTAR COATED PER SPECIFICATIONS (AWWA C217 IF NOT SPECIFIED).

REVISION	DATE	BY	DESCRIPTION
2	03/02	P&d	GENERAL
3	11/04	P&d	GENERAL
4	03/06	P&d	GENERAL

CALLEGUAS MUNICIPAL WATER DISTRICT

STANDARD DRAWINGS

DWG NO

VALVE BOX AND COVER

602

APPROVED

MANAGER OF ENGINEERING

DATE

THOUSAND OAKS

CALIFORNIA