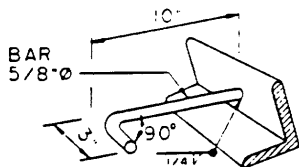
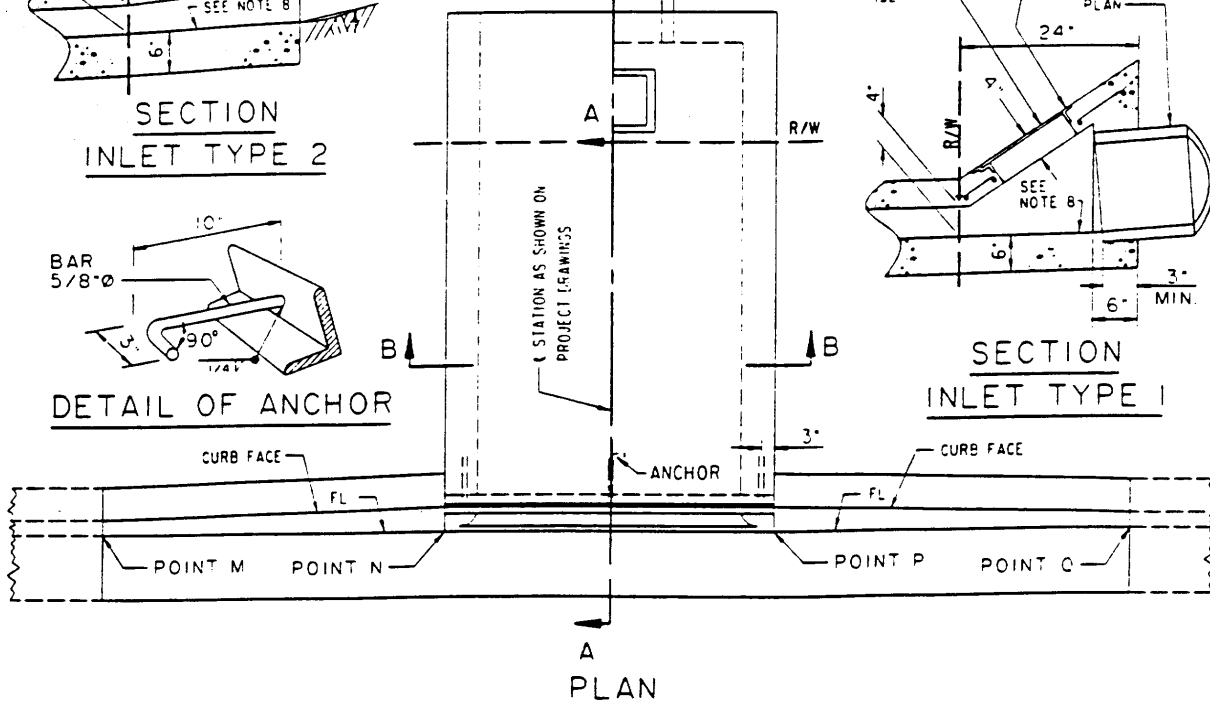


SECTION  
INLET TYPE 2

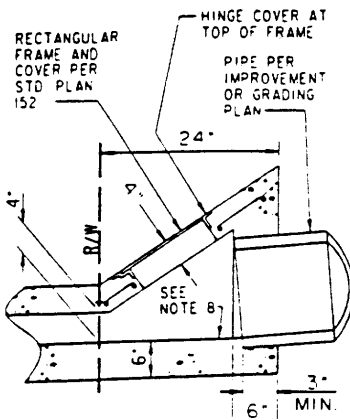


DETAIL OF ANCHOR

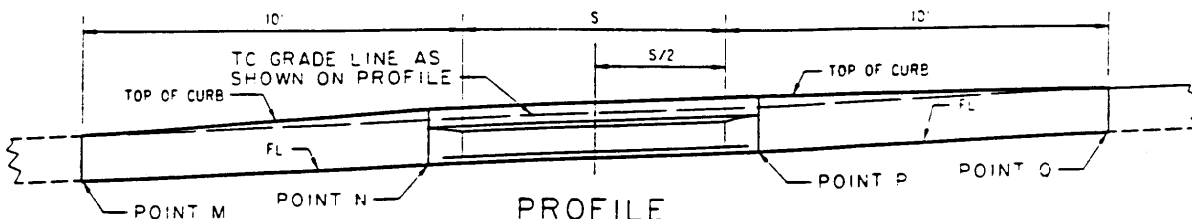
INLET TYPE 2      INLET TYPE 1



PLAN

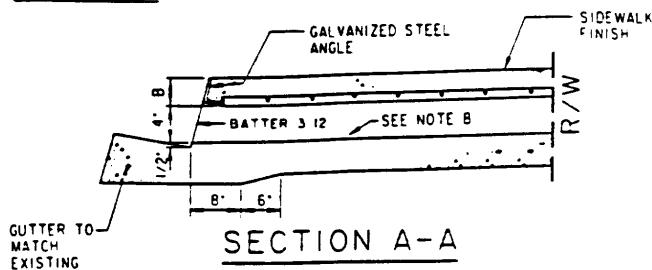


SECTION  
INLET TYPE 1

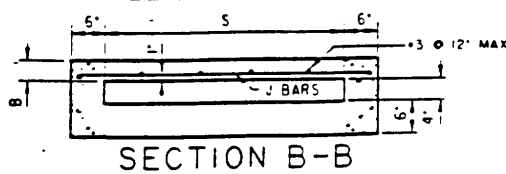


PROFILE

S	B	GALVANIZED STEEL ANGLE	ANCHOR	J BAR	
				SIZE	SPACING
12'	3'	2 1/2"x2"x3/8"	2	#3	7"
18'	3'	2 1/2"x2"x3/8"	2	#3	7"
24'	3'	2 1/2"x2"x3/8"	2	#3	7"
2'-6"	3'	2 1/2"x2"x3/8"	2	#3	7"
3'-0"	3'	2 1/2"x2"x3/8"	3	#3	7"
3'-6"	3'	2 1/2"x2"x3/8"	3	#3	6"
4'-0"	3'	2 1/2"x2"x3/8"	3	#3	5"
4'-6"	4'	3 1/2"x3"x1/2"	3	#3	6 1/2"
5'-0"	4'	3 1/2"x3"x1/2"	3	#3	5"
5'-6"	4'	3 1/2"x3"x1/2"	3	#3	4"
6'-0"	4'	3 1/2"x3"x1/2"	3	#3	3 1/2"



SECTION A-A



SECTION B-B

REF: AMERICAN PUBLIC WORKS ASSOCIATION - SOUTHERN CALIFORNIA CHAPTER

DRAWN NJG CHECKED NSH APPR. <i>[Signature]</i> DEPT. PUBLIC WORKS	<b>PARKWAY DRAIN</b> USE WITH STANDARD SPECIFICATIONS FOR PUBLIC WORKS CONSTRUCTION	DATE 4/13/94 SCALE NONE 1993 STD-215
--	--	---

NOTES

1. FLOOR OF BOX TO BE TROWELED SMOOTH.
2. IF THE TOE OF SLOPE IS ALLOWED WITHIN THE R/W. INLET TYPE 1 BEGINS AT THE TOE RATHER THAN THE R/W LINE.
3. FOR OPEN DITCH (TYPE 2). THE 2' EXTENSION BEYOND THE R/W LINE IS NOT REQUIRED WHEN BACK OF WALK IS 2' OR MORE FROM THE R/W LINE; HOWEVER, PIPE SHALL EXTEND TO R/W LINE IN ANY EVENT.
4. TOP OF INLET STRUCTURE (TYPE 1 & 2) TO BE FLUSH WITH ADJACENT SURFACE WHERE PRACTICAL.
5. A HEADED STEEL STUD 5/8"x6 3/8" WITH 1" HEADS ATTACHED BY A FULL PENETRATION BUTT WELD MAY BE USED AS AN ALTERNATE ANCHOR.
6. NORMAL CURB FACE AT POINT M AND O. B+5" AT POINT N AND P.
7. THE 3" LEG OF THE BAR 5/8"Ø ANCHORS SHALL BE PARALLEL TO THE TOP OF SIDEWALK.
8. SLOPE = 1/4" PER FOOT.

AMERICAN PUBLIC WORKS ASSOCIATION - SOUTHERN CALIFORNIA CHAPTER

DRAWN NJG		<b>PARKWAY DRAIN</b>	DATE 4/13/94
CHECKED NSH			SCALE NONE
APPR. <i>NJG</i>			1993
DEPT. PUBLIC WORKS	CITY OF BUENA PARK	STD-215	2 OF 2